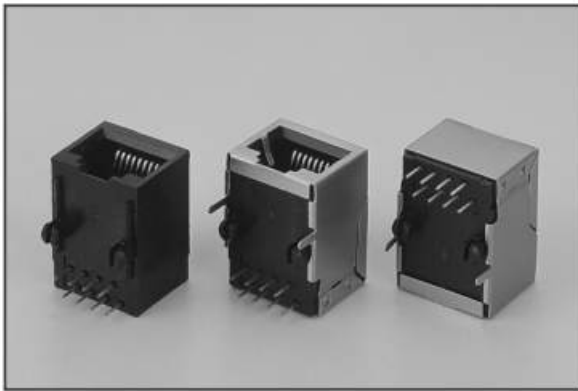


SIDE ENTRY PCB JACK

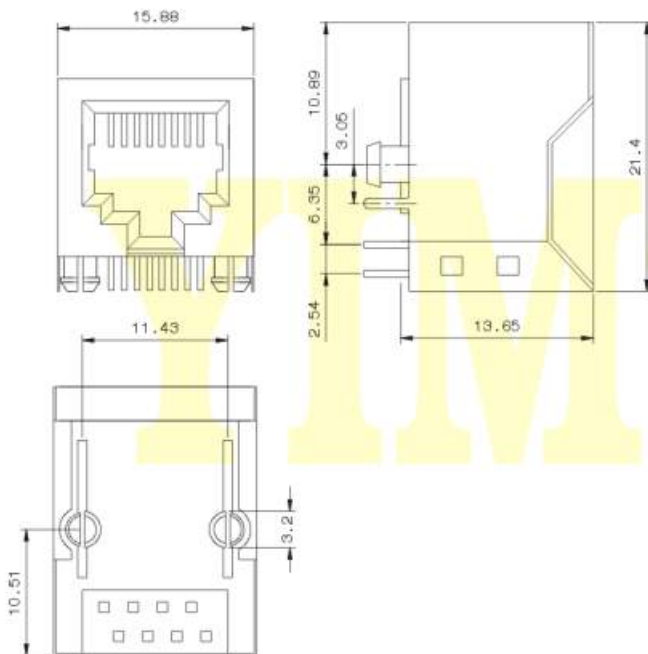
YIMTEX .



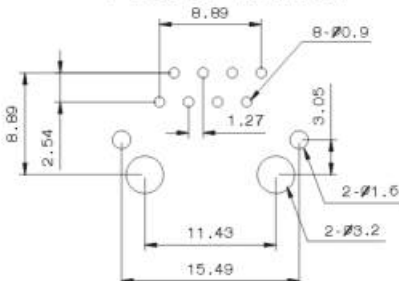
MATERIAL

Shielded: 0.25mm Thickness Copper Alloy With Tin Plated
 Housing : Standard Material Glass Filled Polyester (UL94V-0)
 Standard Color Black
 Contact : 0.35mm Thickness Alloy C5210, Gold Plating Over
 Nickel in Contact Area.
 Tin Plating Over Nickel in Solder Area.

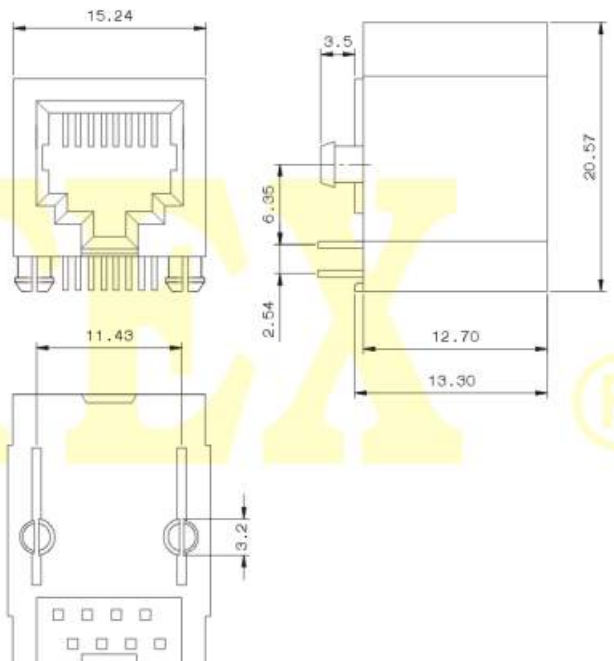
METAL SHELL



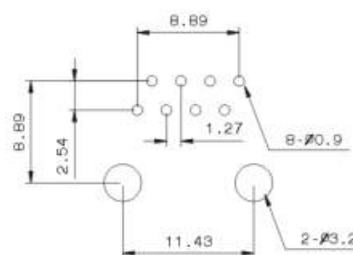
P.C.B. LAYOUT



ALL PLASTIC



P.C.B. LAYOUT



ORDER INFORMATION:

Series No.	Pins	Contact Plating
242A	8P8C	S
All Plastic	8P8C	S: Selective Gold S1: 5u" Selective Gold S2: 15u" Selective Gold S3: 30u" Selective Gold

Series No.	Pins	Contact Plating
242M	8P8C	S
Metal Shell	8P8C	S: Selective Gold S1: 5u" Selective Gold S2: 15u" Selective Gold S3: 30u" Selective Gold