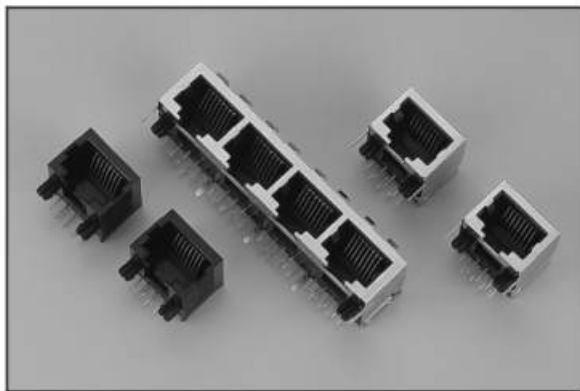


LOW PROFILE PCB JACK

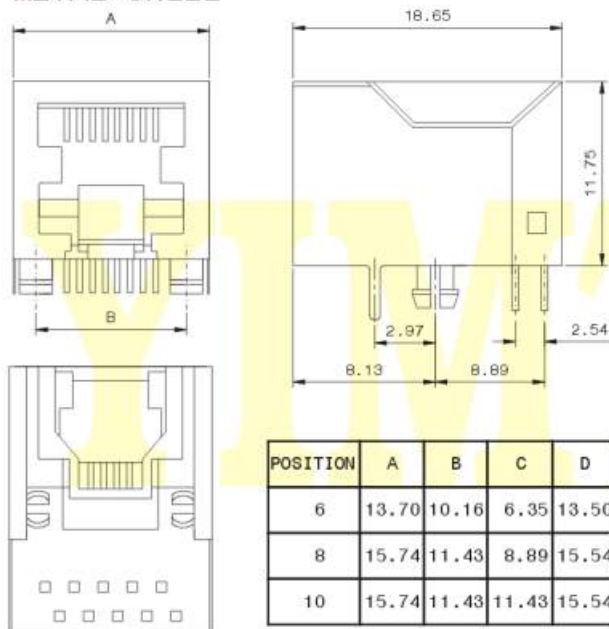
YIMTEX .



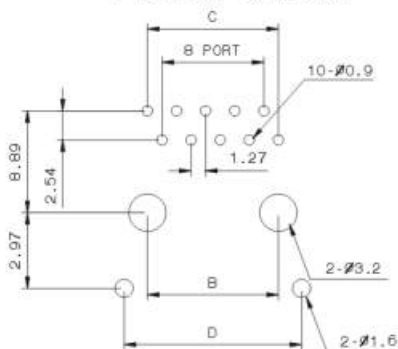
MATERIAL

Shielded: 0.25mm Thickness Copper Alloy With Tin Plated
 Housing : Standard Material Glass Filled Polyester (UL94V-0)
 Standard Color Black
 Contact : 0.35mm Thickness Alloy C5210, Gold Plating Over
 Nickel in Contact Area.
 Tin Plating Over Nickel in Solder Area.

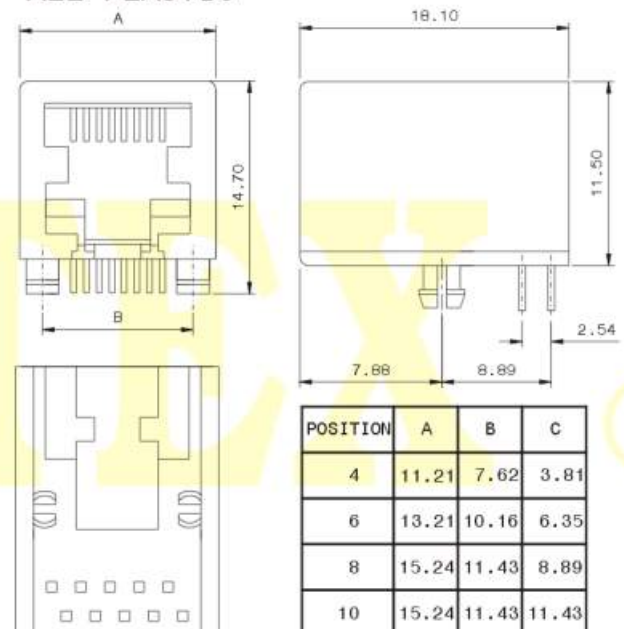
METAL SHELL



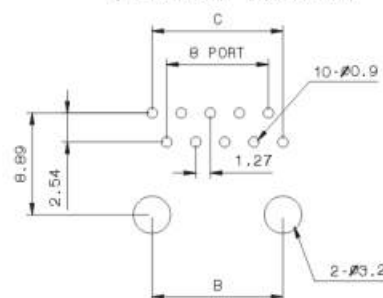
P.C.B. LAYOUT



ALL PLASTIC



P.C.B. LAYOUT



ORDER INFORMATION:

| Series No. | Pins | Contact Plating |
|-------------|--------|-------------------------|
| 244A | 10P8C | S |
| All Plastic | 10P4C | S: Selective Gold |
| | 10P6C | S1: 5u" Selective Gold |
| | 10P8C | S2: 15u" Selective Gold |
| | 10P10C | S3: 30u" Selective Gold |

| Series No. | Pins | Contact Plating |
|-------------|--------|-------------------------|
| 244M | 10P8C | S |
| Metal Shell | 10P4C | S: Selective Gold |
| | 10P6C | S1: 5u" Selective Gold |
| | 10P8C | S2: 15u" Selective Gold |
| | 10P10C | S3: 30u" Selective Gold |