

REV.	DESCRIPTION	DRAWN	CHECKED	APPROVED
A	NEW RELEASE	LJC 07/20/12'		

**NOTES:**

**1.Materials:**

- 1.1. Insulator: High Temperature 260°C,UL94-HB Rated, color of white or black.RoHS,REACH compliance.
- 1.2. Pin: Copper Alloy, Plating Matt Tin or Gold.
- 1.3. Clip: Beryllium Copper, C17200,Full Gold plating.

**2.Specifications:**

- 2.1. Temperature Range: -55~+125°C.
- 2.2. Contact Resistance: 10mΩ maximum.
- 2.3. Insulation Resistance: 1000MΩ minimum.
- 2.4. Dielectric Withstanding Voltage: 500V AC 1 minute.
- 2.5. Voltage Rating: 100V AC/DC.
- 2.6. Current Rating: 1A max per pin.
- 2.7. Application insert pin: Ø0.45~Ø0.60mm.
- 2.8. Resistance to soldering heat: 260°C,3-5seconds.
- 2.9. Durability: 1000 cycles min.

**3. Product Number Code:**

DS1137-02 - X X X X X X

- Packing Type  
R: Tape On Reel.
- Clip plating(Female Only)  
6: Full matt tin.  
8: Full gold flash.  
C: Full 3u" gold.
- Pin plating  
6: Full matt tin.  
8: Full gold flash.
- Housing Color  
W: White  
B: Black
- Connector Type  
F: Female  
M: Male
- No. of positions  
2: 2p ~ 10: 10p

# Female

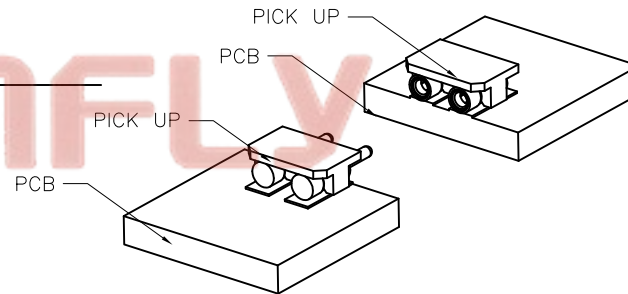
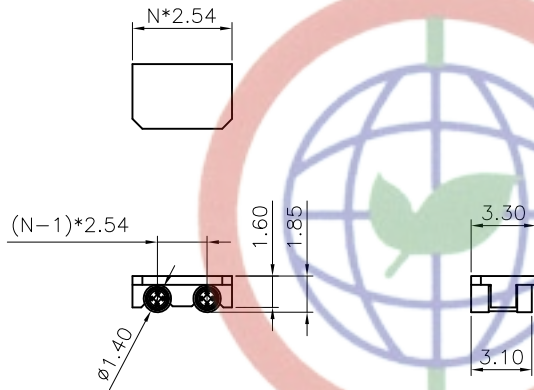
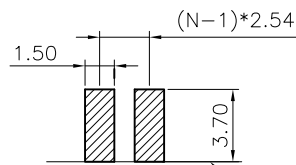
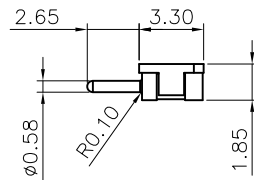
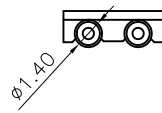
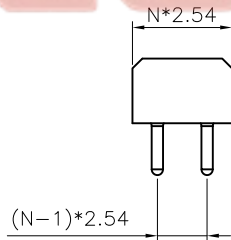


Figure of PCB Mounting



RECOMMEND PCB LAYOUT TOLERANCE=±0.05mm

# Male

GENERAL TOLERANCE		ANGLE TOLERANCE	
X.	±0.60	X.	±5°
.X	±0.38	.X	±3°
.XX	±0.25	.XX	±2°

DRAWING TYPE	CUSTOMER		
SCALE	1:1	SHEET	1 OF 1
DRAWING NO.	C-DS1137-02-XXXXXX-A		

PROJECTION	TITLE
	2.54mm LED Series Plug & Socket SMT Type Connector H=1.85mm
UNITS	mm
SHEET SIZE	A4
SERIES	DS1137-02 SERIES

晨翔电子有限公司  
**CONNFLY CONNFLY ELECTRONIC CO. LTD**

Tel:86-574-63508787  
Fax:86-574-63510817  
E-mail:sale@zhenqin.com  
Http://www.connfly.com