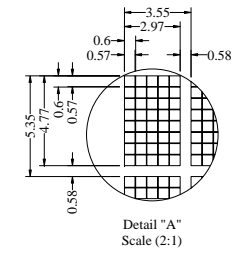
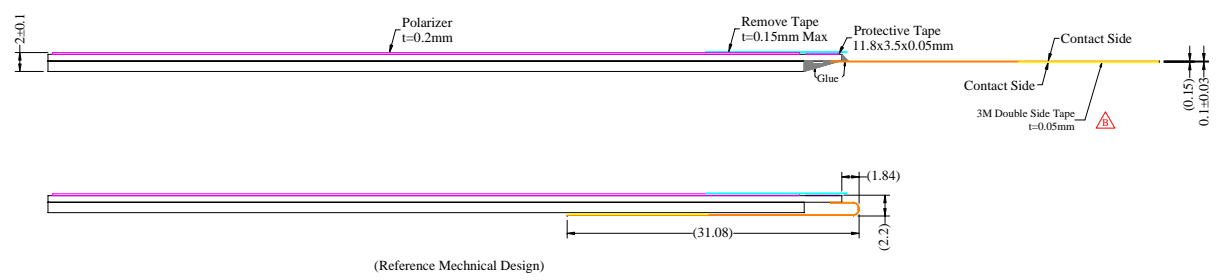
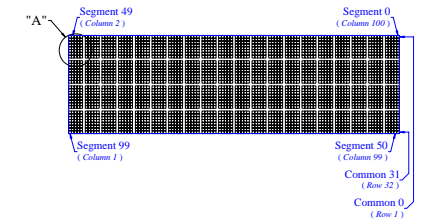
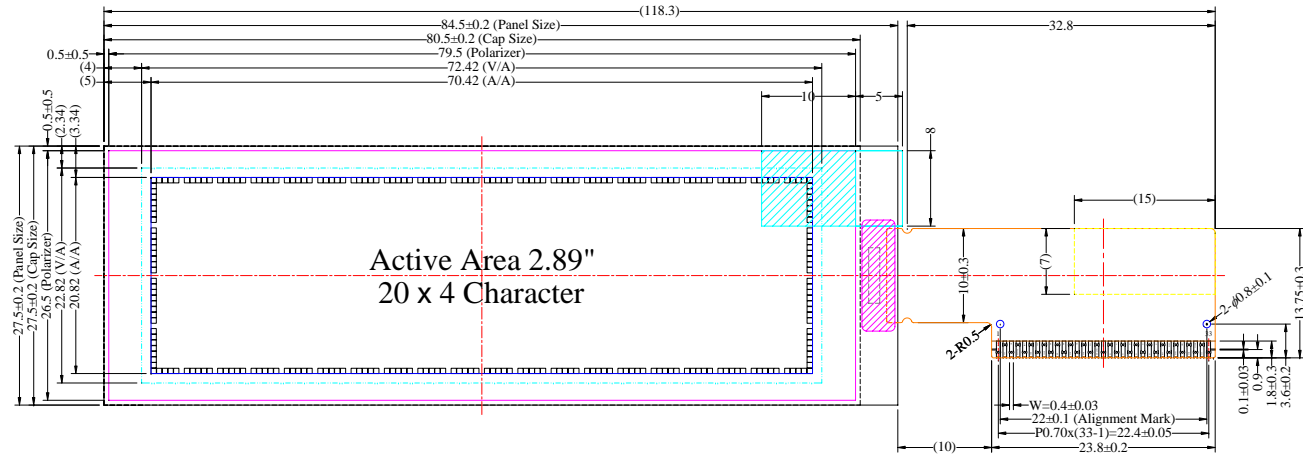


Item	Date	Remark
A	20111108	Original Drawing
B	20120309	Add Double Side Tape On FPC



Pin	Symbol
1	N.C.
2	VSL
3	VSS
4	REGVDD
5	SHLC
6	SHLS
7	VDD
8	VDDO
9	BS0
10	BS1
11	BS2
12	GPIO
13	CS#
14	RES#
15	D/C#
16	R/W#(WR#)
17	E/RD#
18	D0
19	D1
20	D2
21	D3
22	D4
23	D5
24	D6
25	D7
26	IREF
27	ROM0
28	ROM1
29	OPR0
30	OPR1
31	VCOMH
32	VCC
33	N.C.

- Notes:
- Color: White
  - Driver IC: US2066
  - FPC Number: UT-0166-P01
  - Interface: 4-/8-bit 68XX/80XX Parallel, SPI, I2C
  - General Tolerance:  $\pm 0.30$
  - The total thickness (2.10 Max) is without polarizer protective film & remove tape. The actual assembled total thickness with above materials should be 2.35 Max.

Customer Approval Signature	<b>WiseChip Semiconductor Inc.</b>							Drawing Number	Rev.
	Title UC-2004ASWAG01 Folding Type OEL Display Module Pixel Number: Character 20 x 4, Monochrome, COG Package							DMX2004SDGF02	B
								Material	
	Tolerance		Drawn	E.E.	Panel / E.	P.M.	Scale	Sheet	Size
Dimension	$\pm 0.3$	By	Gary Lin	Ting Kuo Hu	Ivy Lo	Kate Chung	1:1	1 of 1	A3
Angle	$\pm 1$	Date	20120309	20120309	20120309	20120309			