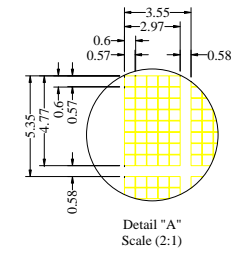
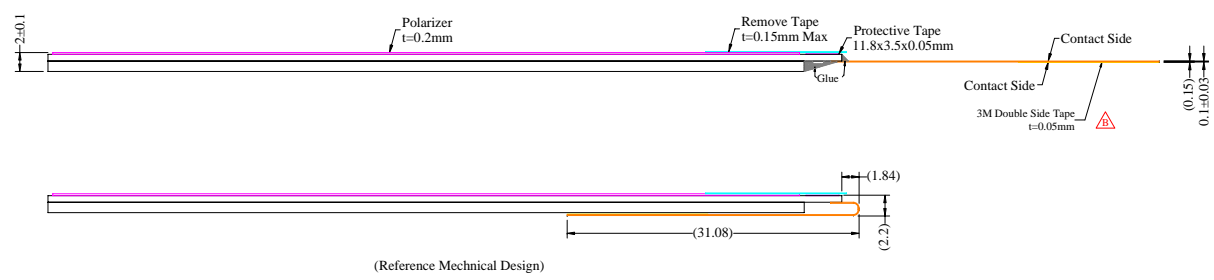
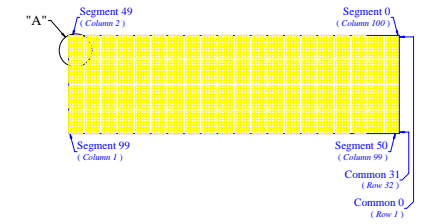
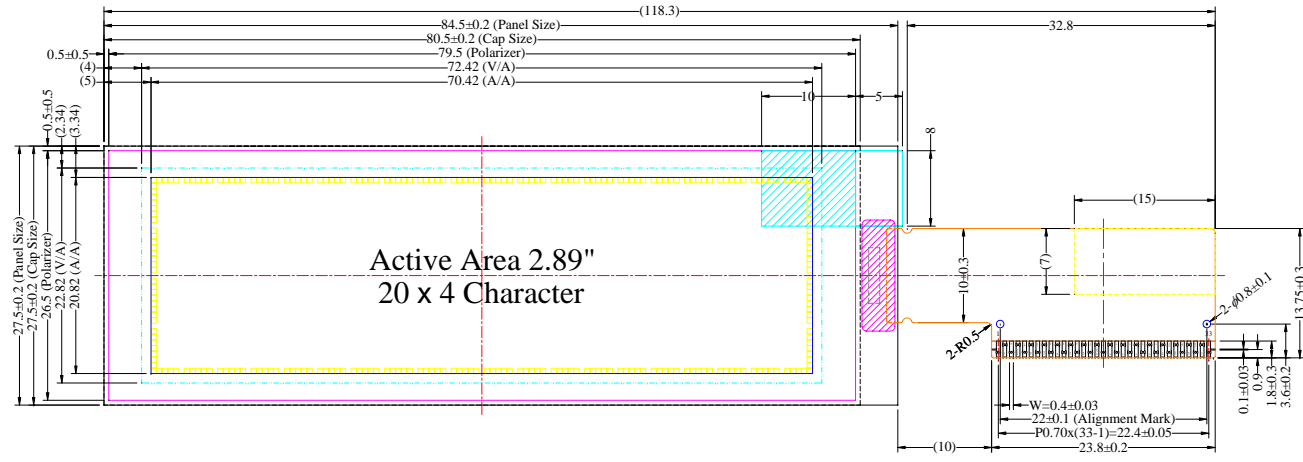


Item	Date	Remark
A	20110825	Original Drawing
B	20120309	Add Double Side Tape On FPC



Pin	Symbol
1	N.C.
2	VSL
3	VSS
4	REGVDD
5	SHLC
6	SHLS
7	VDD
8	VDDIO
9	BS0
10	BS1
11	BS2
12	GPIO
13	CS#
14	RES#
15	D/C#
16	R/W#(WR#)
17	E(RD#)
18	D0
19	D1
20	D2
21	D3
22	D4
23	D5
24	D6
25	D7
26	IREF
27	ROM0
28	ROM1
29	OPR0
30	OPR1
31	VCOMH
32	VCC
33	N.C.

- Notes:
- Color: Yellow
 - Driver IC: US2066
 - FPC Number: UT-0166-P01
 - Interface: 4-/8-bit 68XX/80XX Parallel, SPI, I2C
 - General Tolerance: ± 0.30
 - The total thickness (2.10 Max) is without polarizer protective film & remove tape. The actual assembled total thickness with above materials should be 2.35 Max.

Customer Approval Signature	WiseChip Semiconductor Inc.						Drawing Number	Rev.	
		Unless Otherwise Specified Unit: mm General Roughness: \sqrt{Ra} Tolerance: Dimension: ± 0.3 Angle: ± 1						DMX2004SDGF01	B
	Title	UC-2004ASYAG01 Folding Type OEL Display Module				Material		Soda Lime / Polyimide	
		Pixel Number: Character 20 x 4, Monochrome, COG Package				Scale	Sheet	Size	
	By	Drawn	E.E.	Panel / E.	P.M.	1:1	1 of 1	A3	
	Date	20120309	20120309	20120309	20120309				