



Electret Condenser Microphone

Electret Condenser Microphone

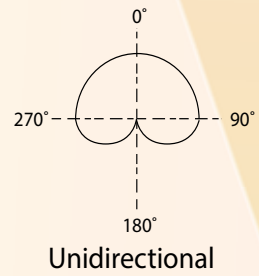
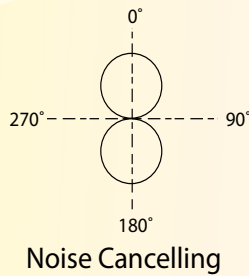
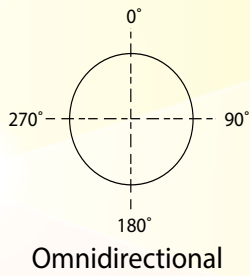
Speedy Reference List

Part Number	Page	Part Number	Page
SMD Type-Φ4.0x1.3		Omnidirectional-Φ9.4x6.5	
KEEG13**SBL SERIES	E-04	KEBG6542PF-D	E-15
Waterproof Type		Omnidirectional-Φ10.0x4.5	
KEEG1538WB-100LB	E-04	KEAG6538TF-K	E-16
KECG2742WBL-25L	E-05	Omnidirectional-Φ11.0x6.5*	
Noise Canceling Type-Φ6.0x2.7		KECG2224WFL-G01R	E-17
KERG2748TBX-KM	E-05	Unidirectional-Φ4.0x1.5	
Omnidirectional-Φ3.0x1.5		KETG1544TB-RF-CL	E-17
KEFG15*TBL/WBL/TB SERIES	E-06	Unidirectional-Φ6.0X2.2	
Omnidirectional-Φ3.5x2.0		KEKG22**TBL/PBL/TB/WB SERIES	E-18
KEFG1541WB-G07	E-07	Unidirectional-Φ6.0X2.7	
Omnidirectional-Φ4.0x1.4		KEKG2747TBX-KM	E-19
KEEG1140WB-13LA	E-07	Unidirectional-Φ9.7X4.5	
Omnidirectional-Φ4.0x1.5		KEIG4537WBL-25L	E-19
KEEG15**CBL/TBL/PBL/TBJ/TB/WB SERIES	E-08	Unidirectional-Φ11.0X6.5*	
Omnidirectional-Φ4.6x1.8		KEKG2741WBL-G01S	E-20
KEEG1340WBL-GN1	E-09	Unidirectional-Φ12.25X5.95*	
Omnidirectional-Φ4.8x2.8		KEIG4537TFL-G02	E-20
KEEG1542WBL-GKB	E-09	High S/N R-Φ6.0x2.4	
Omnidirectional-Φ6.0x1.3		KECG2237TBL-SN65	E-21
KECG1338TB-A1	E-10	High S/N R-Φ6.0x3.5	
Omnidirectional-Φ6.0x1.5		KECH2732TBL-SN70	E-21
KECG1542PBL-A	E-10	High S/N R-Φ9.7x4.5	
Omnidirectional-Φ6.0x2.7		KEIG4537TFX-SN72/KEIG4537TFL-N	E-22
KECG27**CBL/TBL/PBL/CBJ/TBJ/PBJ/WBJ/ WFJ/TB/TF/PB SERIES	E-11	KEAG4534TBL-SN	E-22
Omnidirectional-Φ6.0x3.6		High S/N R-Φ14.0x6.5	
KECG36**TFL/PFJ/PF/TF/WF SERIES	E-12	KEAG6535TB-KM	E-23
Omnidirectional-Φ6.4x2.0*		KEIG6535TB-KM1	E-23
KECG1042WBL-G02	E-13	High S/N R-Φ25.0x6.3	
Omnidirectional-Φ7.1x4.0*		KEIG6334TB-KN	E-24
KEEG1525WBX-G11	E-13	Unidirectional-Handsfree	
Omnidirectional-Φ7.3x3.7*		KEIG4524WFL-3KL	E-24
KECG2034WBL-G01B	E-14	KECG1050L	E-25
Omnidirectional-Φ7.3x5.7*		KEAG1500L	E-25
KEEG1525WBL-G2A	E-14		
Omnidirectional-Φ8.1x3.5*			
KECG2726WFL-G24T	E-15		

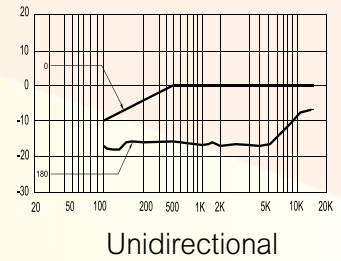
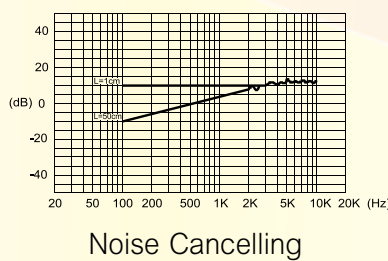
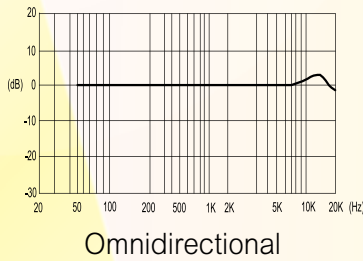
* : Dimension with rubber holder

Important Information

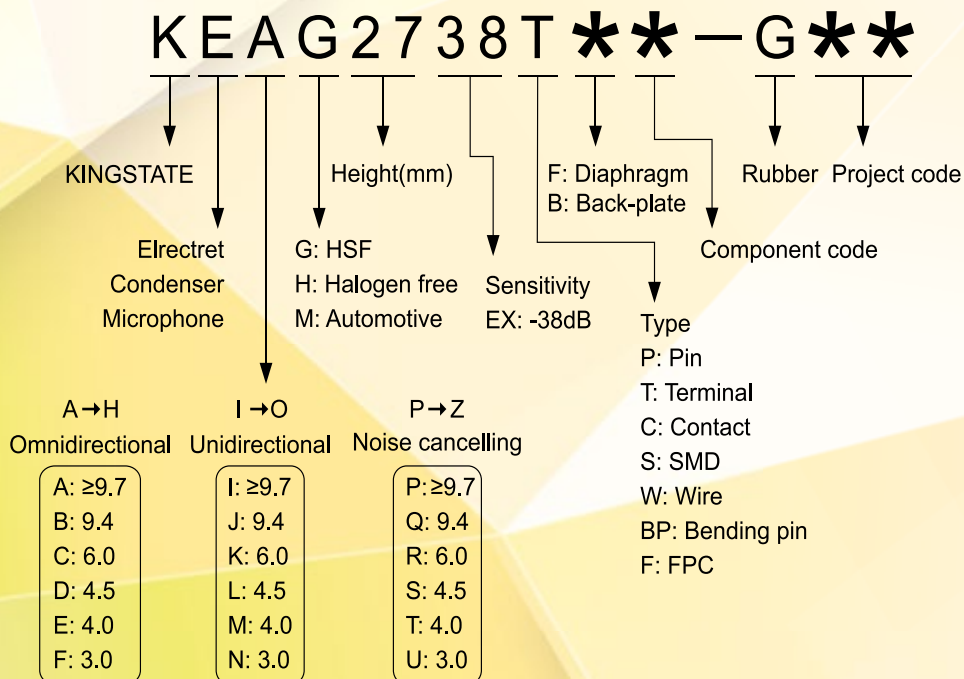
The relation between pascal and ubar is as follow. So the sensitivity will increase 20dB with "Pa" indication.
EXAMPLE: -60dB (0dB = 1 V/ubar) = -40dB (0dB = 1 V/Pa)



Characteristic



Electret Condenser Microphone Coding System



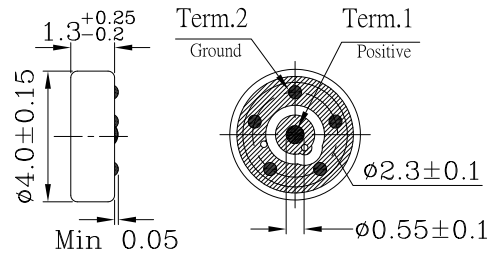
E
Electret Condenser Microphone

SMD-Φ4.0x1.3

KEEG13**SBL SERIES-Omnidirectional



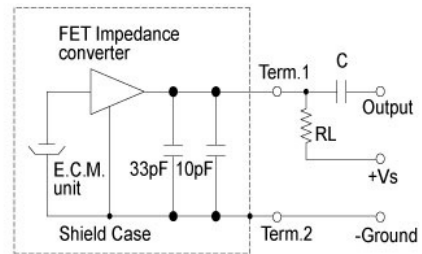
Dimension



Tol: ± 0.5 Unit: mm

Standard Voltage (VDC)	2.0
Max. Operating Voltage (VDC)	10.0
Max. Current Consumption (mA)	0.5@Vs=2.0VDC RL=2.2K ohm
Sensitivity (dB)	-38 ~ -48 ± 3
Impedance (Ω)	2.2K
Frequency Range(Hz)	100 ~ 20,000
Sensitivity Reduction (dB)	-3@f=1KHz, 1Pa, Vs=2.0VDC to 1.5VDC
S/N Ratio (dBA)	54 ~ 60
Dimension (mm)	Φ4.0xH1.3

Schematic Diagram



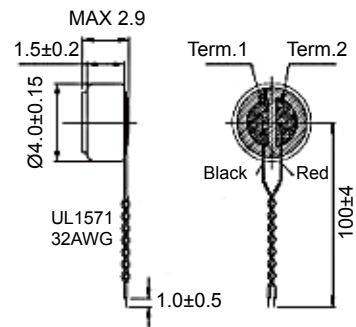
Electret Condenser Microphone

Waterproof Type-Φ4.0x2.9

KEEG1538WB-100LB



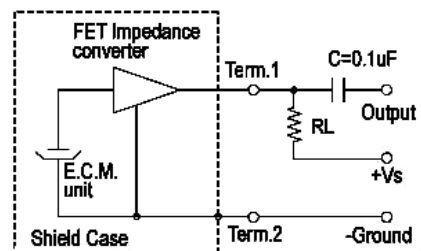
Dimension



Tol: ± 0.5 Unit: mm

Standard Voltage (VDC)	2.0
Max. Operating Voltage (VDC)	10.0
Max. Current Consumption (mA)	0.5@Vs=2.0VDC RL=2.2K ohm
Sensitivity (dB)	-38 ± 3
Impedance (Ω)	2.2K
Frequency Range(Hz)	20 ~ 20,000
Sensitivity Reduction (dB)	-3@f=1KHz, 1Pa, Vs=2.0VDC to 1.5VDC
S/N Ratio (dBA)	58
Dimension (mm)	Φ4.0xH2.9
IP Rate	IP67

Schematic Diagram

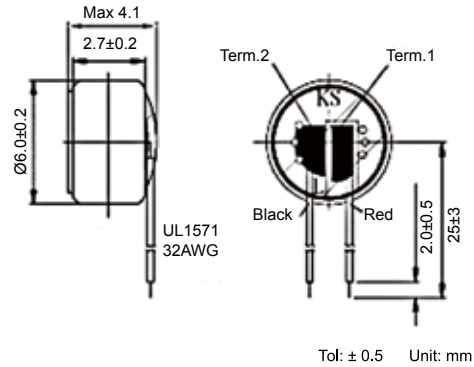


Waterproof Type-Φ6.0x4.1

KECG2742WBL-25L

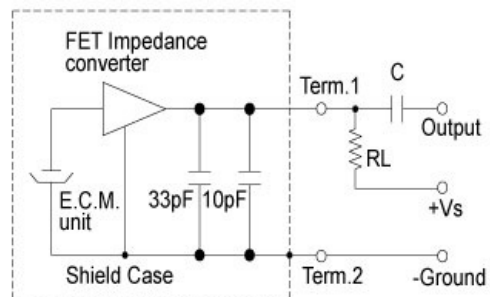


Dimension



Tol: ± 0.5 Unit: mm

Schematic Diagram



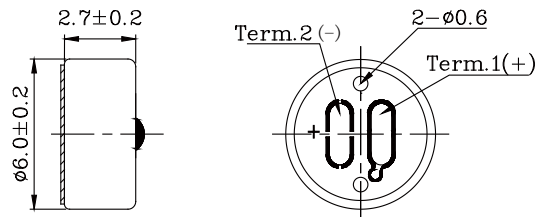
Standard Voltage (VDC)	2.0
Max. Operating Voltage (VDC)	10.0
Max. Current Consumption (mA)	0.5@Vs=2.0VDC RL=2.2K ohm
Sensitivity (dB)	-42 ± 3
Impedance (Ω)	2.2K
Frequency Range(Hz)	100 ~ 20,000
Sensitivity Reduction (dB)	-3@f=1KHz, 1Pa, Vs=2.0VDC to 1.5VDC
S/N Ratio (dBA)	57
Dimension (mm)	Φ6.0xH4.1
IP Rate	IP57

Noise-Canceling Type-Φ6.0x2.7

KERG2748TBX-KM

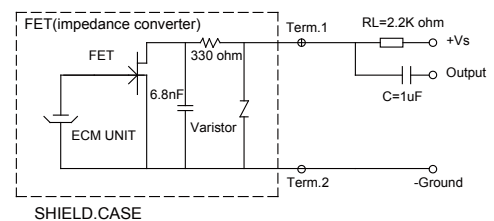


Dimension



Tol: ± 0.5 Unit: mm

Schematic Diagram



Standard Voltage (VDC)	2.0
Max. Operating Voltage (VDC)	10.0
Max. Current Consumption (mA)	0.5@Vs=2.0VDC RL=2.2K ohm
Sensitivity (dB)	-48 ± 3
Impedance (Ω)	2.2K
Frequency Range(Hz)	50 ~ 16,000
Sensitivity Reduction (dB)	-3@f=1KHz, 1Pa, Vs=2.0VDC to 1.5VDC
S/N Ratio (dBA)	58
Dimension (mm)	Φ6.0xH2.7

E Electret Condenser Microphone

Omnidirectional-Φ3.0x1.5

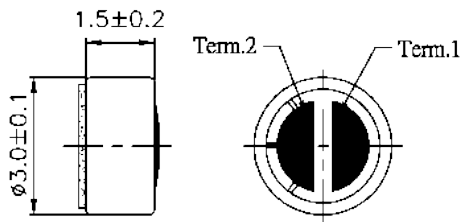
KEFG15*TBL/WBL/TB SERIES



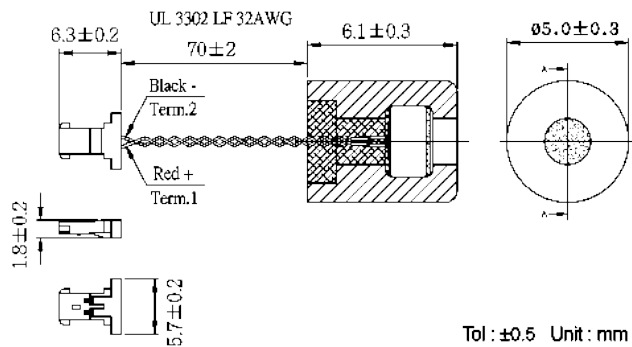
Standard Voltage (VDC)	2.0	
Max. Operating Voltage (VDC)	10.0	
Max. Current Consumption (mA)	0.5 @Vs=2.0VDC RL=2.2KΩ	
Sensitivity (dB)	-38 ~ -48 ± 3	
Impedance (Ω)	2.2K	
Frequency Range (Hz)	100 ~ 20,000	
Sensitivity Reduction (dB)	-3@f=1KHz, 1Pa, Vs=2.0VDC to 1.5VDC	
S/N Ratio (dB)	54 ~ 60	
Dimension (mm)	Φ3.0xH1.5	Φ5.0xH6.1

Dimension

TERMINAL TYPE

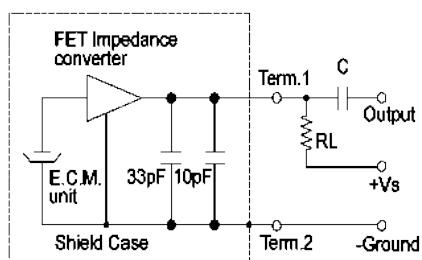


WIRE TYPE

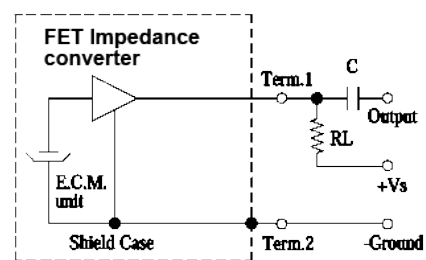


Schematic Diagram

TBL/WBL



TB

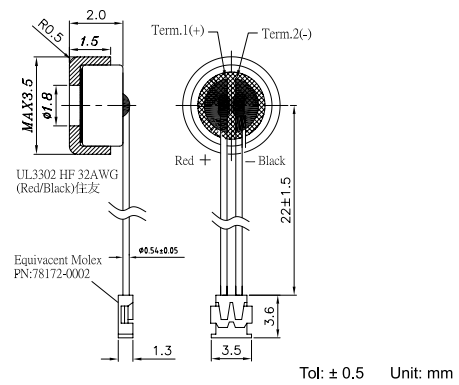


Omnidirectional-Φ3.5x2.0

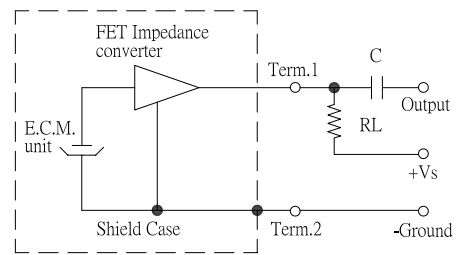
KEFG1541WB-G07



Dimension



Schematic Diagram



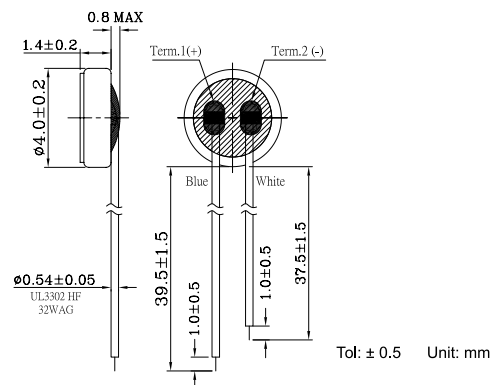
Standard Voltage (VDC)	2.0
Max. Operating Voltage (VDC)	5.0
Max. Current Consumption (mA)	0.5@Vs=2.0VDC RL=2.2Kohm
Sensitivity (dB)	-41 ± 3
Impedance (Ω)	2.2K
Frequency Range(Hz)	100 ~ 20,000
Sensitivity Reduction (dB)	-3@f=1KHZ.1Pa Vs=2.0VDC to 1.5VDC
S/N Ratio (dBA)	58
Dimension (mm)	Φ3.5xH2.0

Omnidirectional-Φ4.0x1.4

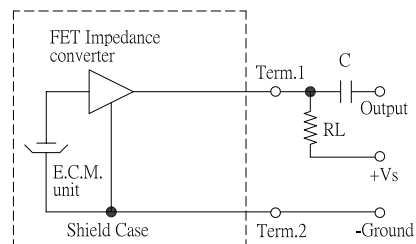
KEEG1140WB-13LA



Dimension



Schematic Diagram



Standard Voltage (VDC)	2.0
Max. Operating Voltage (VDC)	10.0
Max. Current Consumption (mA)	0.5@Vs=2.0VDC RL=2.2K ohm
Sensitivity (dB)	-40 ± 3
Impedance (Ω)	2.2K
Frequency Range(Hz)	20 ~ 20,000
Sensitivity Reduction (dB)	-3@f=1.0KHz, 1Pa, Vs=2.0VDC to 1.5VDC
S/N Ratio (dBA)	60
Dimension (mm)	Φ4.0xH1.4

Omnidirectional-Φ4.0x1.5

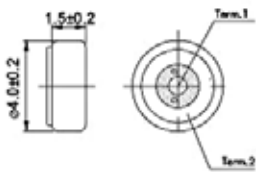
KEEG15**CBL/TBL/PBL/TBJ/TB/WB SERIES



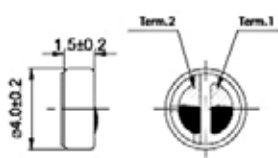
Standard Voltage (VDC)	2.0
Max. Operating Voltage (VDC)	10.0
Max. Current Consumption (mA)	0.5 @Vs=2.0VDC RL=2.2KΩ
Sensitivity (dB)	-38 ~ -48 ± 3
Impedance (Ω)	2.2K
Frequency Range (Hz)	100 ~ 20,000
Sensitivity Reduction (dBA)	-3@f=1KHz, 1Pa, Vs=2.0VDC to 1.5VDC
S/N Ratio (dB)	54 ~ 60
Dimension (mm)	Φ4.0xH1.5

Dimension

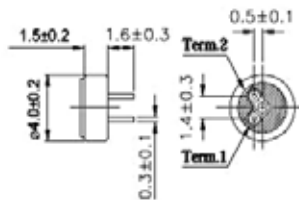
CONTACT TYPE



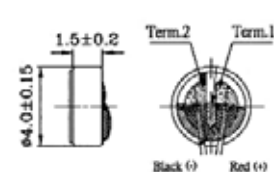
TERMINAL TYPE



PIN TYPE



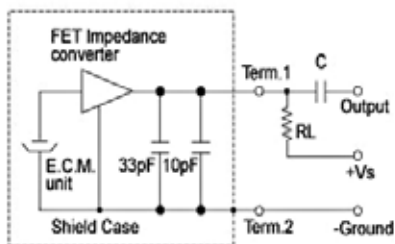
WIRE TYPE



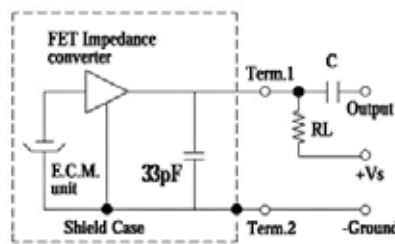
Tol : ±0.5 Unit : mm

Schematic Diagram

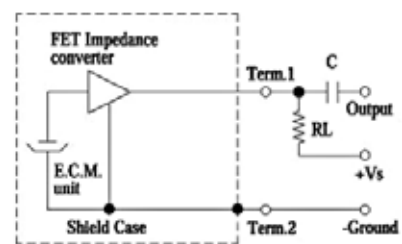
CBL/TBL/PBL



TBJ



TB/WB

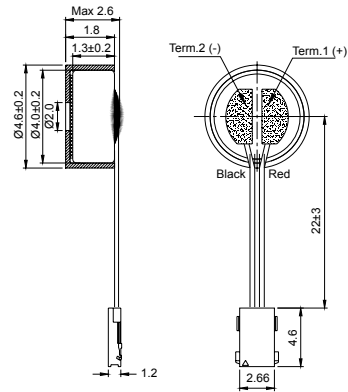


Omnidirectional-Φ4.6x1.8

KEEG1340WBL-GN1



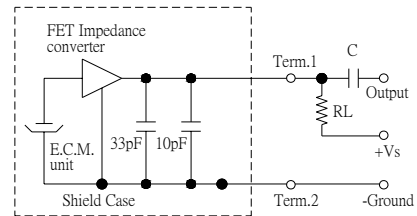
Dimension



Tol: ± 0.5 Unit: mm

Standard Voltage (VDC)	2.0
Max. Operating Voltage (VDC)	10.0
Max. Current Consumption (mA)	0.5@Vs=2.0VDC RL=2.2Kohm
Sensitivity (dB)	-40 ± 3
Impedance (Ω)	2.2K
Frequency Range (Hz)	100 ~ 20,000
Sensitivity Reduction (dB)	-3@f=1KHZ.1Pa Vs=2.0VDC to 1.5VD.C.
S/N Ratio (dBA)	60
Dimension (mm)	Φ4.6xH1.8

Schematic Diagram

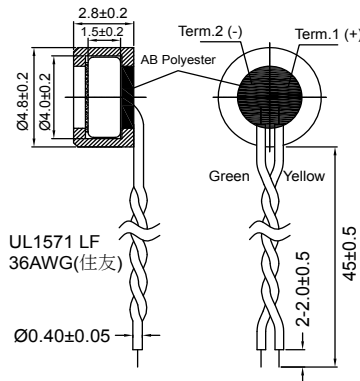


Omnidirectional-Φ4.8x2.8

KEEG1542WBL-GKB



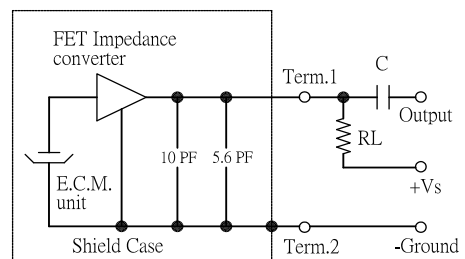
Dimension



Tol: ± 0.5 Unit: mm

Standard Voltage (VDC)	2.0
Max. Operating Voltage (VDC)	10.0
Max. Current Consumption (mA)	0.5@Vs=2.0VDC RL=2.2K ohm
Sensitivity (dB)	-42 ± 3
Impedance (Ω)	2.2K
Frequency Range (Hz)	20 ~ 20,000
Sensitivity Reduction (dB)	-3@f=1.0KHz, 1Pa, Vs=2.0VDC to 1.5VDC
S/N Ratio (dBA)	63
Dimension (mm)	Φ4.8xH2.8

Schematic Diagram

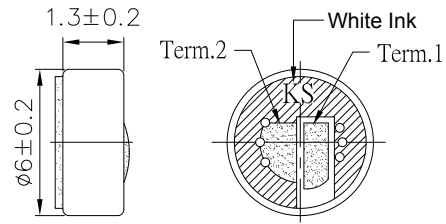


Omnidirectional-Φ6.0x1.3

KECG1338TB-A1

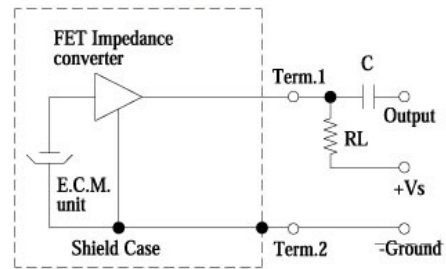


Dimension



Tol: ± 0.5 Unit: mm

Schematic Diagram



Standard Voltage (VDC)	2.0
Max. Operating Voltage (VDC)	10.0
Max. Current Consumption (mA)	0.5@Vs=2.0VDC RL=2.2Kohm
Sensitivity (dB)	-38 ± 3
Impedance (Ω)	2.2K
Frequency Range (Hz)	100 ~ 20,000
Sensitivity Reduction (dB)	-3@f=1KHZ.1Pa Vs=2.0VDC to 1.5VDC
S/N Ratio (dBA)	58
Dimension (mm)	Φ6.0xH1.3

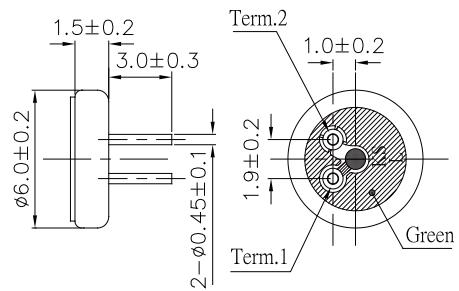


Omnidirectional-Φ6.0 x 1.5

KECG1542PBL-A

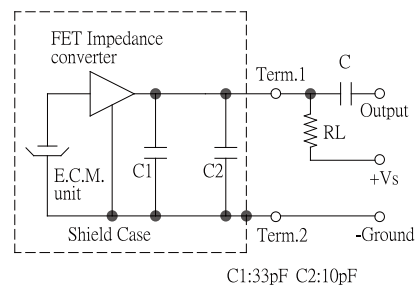


Dimension



Tol: ± 0.5 Unit: mm

Schematic Diagram



Standard Voltage (VDC)	2.0
Max. Operating Voltage (VDC)	10.0
Max. Current Consumption (mA)	0.5@Vs=2.0VDC RL=2.2K ohm
Sensitivity (dB)	-42 ± 3
Impedance (Ω)	2.2K
Frequency Range (Hz)	100 ~ 20,000
Sensitivity Reduction (dB)	-3@f=1.0KHz, 1Pa, Vs=2.0VDC to 1.5VDC
S/N Ratio (dBA)	58
Dimension (mm)	Φ6.0xH1.5

Omnidirectional-Φ6.0x2.7

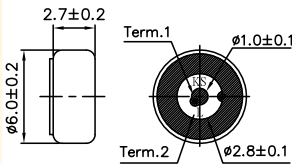
KECG27**CBL/TBL/PBL/CBJ/TBJ/PBJ/WBJ/WFJ/TB/TF/PB SERIES



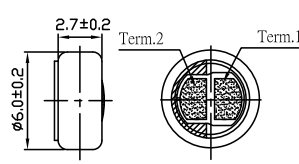
Standard Voltage (VDC)	2.0
Max. Operating Voltage (VDC)	10.0
Max. Current Consumption (mA)	0.5 @Vs=2.0VDC RL=1.5K ohm
Sensitivity (dB)	-38 ~ -48 ± 3
Impedance (Ω)	2.2K
Frequency Range (Hz)	100 ~ 20,000
Sensitivity Reduction (dB)	-3@f=1KHz, 1PA Vs=2.0VDC to1.5VDC
S/N Ratio (dB)	54 ~ 60
Dimension (mm)	Φ6.0xH2.7

Dimension

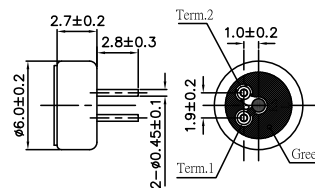
CONTACT TYPE



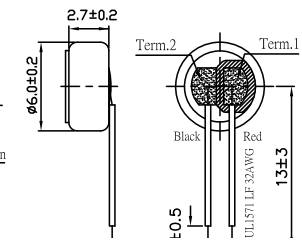
TERMINAL TYPE



PIN TYPE



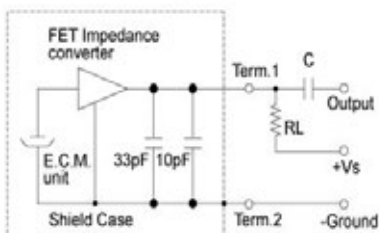
WIRE TYPE



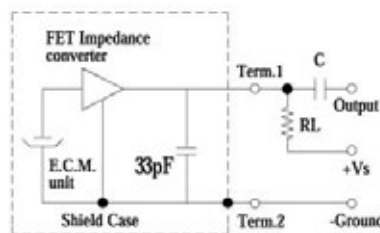
Tol: ± 0.5 Unit: mm

Schematic Diagram

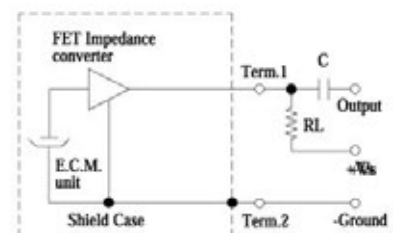
CBL/TBL/PBL



CBJ/TBJ/PBJ/WBJ/WFJ



TB/PB



Omnidirectional-Φ6.0x3.6

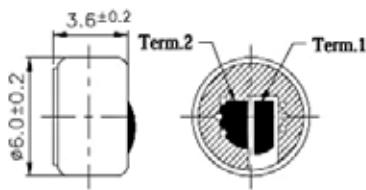
KECG36**TFL/PFJ/PF/TF/WF SERIES



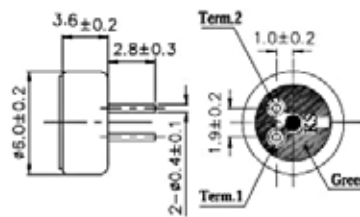
Standard Voltage (VDC)	2.0
Max. Operating Voltage (VDC)	10.0
Max. Current Consumption (mA)	0.5 @Vs=2.0VDC RL=2.2K ohm
Sensitivity (dB)	-38 ~ -48 ± 3
Impedance (Ω)	2.2K
Frequency Range (Hz)	100 ~ 20,000
Sensitivity Reduction (dB)	-3@f=1KHz, 1Pa Vs=2.0VDC to 1.5VDC
S/N Ratio (dBA)	56
Dimension (mm)	Φ6.0xH3.6

Dimension

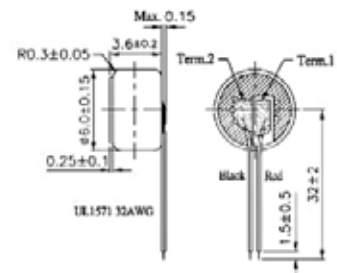
TERMINAL TYPE



PIN TYPE



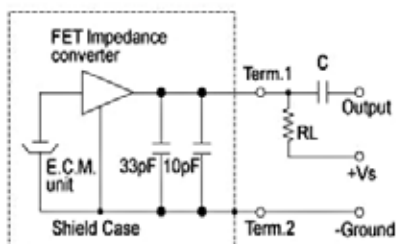
WIRE TYPE



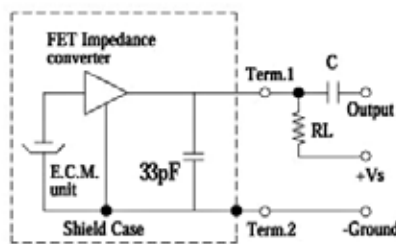
Tol : ±0.5 Unit : mm

Schematic Diagram

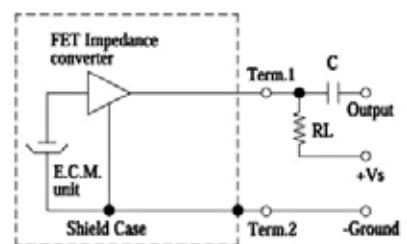
TFL



PFJ



TF/WF

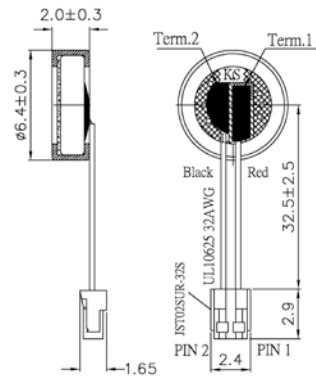


Omnidirectional-Φ6.4x2.0 (with rubber holder)

KECG1042WBL-G02



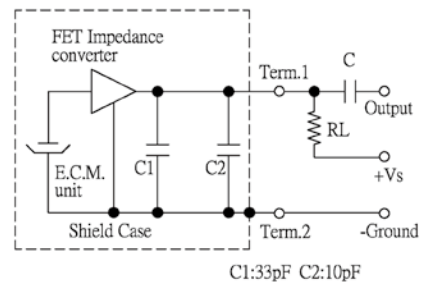
Dimension



Tol: ± 0.5 Unit: mm

Standard Voltage (VDC)	2.0
Max. Operating Voltage (VDC)	10.0
Max. Current Consumption (mA)	0.5@Vs=2.0VDC RL=2.2K ohm
Sensitivity (dB)	-42 ± 3
Impedance (Ω)	2.2K
Frequency Range (Hz)	100 ~ 20,000
Sensitivity Reduction (dB)	-3@f=1.0KHz, 1Pa, Vs=2.0VDC to 1.5VDC
S/N Ratio (dBA)	58
Dimension (mm)	Φ6.4xH2.0

Schematic Diagram



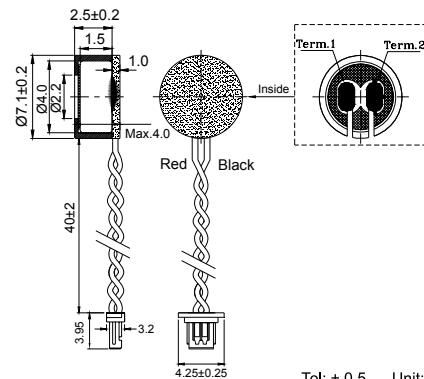
C1:33pF C2:10pF

Omnidirectional-Φ7.1x4.0 (with rubber holder)

KEEG1525WBX-G11



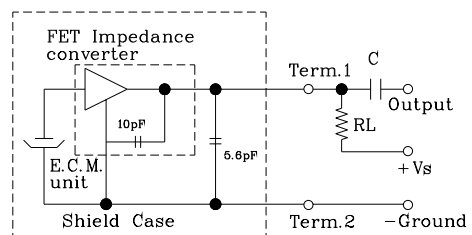
Dimension



Tol: ± 0.5 Unit: mm

Standard Voltage (VDC)	3.0
Max. Operating Voltage (VDC)	10.0
Max. Current Consumption (mA)	0.5@Vs=3.0VDC RL=2.2K ohm
Sensitivity (dB)	-25 ± 3
Impedance (Ω)	2.2K
Frequency Range (Hz)	100 ~ 20,000
Sensitivity Reduction (dB)	-3@f=1.0KHz, 1Pa, Vs=3.0VDC to 1.5VDC
S/N Ratio (dBA)	62
Dimension (mm)	Φ7.1xH4.0

Schematic Diagram

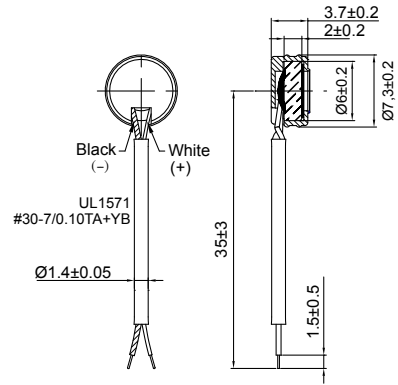


Omnidirectional- $\Phi 7.3 \times 3.7$ (with rubber holder)

KECG2034WBL-G01B

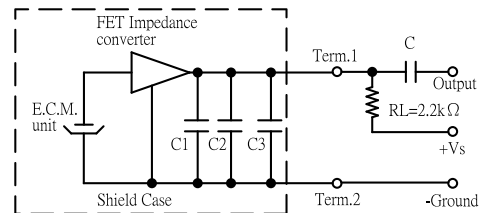


Dimension



Tol: ± 0.5 Unit: mm

Schematic Diagram



Standard Voltage (VDC)	2.0
Max. Operating Voltage (VDC)	10.0
Max. Current Consumption (mA)	0.5@Vs=2.0VDC RL=2.2K ohm
Sensitivity (dB)	-34 \pm 3
Impedance (Ω)	2.2K
Frequency Range(Hz)	100 ~ 20,000
Sensitivity Reduction (dB)	-3@f=1.0KHz, 1Pa, Vs=2.0VDC to 1.5VDC
S/N Ratio (dBA)	64
Dimension (mm)	$\Phi 7.3 \times H3.7$



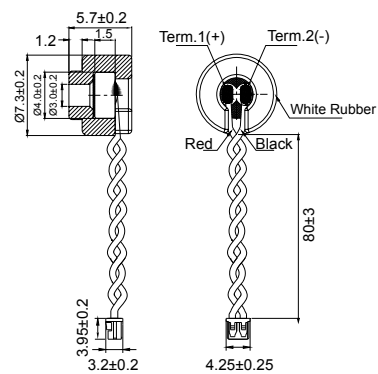
Electret Condenser Microphone

Omnidirectional- $\Phi 7.3 \times 5.7$ (with rubber holder)

KEEG1525WBL-G2A

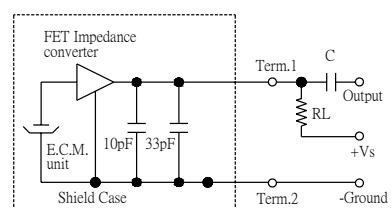


Dimension



Tol: ± 0.5 Unit: mm

Schematic Diagram



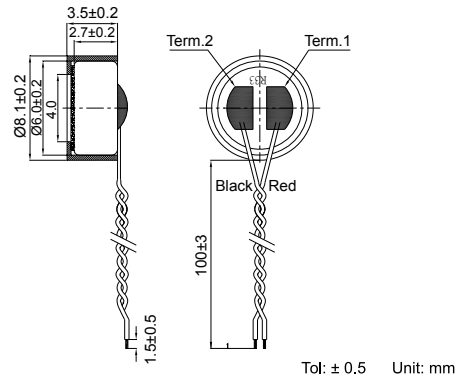
Standard Voltage (VDC)	3.0
Max. Operating Voltage (VDC)	10.0
Max. Current Consumption (mA)	0.5@Vs=3.0VDC RL=2.2K ohm
Sensitivity (dB)	-25 \pm 3
Impedance (Ω)	2.2K
Frequency Range (Hz)	100 ~ 20,000
Sensitivity Reduction (dB)	-3@f=1.0KHz, 1Pa, Vs=3.0VDC to 1.5VDC
S/N Ratio (dBA)	62
Dimension (mm)	$\Phi 7.3 \times H5.7$

Omnidirectional-Φ8.1x3.5 (with rubber holder)

KECG2726WFL-G24T

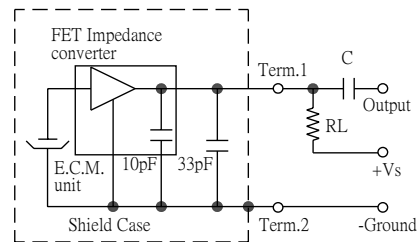


Dimension



Standard Voltage (VDC)	2.0
Max. Operating Voltage (VDC)	10.0
Max. Current Consumption (mA)	0.5@Vs=2.0V D.C. RL=2.2K ohm
Sensitivity (dB)	-26 ± 2
Impedance (Ω)	2.2K
Frequency Range(Hz)	20 ~ 10,000
Sensitivity Reduction (dB)	-3@f=1KHz, 1Pa, Vs=2.0V D.C. to 1.5V D.C.
S/N Ratio (dBA)	60
Dimension (mm)	Φ8.1xH3.5

Schematic Diagram

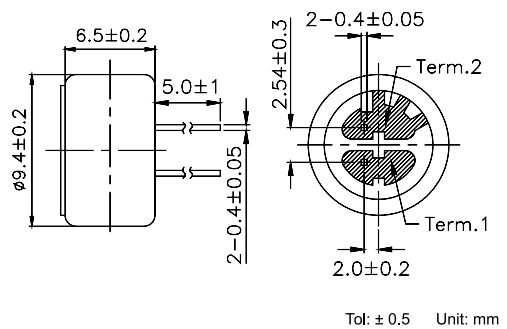


Omnidirectional-Φ9.4x6.5

KEBG6542PF-D

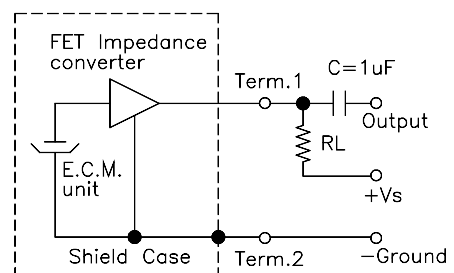


Dimension



Standard Voltage (VDC)	4.5
Max. Operating Voltage (VDC)	10.0
Max. Current Consumption (mA)	0.5@Vs=4.5VDC RL=1.0K ohm
Sensitivity (dB)	-42 ± 2
Impedance (Ω)	1.0K
Frequency Range (Hz)	20 ~ 20,000
Sensitivity Reduction (dB)	-3@f=1KHz, 1Pa, Vs=4.5VDC to 4.0VDC
S/N Ratio (dBA)	60
Dimension (mm)	Φ9.4xH6.5

Schematic Diagram

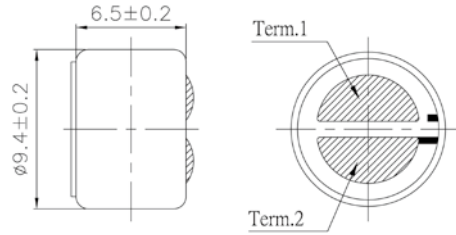


Omnidirectional-Φ9.4x6.5mm

KEAG6538TF-K

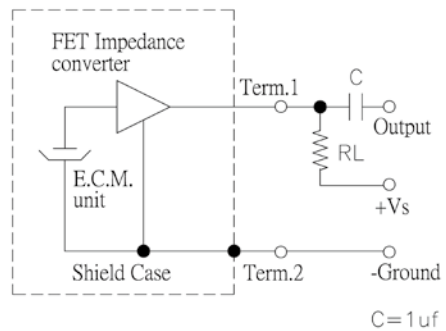


Dimension



Tol: ± 0.5 Unit: mm

Schematic Diagram



Standard Voltage (VDC)	4.5
Max. Operating Voltage (VDC)	10.0
Max. Current Consumption (mA)	0.5@Vs=4.5VDC RL=1.0K ohm
Sensitivity (dB)	-38 ± 3
Impedance (Ω)	1.0K
Frequency Range (Hz)	20 ~ 20,000
Sensitivity Reduction (dB)	-3@f=1KHz, 1Pa, Vs=4.5VDC to 4.0VDC
S/N Ratio (dBA)	60
Dimension (mm)	Φ9.4xH6.5



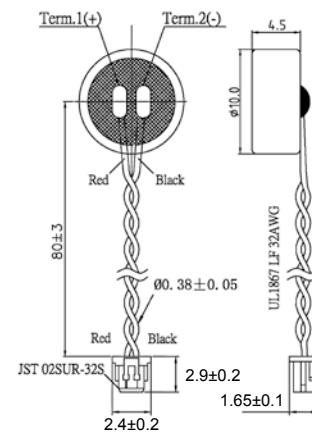
Electret Condenser Microphone

Omnidirectional-Φ10.0x4.5

KEAG4530WB-80L

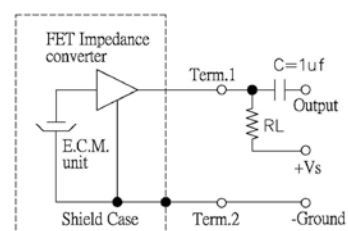


Dimension



Tol: ± 0.5 Unit: mm

Schematic Diagram



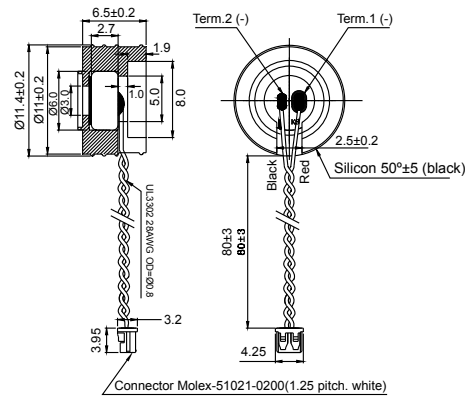
Standard Voltage (VDC)	2.0
Max. Operating Voltage (VDC)	10.0
Max. Current Consumption (mA)	0.5@Vs=2.0VDC RL=2.2K ohm
Sensitivity (dB)	-30 ± 3
Impedance (Ω)	2.2K
Frequency Range (Hz)	100 ~ 10,000
Sensitivity Reduction (dB)	-3@f=1.0KHz, 1Pa, Vs=2.0VDC to 1.5VDC
S/N Ratio (dBA)	70
Dimension (mm)	Φ10.0xH4.5

Omnidirectional-Φ11.0x6.5 (with rubber holder)

KECG2224WFL-G01R



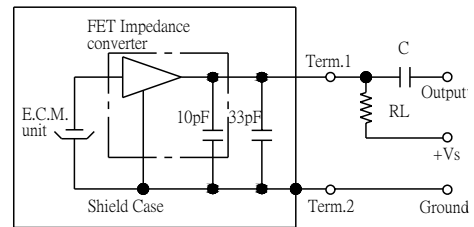
Dimension



Tol: ± 0.5 Unit: mm

Standard Voltage (VDC)	2.0
Max. Operating Voltage (VDC)	10.0
Max. Current Consumption (mA)	0.5@Vs=2.0VDC RL=2.2K ohm
Sensitivity (dB)	-24 ± 3
Impedance (Ω)	2.2K
Frequency Range (Hz)	100 ~ 20,000
Sensitivity Reduction (dB)	-3@f=1KHz, 1Pa, Vs=2.0VDC to 1.5VDC
S/N Ratio (dBA)	58
Dimension (mm)	Φ11.0xH6.5

Schematic Diagram

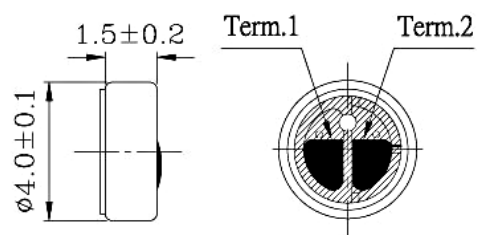


Unidirectional-Φ4.0x1.5

KETG1544TB-RF-CL



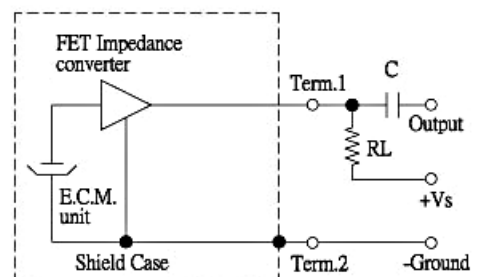
Dimension



Tol: ± 0.5 Unit: mm

Standard Voltage (VDC)	2.0
Max. Operating Voltage (VDC)	10.0
Max. Current Consumption (mA)	0.5@Vs=2.0VDC RL=2.2K ohm
Sensitivity (dB)	-44 ± 3
Impedance (Ω)	2.2K
Frequency Range (Hz)	100 ~ 20,000
Sensitivity Reduction (dB)	-3@f=1KHz, 1Pa, Vs=2.0VDC to 1.5VDC
S/N Ratio (dBA)	58
Dimension (mm)	Φ4.0xH1.5

Schematic Diagram



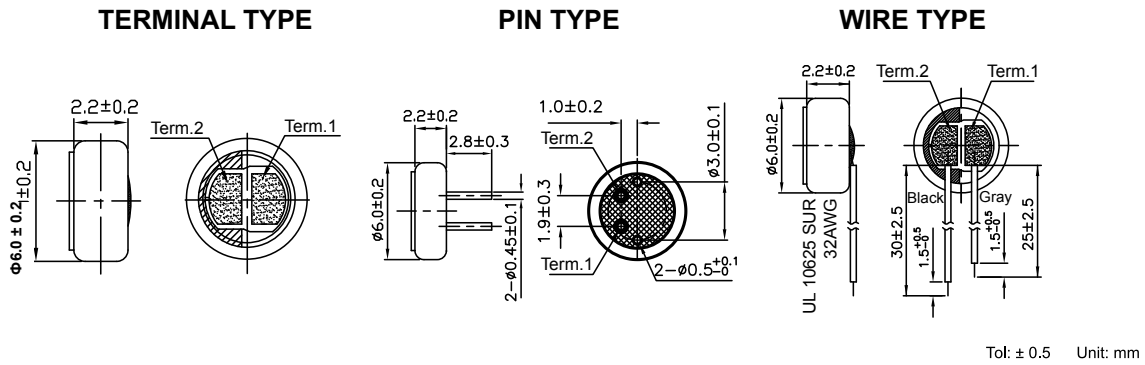
Unidirectional-Φ6.0x2.2

KEKG22**TBL/PBL/TB/WB SERIES

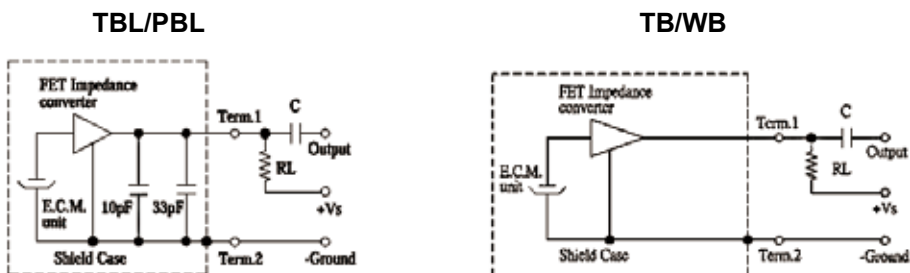


Standard Voltage (VDC)	2.0
Max. Operating Voltage (VDC)	10.0
Max. Current Consumption (mA)	0.5@Vs=2.0VDC> RL:2.2K ohm
Sensitivity (dB)	-47 ~ -54 ± 3
Impedance (Ω)	2.2K
Frequency Range (Hz)	100 ~ 20,000
Sensitivity Reduction (dB)	-3@f=1KHz, 1Pa Vs=2.0VDC to 1.5VDC
S/N Ratio (dBA)	56
Dimension (mm)	Φ6.0xH2.2

Dimension



Schematic Diagram

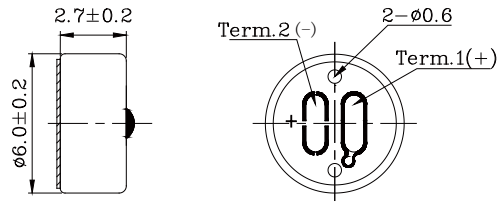


Unidirectional-Φ6.0x2.7

KEKG2747TBX-KM

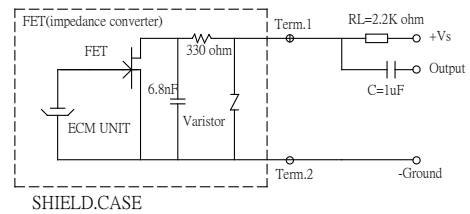


Dimension



Tol: ± 0.5 Unit: mm

Schematic Diagram



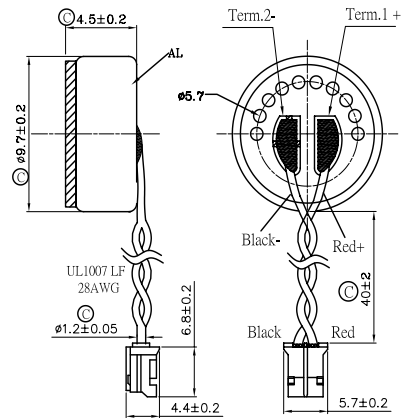
Standard Voltage (VDC)	2.0
Max. Operating Voltage (VDC)	10.0
Max. Current Consumption (mA)	0.5@Vs=2.0V D.C. RL=2.2K ohm
Sensitivity (dB)	-47 ± 3
Impedance (Ω)	2.2K
Frequency Range(Hz)	50 ~ 16,000
Sensitivity Reduction (dB)	-3@f=1KHz, 1Pa, Vs=2.0V. D. C. to 1.5V. D.C.
S/N Ratio (dBA)	54
Dimension (mm)	Φ6.0xH2.7

Unidirectional-Φ9.7x4.5

KEIG4537WBL-25L

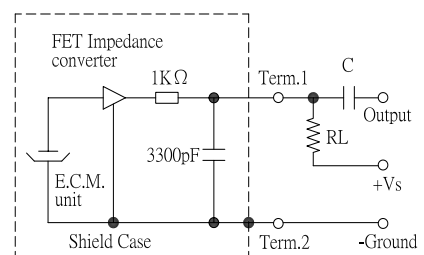


Dimension



Tol: ± 0.5 Unit: mm

Schematic Diagram



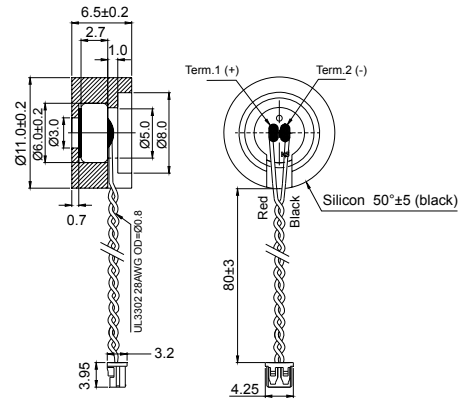
Standard Voltage (VDC)	2.5
Max. Operating Voltage (VDC)	10.0
Max. Current Consumption (mA)	0.5@Vs=2.0VDC RL=2.2K ohm
Sensitivity (dB)	-37 ± 3
Impedance (Ω)	2.2K
Frequency Range (Hz)	100 ~ 10,000
Sensitivity Reduction (dB)	-3@f=1KHz, 1Pa, Vs=2.5VDC to 1.0VDC
S/N Ratio (dBA)	65
Dimension (mm)	Φ9.7xH4.5

Unidirectional-Φ11.0x6.5 (with rubber holder)

KEKG2741WBL-G01S



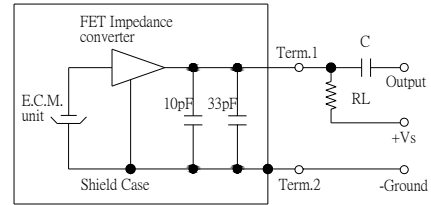
Dimension



Tol: ± 0.5 Unit: mm

Standard Voltage (VDC)	2.0
Max. Operating Voltage (VDC)	10.0
Max. Current Consumption (mA)	0.5@Vs=2.0VDC RL=2.2K ohm
Sensitivity (dB)	-41 ± 3
Impedance (Ω)	2.2K
Frequency Range (Hz)	100 ~ 20,000
Sensitivity Reduction (dB)	-3@f=1.0KHz, 1Pa, Vs=2.0VDC to 1.5VDC
S/N Ratio (dBA)	60
Dimension (mm)	Φ11.0xH6.5

Schematic Diagram



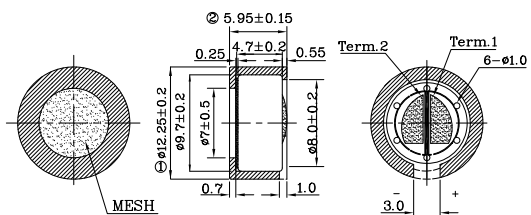
Electret Condenser Microphone

Unidirectional-Φ12.25x5.95 (with rubber holder)

KEIG4537TFL-G02



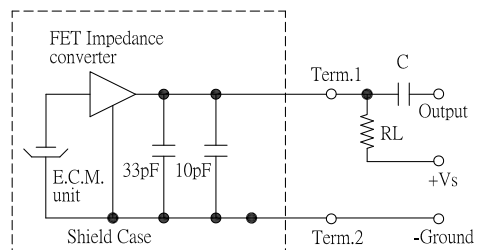
Dimension



Tol: ± 0.5 Unit: mm

Standard Voltage (VDC)	1.5
Max. Operating Voltage (VDC)	9.0
Max. Current Consumption (mA)	0.4@Vs=1.5VDC> RL:2.0K ohm
Sensitivity (dB)	-37 ± 3
Impedance (Ω)	2.2K
Frequency Range (Hz)	100 ~ 12,000
Sensitivity Reduction (dB)	-3@f=1.0KHz, 1Pa Vs=1.5VDC to 1.0VDC
S/N Ratio (dBA)	69
Dimension (mm)	Φ12.25xH5.95

Schematic Diagram

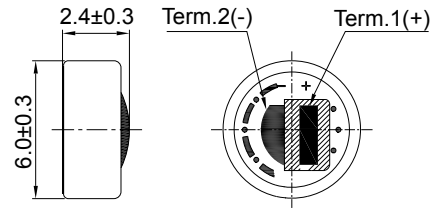


High S/N R-Φ6.0x2.4

KECG2237TBL-SN65

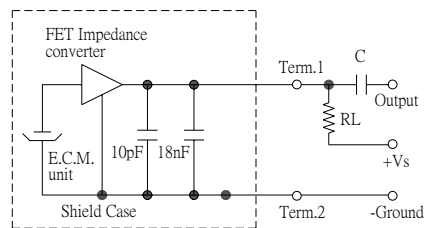


Dimension



Tol: ± 0.5 Unit: mm

Schematic Diagram



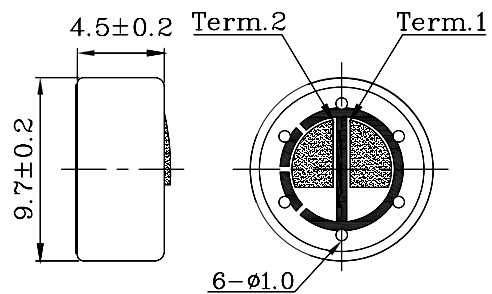
Standard Voltage (VDC)	2.0
Max. Operating Voltage (VDC)	10.0
Max. Current Consumption (mA)	0.5@Vs=2.0VDC RL=2.2K ohm
Sensitivity (dB)	-37 ± 3
Impedance (Ω)	2.2K
Frequency Range (Hz)	20 ~ 20,000
Sensitivity Reduction (dB)	-3@f=1.0KHz, 1Pa, Vs=2.0VDC to 1.0VDC
S/N Ratio (dBA)	65
Dimension (mm)	Φ6.0xH2.4

High S/N R-Φ6.0x3.5

KECH2732TBL-SN70

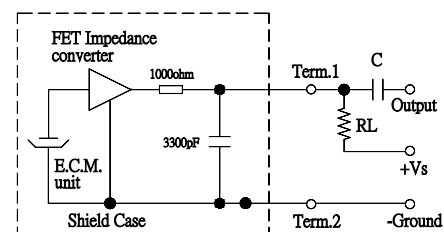


Dimension



Tol: ± 0.5 Unit: mm

Schematic Diagram



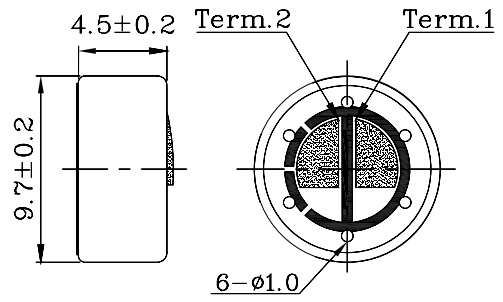
Standard Voltage (VDC)	3.0
Max. Operating Voltage (VDC)	10.0
Max. Current Consumption (mA)	0.5@Vs=2.0VDC RL=2.2K ohm
Sensitivity (dB)	-32 ± 3
Impedance (Ω)	2.0K
Frequency Range (Hz)	50 ~ 10,000
Sensitivity Reduction (dB)	-3@f=1.0KHz, 1Pa, Vs=3.0VDC to 1.5VDC
S/N Ratio (dBA)	70
Dimension (mm)	Φ6.0xH3.5

High S/N R-Φ9.7x4.5

KEIG4537TFX-SN72 KEIG4537TFL-N



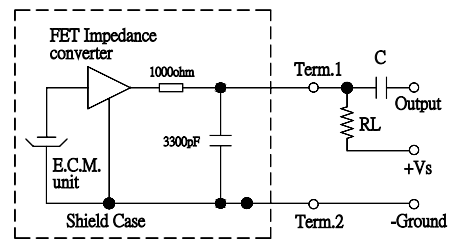
Dimension



Tol: ± 0.5 Unit: mm

Model Number	KEIG4537TFX-SN72	KEIG4537TFL-N
Standard Voltage (VDC)		1.5
Max. Operating Voltage (VDC)		9.0
Max. Current Consumption (mA)	0.4@Vs=1.5VDC> RL=2.0K ohm	0.4@Vs=1.5VDC= RL=2.0K ohm
Sensitivity (dB)		-37 ± 3
Impedance (Ω)		1.8K
Frequency Range (Hz)	100 ~ 20,000	100 ~ 12,000
Sensitivity Reduction (dB)	-3@f=1.0KHz, 1Pa Vs=1.5VDC to 2.0VDC	-3@f=1.0KHz, 1Pa Vs=1.5VDC to 1.0VDC
S/N Ratio (dBA)	72	69
Dimension (mm)	Φ9.7xH4.5	

Schematic Diagram

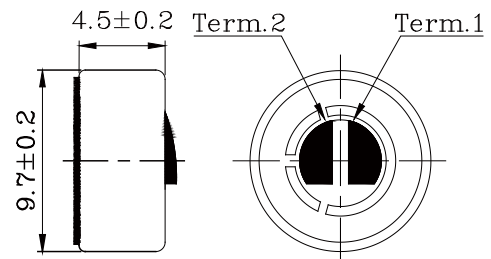


High S/N R-Φ9.7x4.5

KEAG4534TBL-SN

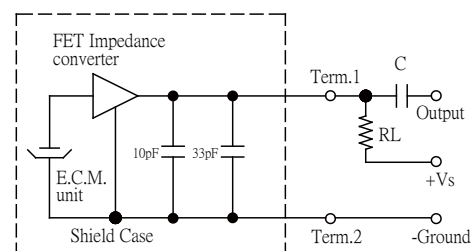


Dimension



Tol: ± 0.5 Unit: mm

Schematic Diagram

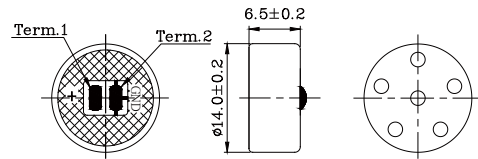


High S/N R-Φ14.0x6.5

KEAG6535TB-KM

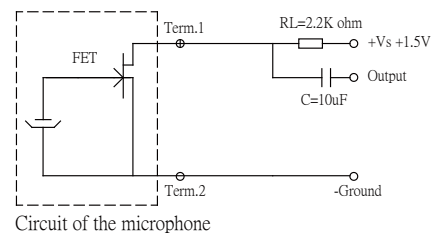


Dimension



Tol: ± 0.5 Unit: mm

Schematic Diagram



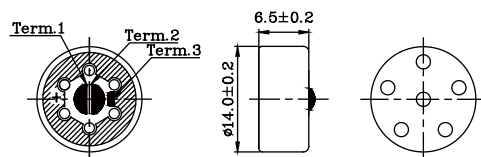
Standard Voltage (VDC)	1.5
Max. Operating Voltage (VDC)	10.0
Max. Current Consumption (mA)	0.5@Vs=2.0VDC> RL:2.2K ohm
Sensitivity (dB)	-35 ± 3
Impedance (Ω)	2.2K
Frequency Range (Hz)	50 ~ 20,000
Sensitivity Reduction (dB)	-3@f=1.0KHz, 1Pa Vs=1.5VDC to 1.0VDC
S/N Ratio (dBA)	70
Dimension (mm)	Φ14.0xH6.5

High S/N R-Φ14.0x6.5

KEIG6535TB-KM1

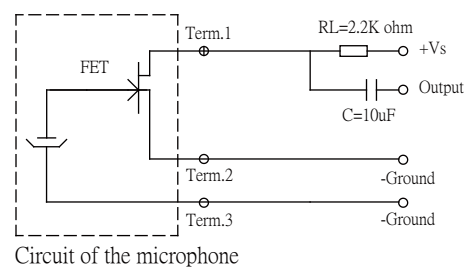


Dimension



Tol: ± 0.5 Unit: mm

Schematic Diagram



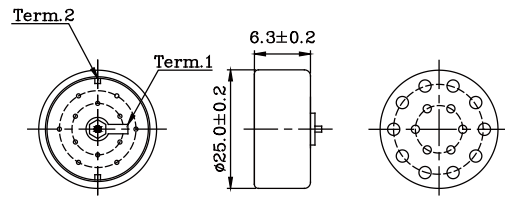
Standard Voltage (VDC)	1.5
Max. Operating Voltage (VDC)	10.0
Max. Current Consumption (mA)	0.5@Vs=1.5VDC> RL:2.2K ohm
Sensitivity (dB)	-35 ± 3
Impedance (Ω)	2.2K
Frequency Range (Hz)	50 ~ 20,000
Sensitivity Reduction (dB)	-3@f=1.0KHz, 1Pa Vs=1.5VDC to 1.0VDC
S/N Ratio (dBA)	70
Dimension (mm)	Φ14.0xH6.5

High S/N R-Φ25.0x6.3

KEIG6334TB-KN



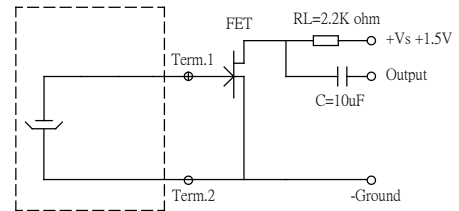
Dimension



Tol: ± 0.5 Unit: mm

Standard Voltage (VDC)	1.5
Max. Operating Voltage (VDC)	10.0
Max. Current Consumption (mA)	0.5@Vs=1.5VDC>RL=2.2K ohm
Sensitivity (dB)	-34 ± 3
Impedance (Ω)	2.2K
Frequency Range (Hz)	50 ~ 20,000
Sensitivity Reduction (dB)	-3@f=1.0KHz, 1Pa, Vs=1.5VDC to 1.0VDC
S/N Ratio (dBA)	70
Dimension (mm)	Φ25.0xH6.3

Schematic Diagram



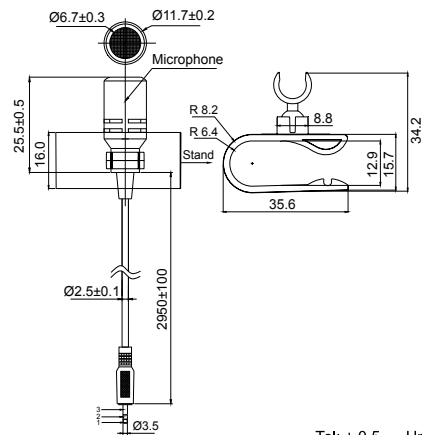
Electret Condenser Microphone

Unidirectional-Handsfree

KEIG4537WFL-3KL

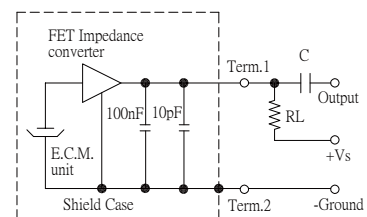


Dimension



Tol: ± 0.5 Unit: mm

Schematic Diagram

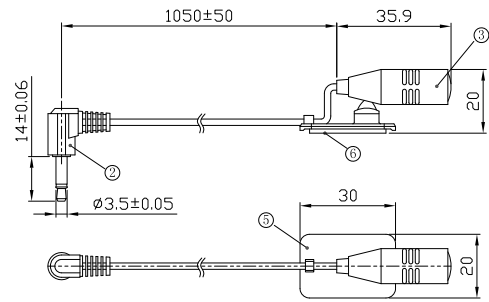


Unidirectional-Handsfree

KECG1050L



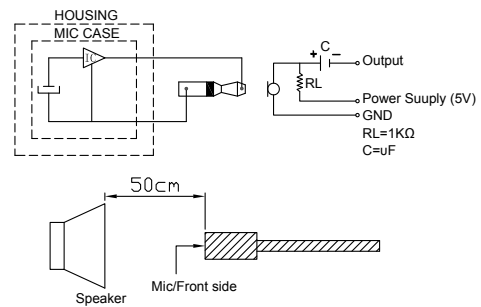
Dimension



Tol: ± 0.5 Unit: mm

Standard Voltage (VDC)	5.0
Max. Operating Voltage (VDC)	10.0
Max. Current Consumption (mA)	10@Vs=3.0VDC> RL:2.2K ohm
Sensitivity (dB)	-43.5 ± 4
Impedance (Ω)	1.0K
Frequency Range (Hz)	100 ~ 5,000
Sensitivity Reduction (dB)	-3@f=1.0KHz, 1Pa Vs=3.0VDC to 2.0VDC
S/N Ratio (dBA)	56

Schematic Diagram

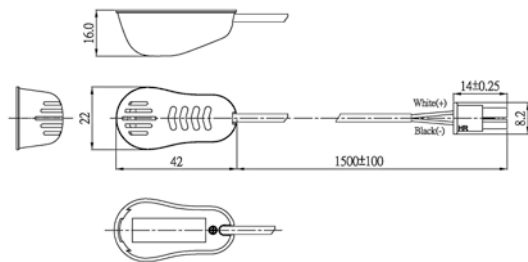


Unidirectional-Handsfree

KEAG1500L



Dimension



Tol: ± 0.5 Unit: mm

Standard Voltage (VDC)	2.0
Max. Operating Voltage (VDC)	10.0
Max. Current Consumption (mA)	0.5@Vs=3.0VDC> RL:2.2K ohm
Sensitivity (dB)	-42 ± 3
Impedance (Ω)	2.2K
Frequency Range (Hz)	10~ 10,000
Sensitivity Reduction (dB)	-3@f=1.0KHz, 1Pa Vs=3.0VDC to 2.0VDC
S/N Ratio (dBA)	60

Schematic Diagram

