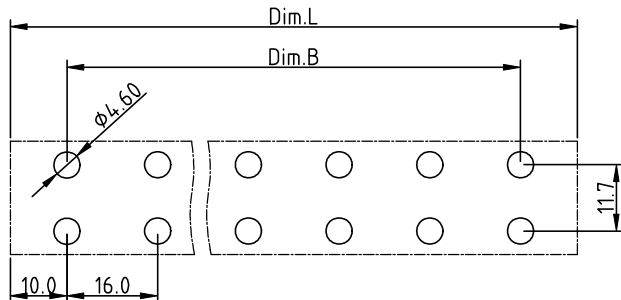
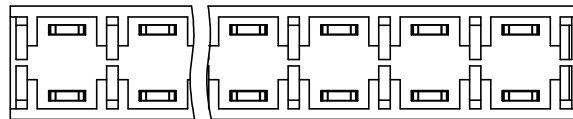
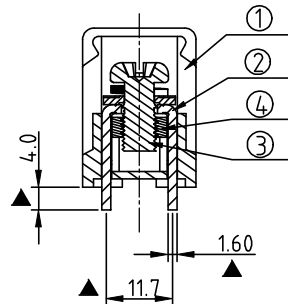
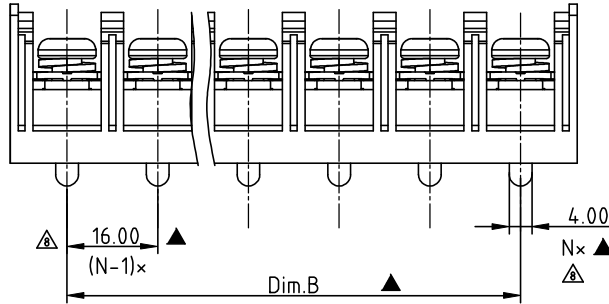
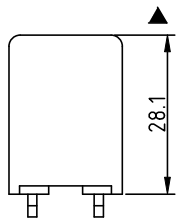
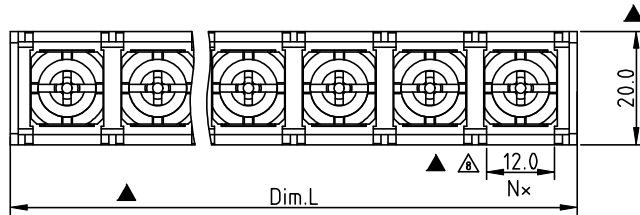


RoHS Compliant



P.C.B LAYOUT (Top View)

N= Number of poles
 Dim.B= (N-1)x16.0
 Dim.L= (N-1)x16.0+20.0

POLE	2P~6P	7P~10P
Dim.B	±0.40	±0.50
Dim.L	±0.40	±0.50

REV.	SIGN	DATE	DESCRIPTION	APPROVER
C	△	11/10'10	Current is changed from 75A to 65A	Aaron
	△	11/10'10	Wire range is changed from 10-4 AWG to 10-6 AWG	Aaron
	△	11/10'10	Add is cULus Mark	Aaron
D	△	12/12'12	Change the screw plating specification	Jacky
	△	12/12'12	Change the dimensional tolerance	Jacky
E	△	07/17'18	Add the RoHS Compliant, Replace the drawing frame.	Guoxue
	△	07/17'18	Add the TUV, Update TUV parameters	Guoxue
	△	07/17'18	Update the drawing & Add the critical dimension	Guoxue
	△	07/17'18	Increase the number of pages & Lug termination information	Guoxue
	△	07/17'18	Add "With Lug Termination"	Guoxue
	△	07/17'18	Add wave soldering temperature: 260°C±5°C/5 Sec	Guoxue

THIS IS CAD DRAWING, DO NOT REVISE MANUALLY!!!

- △ MATERIALS ELECTRICAL: cULus / TUV
- △ RATED VOLTAGE & CURRENT: 600 V, 65A △ 600V, 67A (Refer to EN 60947-7-1)
- WITHSTAND VOLTAGE: AC 3000 V/Min
- △ RATED IMPULSE WITHSTAND VOLTAGE(UIMP): AC4000 V/Min
- INSULATION RESISTANCE: 1000 MΩ OR MORE AT DC 500 V
- △ OPERATING TEMPERATURE RANG: -40 °C ~ +115°C/ -40 °C ~ +105°C
- △ Wave soldering temperature: 260°C±5°C/5 Sec
- SCREW TORQUE VALUE: 26 Lb-in. △△
- WIRE RANGE: 10 - 6 AWG (With Lug Termination)
- 1) BODY: THERMOPLASTICS, UL94-V0 BLACK
- 2) TERMINAL: BRASS, 1.6t,
- △ 3) TERMINAL SCREWS WITH WASHER: STEEL, M6.0
- 4) TERMINAL NUT: STEEL Ni PLATED M6.0

△ APPROVAL: cULus △
 △ Critical dimension: ▲

YK 901xx0xx00G

- NO. OF POLES: 02: 2 POLES, 03: 3 POLES, 04: 4 POLES, ..., 10: 10 POLES
- MARK: 0: "@ " MARK, 1: "ANY" MARK
- TERMINAL & SCREW PLATED: 0: TERMINAL & SCREW: G/F, 1: TERMINAL: G/F, SCREW: Zinc, 2: TERMINAL: Sn, SCREW: G/F, 3: TERMINAL: Sn, SCREW: Zinc
- RoHS compliant (lead<4%) in copper Alloy

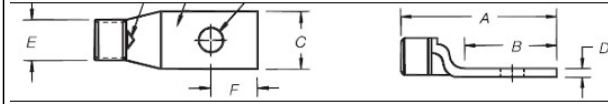
Amphenol ANYTEK				CUSTOMER COPY	
ALL RIGHTS RESERVED. REPRODUCTION OR ISSUE TO THIRD PARTIES IN ANY FORM WHATSOEVER IS NOT PERMITTED WITHOUT WRITTEN AUTHORITY FROM THE PROPRIETOR. PROPERTY OF ANYTEK TECHNOLOGY CO., LTD					
TITLE		YK901 W/o cover and W/o flange SERIES			
PART NO.		YK901xx0xx00G		DWG NO. 8YK0002-901	
APPROVED	CHECKED	DESIGNED	DRAWN	CUST NO.	
		Guoxue 2018.07.17	Guoxue 2018.07.17		
				SHEET: 01/02 △	
				UNIT: mm SCALE: NONE REV.: E	
				Tolerance X. ±0.50 X.X ±0.30 X.XX ±0.10 X° ±1°	


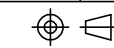
RoHS Compliant

Rev.	SIGN	DATE	DESCRIPTION	APPROVER
	—			
THIS IS CAD DRAWING, DO NOT REVISE MANUALLY!!!				

△
Lug termination information(接线端子信息)

Object/Part No.	Manufacturer/trademark	Type/model	Standard	Mark(s) of conformity
Lug termination	ABB (China)co.LTD	54105 for 6AWG 54130 for 8AWG 256-30695-1352 for 10 AWG	---	Test with appliance

Lug termination information							
	Dimensions(in.)						
Model	Screw	A	B	C	D	E	F
54105	1/4	1.20	0.53	0.44	0.07	0.31	7/32
54130	1/4	1.23	0.61	0.45	0.07	0.25	1/4
256-30695-1352	1/4	1.36	0.68	0.41	0.05	0.20	1/4

				CUSTOMER COPY <small>ALL RIGHTS RESERVED. REPRODUCTION OR ISSUE TO THIRD PARTIES IN ANY FORM WHATSOEVER IS NOT PERMITTED WITHOUT WRITTEN AUTHORITY FROM THE PROPRIETOR. PROPERTY OF ANYTEK TECHNOLOGY CO., LTD</small>		
TITLE	YK901 W/o cover and W/o flange SERIES					
PART NO.	YK901xx0xx00G	DWG NO.	8YK0002-901			
APPROVED	CHECKED	DESIGNED	DRAWN	CUST NO.	Tolerance	
		Guoxue 2018.07.17	Guoxue 2018.07.17		X. ±0.50	
					UNIT: mm	X.X ±0.30
					SCALE: NONE	X.XX ±0.10
				SHEET: 02/02 △	REV.: E	X° ±1°