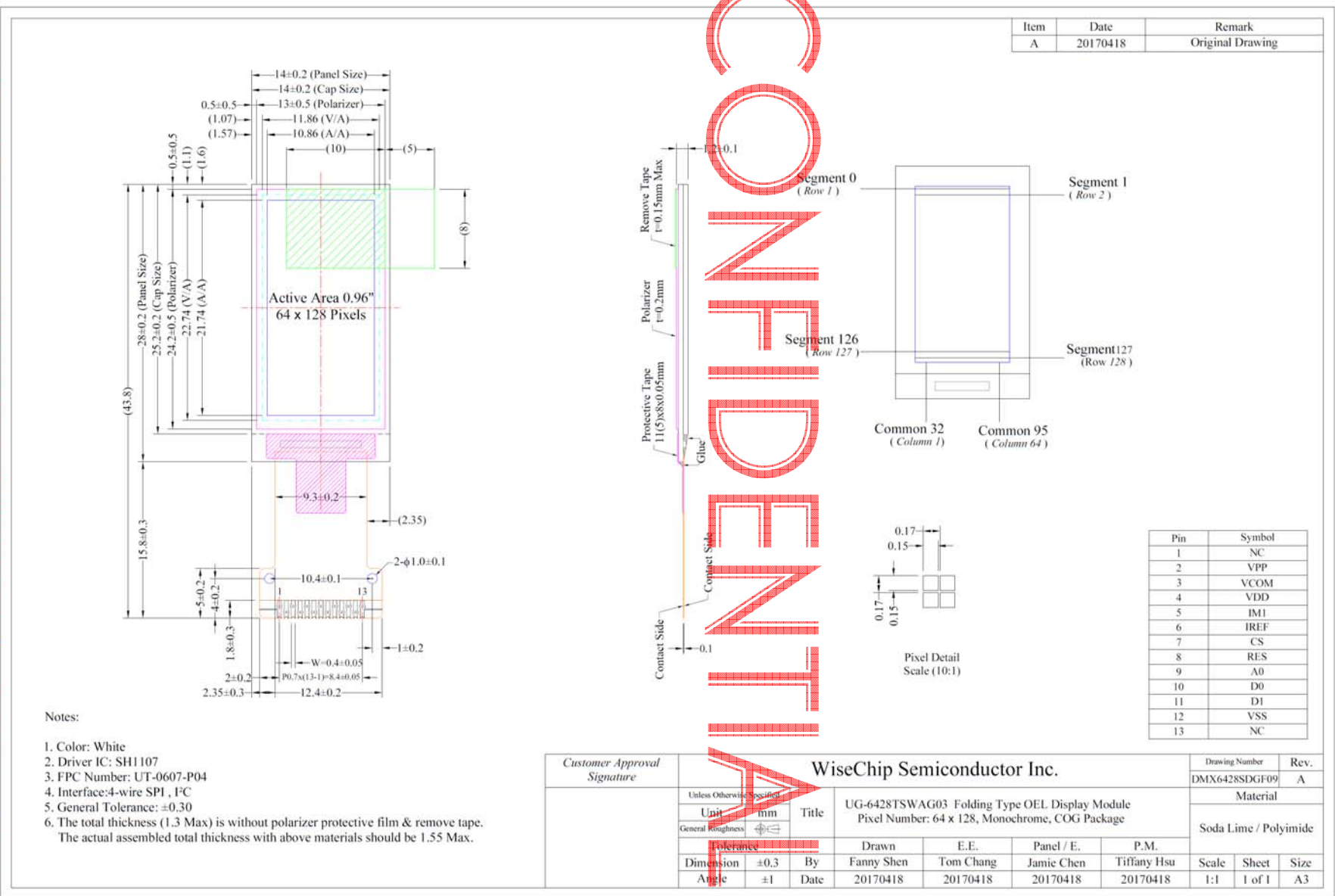


1.4 Mechanical Drawing



Notes:

1. Color: White
2. Driver IC: SH1107
3. FPC Number: UT-0607-P04
4. Interface: 4-wire SPI, 1°C
5. General Tolerance: ±0.30
6. The total thickness (1.3 Max) is without polarizer protective film & remove tape.
The actual assembled total thickness with above materials should be 1.55 Max.

Customer Approval Signature		WiseChip Semiconductor Inc.				Drawing Number	Rev.
		UG-6428TSWAG03 Folding Type OEL Display Module Pixel Number: 64 x 128, Monochrome, COG Package				DMX6428SDGF09	A
Unit: mm		Title				Material	
General Roughness						Soda Lime / Polyimide	
Tolerance		Drawn	E.E.	Panel / E.	P.M.		
Dimension	±0.3	By	Fanny Shen	Tom Chang	Jamie Chen	Tiffany Hsu	Scale Sheet Size
Angle	±1	Date	20170418	20170418	20170418	20170418	1:1 1 of 1 A3

The drawing contained herein is the exclusive property of WiseChip. It is not allowed to copy, reproduce and/or disclose in any formats without permission of WiseChip.