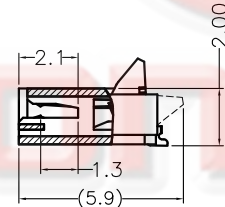
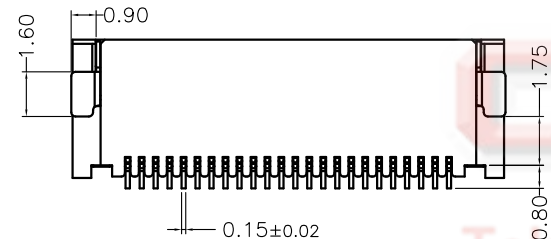
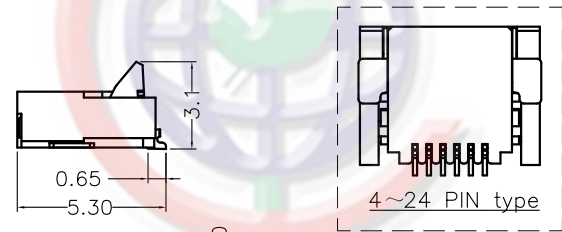
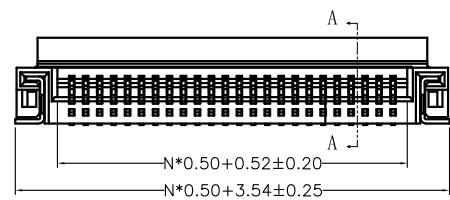
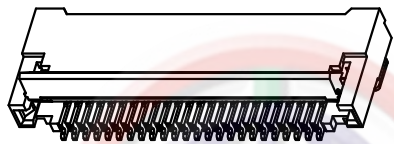
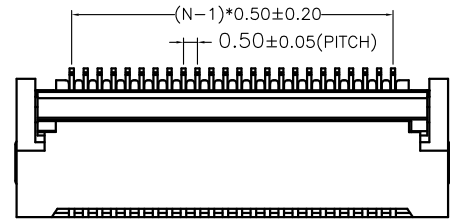


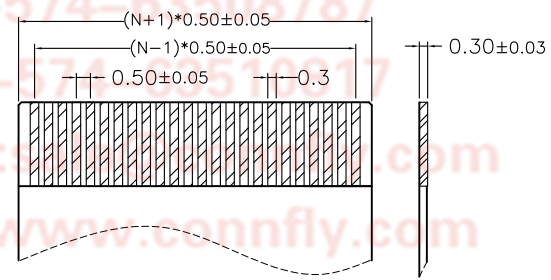
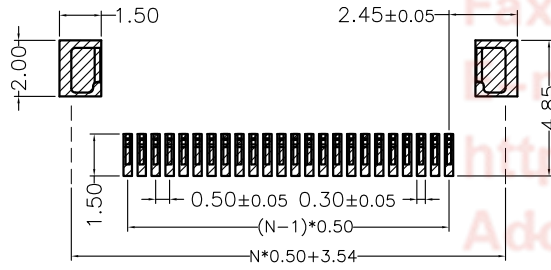
The information provided herein is from CONNELY Electronic Co., Ltd. and is confidential. Any disclosure to a party other than the recipient is prohibited. The intellectual properties and its rights contained herein, including but not limited to, trademarks, patents, copyrights, trade secrets, and technical know-how, are owned exclusively by CONNELY or its affiliates. Unauthorized use of this information in any format or manner. CONNELY may enforce its intellectual property rights at its own discretion; failures or delays to exercise such rights does not constitute a waiver of such rights.

1                      2                      3                      4                      5                      6                      7                      8

REV.	DESCRIPTION	DRAWN	CHECKED	APPROVED
A	NEW RELEASE	JLZ 06/07/18'		



SECTION A-A



APPLICABLE FFC

NOTES:

- MATERIAL
  - INSULATOR:THERMOPLASTIC(UL 94V-0).
  - CONTACT: COPPER ALLOY.
- SPECIFICATION
  - TEMPERATURE:-25°C ~ +85°C.
  - CONTACT RESISTANCE:30mΩ max.
  - INSULATION RESISTANCE:100MΩ min.
  - DIELECTRIC WITHSTANDING VOLTAGE:AC 100V PER MINUTE.
  - CURRENT RATING: 0.5A AC/DC
  - VOLTAGE RATING: 50V AC/DC
- PRODUCT NUMBER CODE:
 

DS1020-24- X X X X X

- PACKING TYPE
- B: Tube
- R: Tape on reel
- CONTACT PLATING
- T1: Matt tin
- 8: Gold flash
- COVER COLOR
- B: Black
- HOUSING COLOR
- V: Ivory
- No. OF CONTACTS
- 04~60

RECOMMEND PCB LAYOUT(TOLERANCE=±0.05)

GENERAL TOLERANCE		ANGLE TOLERANCE	
X.	±0.60	X.	±5°
.X	±0.38	.X	±3°
.XX	±0.25	.XX	±2°
DRAWING TYPE		CUSTOMER	
SCALE		1:1	SHEET 1 OF 1
DRAWING NO.		C-DS1020-24-XXXXX-A	

PROJECTION	TITLE
	0.5mm Pitch H=2.0mm ZIF Easy-on FPC Connector
UNITS	mm
SHEET SIZE	A4
SERIES	DS1020-24 SERIES

**晨翔电子有限公司**  
**CONNFLY CONNELY ELECTRONIC CO. LTD**

1                      2                      3                      4                      5                      6                      7                      8