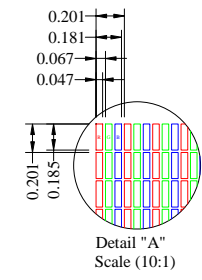
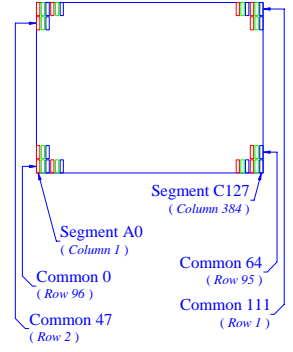
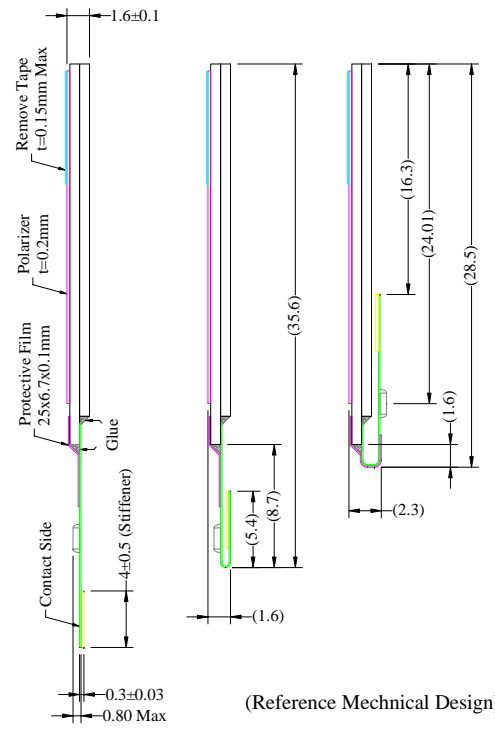
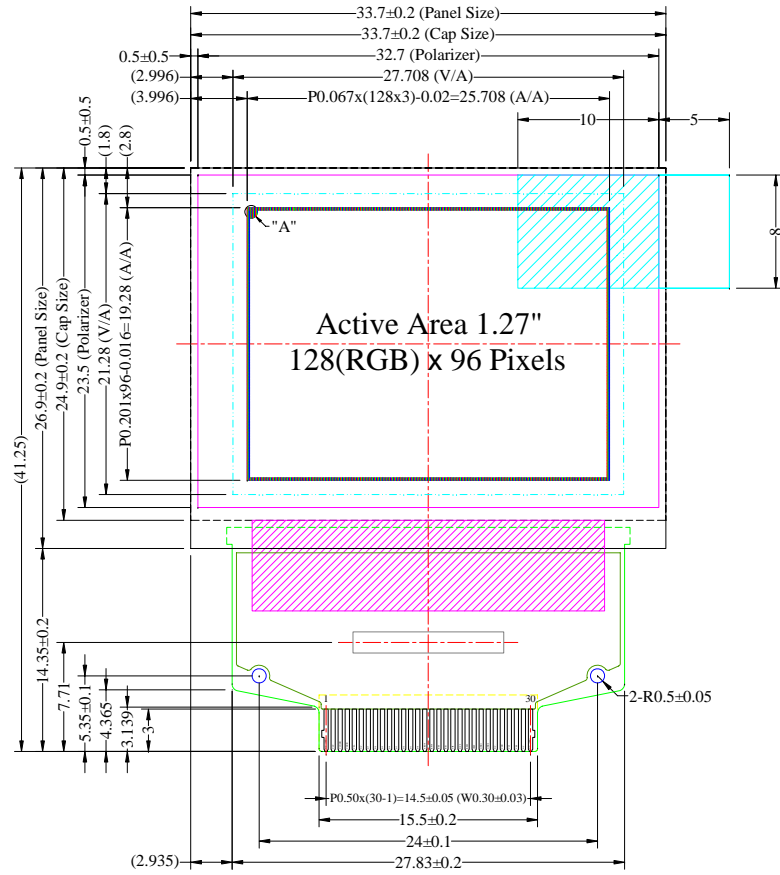


Item	Date	Remark
A	20080815	Original Drawing



Pin	Symbol
1	N.C. (GND)
2	VCC
3	VCOMH
4	VDDIO
5	VSL
6	N.C.
7	D7
8	D6
9	D5
10	D4
11	D3
12	D2
13	D1
14	D0
15	E/RD#
16	R/W#
17	BS0
18	BS1
19	CS#
20	D/C#
21	RES#
22	IREF
23	GPIO1
24	GPIO0
25	N.C.
26	VDD
27	VCI
28	VSS
29	N.C.
30	N.C. (GND)

Notes:

1. Driver IC: SSD1351
2. Die Size: 10700um x 1500um
3. COF Number: SSD1351U3
4. Interface: 8-bits 68XX/80XX Parallel, 3-/4-wire SPI
5. General Tolerance: ±0.30
6. The total thickness (1.70 Max) is without polarizer protective film & remove tape. The actual assembled total thickness with above materials should be 1.95 Max.

Customer Approval Signature	<b>WiseChip Semiconductor Inc.</b>						Drawing Number	Rev.		
	UG-2896GDEAF11 Folding Type OEL Display Module Pixel Number: 128(RGB) x 96, 262144 Colors, COF Package						DFE2896CNCNF13	A		
							Material		Soda Lime / Polyimide	
	Unless Otherwise Specified		Title	Drawn	E.E.	Panel / E.	P.M.	Scale	Sheet	Size
Unit	mm	By		Humphrey Lin	Albert Lin	Ivy Lo	Cherry Lin	1:1	1 of 1	A3
General Roughness	Ⓢ	Date		20080815	20080815	20080815	20080815			
Tolerance										
Dimension	±0.3									
Angle	±1									