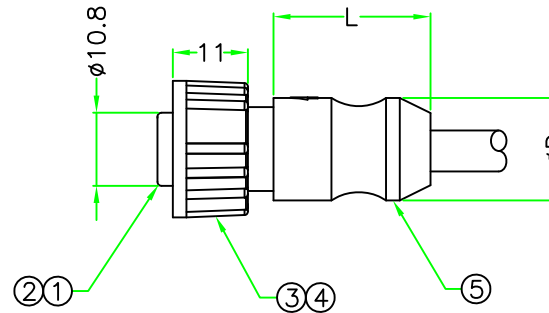
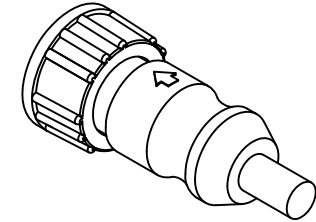
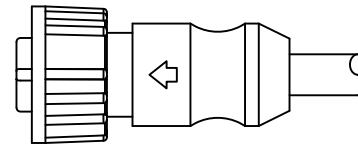
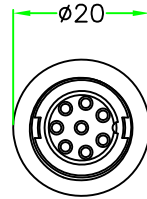
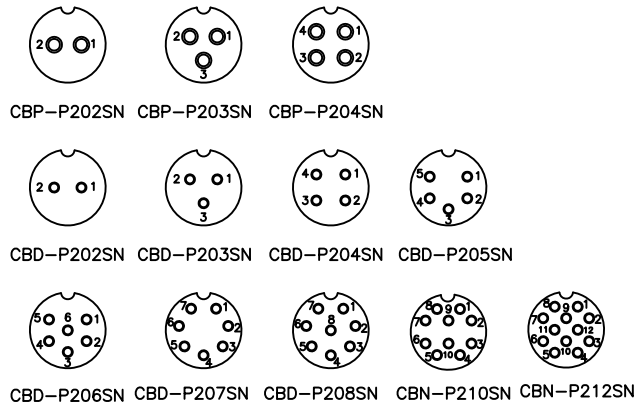


RoHS

| REV. | DESCRIPTION | DATE |
|------|-------------|-------------|
| A | ISSUE | May/12/2006 |
| | | |
| | | |



OVERMOLD :
 22-135 : L=24.0 , D=Ø15.0
 98-135 : L=32.0 , D=Ø16.5



| | | | | | | | |
|-----|-----------|---------------------------------------|-------|------|------------------------|--|---|
| 5 | OVERMOLD | PVC or PU | BLACK | 1 | 22-135-Nx 98-135-Nx | HOLIN[®] HTP ASIA TECHNOLOGY CO., LTD. 禾凌科技股份有限公司 | UNIT: mm SCALE 1:1 TITLE : CIRCULAR B SIZE SCREW TYPE MOLDED CABLE |
| 4 | SCREW NUT | NYLON+GF | BLACK | 1 | B-SN (48-135) | | |
| 3 | O-RING | NBR | BLACK | 1 | | P/N: CBx-P2xxSN DR. Jack CH. ERJE | |
| 2 | CONTACT | Brass, Female Pin , 6u" Gold Plating. | | N | | | |
| 1 | CONNECTOR | Female Connector Insert, NYLON+GF. | BLACK | 1 | 20-135-Nx | DWG.NO: CBx-P2xxSN AP. | |
| No. | PART NAME | DESCRIPTION | COLOR | Q'TY | REMARKS | | |

UNLESS OTHERWISE SPECIFIED TOLERANCES:
 x ±0.25 xx ±0.1
 xxx ±0.05 ANGLE ± 1°X
 REV. A SHEET 1/1