

NOTES: TYPICAL SPECIFICATIONS

1.0. ELECTRICAL DATA

- 1.1. FREQUENCY RANGE --- DC ... 4 GHz
- 1.2. IMPEDANC --- 50 Ohms
- 1.3. VSWR ---- < 1.35
- 1.4. DIELECTRIC WITHSTANDING VOLTAGE --- 750 Vrms
- 1.5. INSULATION RESISTANCE --- 1000 Mega-Ohms
- 1.6. CENTER CONTACT RESISTANCE --- 20.0 mini-Ohms
- 1.7. OUTER CONTACT RESISTANCE --- 10.0 mini-Ohms

2.0. MECHANICAL DATA

- 2.1. COUPLING METHOD --- SNAP-ON
- 2.2. DURABILITY (MATING/UNMATING) --- 100 Cycles
- 2.3. ENGAGEMENT FORCE --- 14 lbs max.
- 2.4. DISENGAGEMENT FORCE --- 14 lbs max.

REV.	DESCRIPTION	DRAWN/DATE	CHECK/DATE	APPROVED/DATE
B	1C,1D	2011/01/26	2011/01/26	2011/01/26

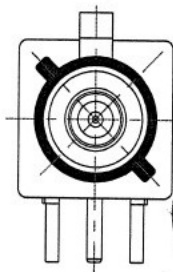
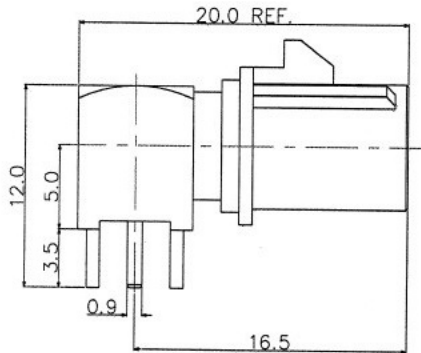
Order information:  
K \* 830-501NNT3  
CODE

CODE

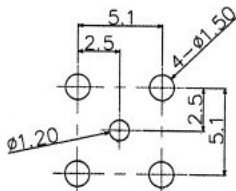
A		Black 9005 Radio without phantom supply
B		Cream white 9001 Radio phantom supply
C		Blue 5005 GPS
D		Bordeaux 4004 GSM cellular phone
E		Green 6002 TV1 / SDARS
F		Brown 8011 TV2 / SDARS
G		Grey 7031 Remote control keyless entry

CODE

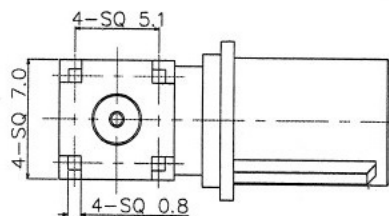
Violet 4003		QH
GPS for telematics and navigation		I
Beige 1001		K
Remote control parking heating		L
Curry 1027		M
Radio with IF		N
Carmine red 3002		Z
Not defined		
Pastel orange 2003		
Not defined		
Pastel green 6019		
Not defined		
Water blue 5021		
Neutral coding		



f-time  
2.2. MAR 2011  
Release



Recommend PCB LAYOUT



BOM

5	HOUSING	PA66	By Code Color	1	
4	REAR BODY	BRASS	NICKEL	1	
3	INSULATOR	TEFLON		2	
2	CENTER CONTACT	BRASS	GOLD	1	
1	JACK BODY	BARSS	NICKEL	1	
ITEM	ITEM NAME	MATERIAL	FINISH	Q'TY/EA	PART NUMBER

GENERAL TOLERANCE		ANGLE TOLERANCE	
X	±0.25	X	±3.0°
XX	±0.15	XX	±2.0°
XXX	±0.08	XXX	±1.0°

- UNLESS OTHERWISE SPECIFIED
- REMOVE ALL BURRS
  - BREAK ALL SHARP EDGES 0.2 MAX.
  - CHAMFER 1ST-3RD THREADS 45°
  - MACHINE SURFACE ROUGHNESS
  - DIMETERS ON CONJUGATE CENTERS TO BE CONCENTRIC WITHIN 0.2 TIRL
  - ALL DIMENSIONS ARE AFTER PLATING

MATERIAL	FINISH
SEE BOM	SEE BOM

DRAWN NEIL	DATE 01/26 2011
CHECKED	DATE
APPROVED	DATE
UNIT mm (INCHES)	SIZE A3
CUSTOMER DRAWING	SCALE 1:10

TECHNOLOGY INDUSTRIAL CO., LTD.	
TITLE <b>FAKRA PLUG R/A FOR PCB</b>	REV. C
SHEET 1 OF 1	SCALE 1:10
FILE NO. KR30-501NNT3-C	