

The information provided herein is from CONNFLY Electronic Co., Ltd. and is confidential. Any disclosure to a party other than the recipient is prohibited. The intellectual properties and its rights contained herein, including but not limited to, trademarks, patents, copyrights, trade secrets, and technical know-how, are owned exclusively by CONNFLY or its affiliates. Unauthorized use or modification is strictly prohibited. CONNFLY may enforce its intellectual property rights at its own discretion; failures or delays to exercise such rights does not constitute a waiver of such rights.

1 2 3 4 5 6 7 8

REV.	DESCRIPTION	DRAWN	CHECKED	APPROVED
A	NEW RELEASE	LL 23/06/05		LJC 23/06/05'
B	DRAWING UPDATE	JLZ 08/24/16'	HZW 08/24/16'	LJC 08/24/16'
E	DRAWING UPDATE	JLZ 06/21/19'		

NOTES:

1. SPECIFICATIONS

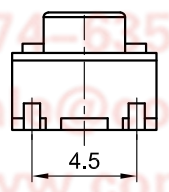
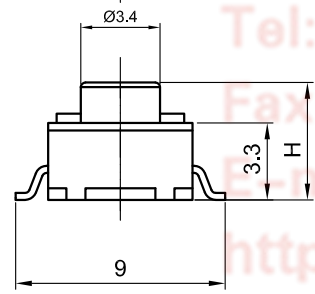
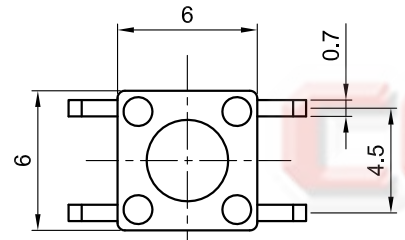
- Switch Function: Single Pole Single Throw
- Contact Rating: 50mA at 12Vdc
- Insulation Resistance: 100MΩ min.
- Contact Resistance: 100mΩ max.
- Operating Life: 100,00 cycles
- Stop Strength: Place The Switch Such That Vertical, A Static Load Of 3KgF Shall Be Applied In The Direction
- Operation Temperature Range: -25°C to +70°C

- Wave Soldering: Recommended Solder Temperature At 500°f(260°C)max. 5 Seconds, Subject To PCB 1.6mm Thickness.
- Hand Soldering: Use Soldering Iron Of 30 Watts, Controlled At 608°f(320°C) Approximately 2 Seconds.

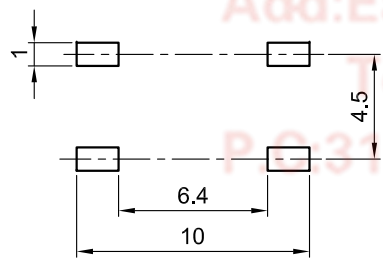
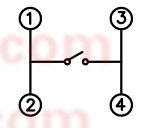
2. PRODUCT NUMBER CODE:

DS1042-03 - X X X X X X X - X

- Contact Plating
N/A Code: Silver plating
8: Gold plating
- Operating Life
5: 50000 cycles
10: 100000 cycles
20: 200000 cycles
- Operating Force
130: 130gf 160: 160gf
170: 170gf 250: 250gf
- Packing Type
A: Polybag
B: Tube
R: Tape & Reel
- Actuator Color
K: Black N: Brown
- Housing Color
K: Black N: Brown
- Profile Height(DIM. H)
1: 4.3mm 2: 5.0mm 3: 7.0mm
4: 7.3mm 5: 9.5mm 6: 13.0mm
7: 7.5mm 8: 8.0mm 9: 8.5mm
10: 12.0mm 11: 12.5mm 12: 17.0mm
13: 7.8mm 14: 9.0mm 15: 10.0mm
16: 11.0mm 17: 15.0mm 18: 5.3mm
- Size
1: 6mm*6mm



CIRCUIT DIAGRAM



Recommend PCB layout
Tolerance ±0.05

GENERAL TOLERANCE		ANGLE TOLERANCE		PROJECTION		TITLE	TACT SWITCH SMT TYPE 6mmX6mm					
X.	±0.60	X.	±5°	UNITS	mm	SERIES	DS1042-03 SERIES					
.X	±0.38	.X	±3°									
.XX	±0.25	.XX	±2°									
DRAWING TYPE		CUSTOMER		晨翔电子有限公司 CONNFLY CONNFLY ELECTRONIC CO. LTD								
SCALE		1:1							SHEET		1 OF 3	
DRAWING NO.		C-DS1042-03-1XXXXX-X-E										

晨翔电子有限公司
CONNFLY CONNFLY ELECTRONIC CO. LTD

1 2 3 4 5 6 7 8

The information provided herein is from CONNFLY Electronic Co., Ltd. and is confidential. Any disclosure to a party other than the recipient is prohibited. The intellectual properties and its rights contained herein, including but not limited to, trademarks, patents, copyrights, trade secrets, and technical know-how, are owned exclusively by CONNFLY or its affiliates. Unauthorized use or modification is strictly prohibited. CONNFLY may enforce its intellectual property rights at its own discretion; failures or delays to exercise such rights does not constitute a waiver of such rights.

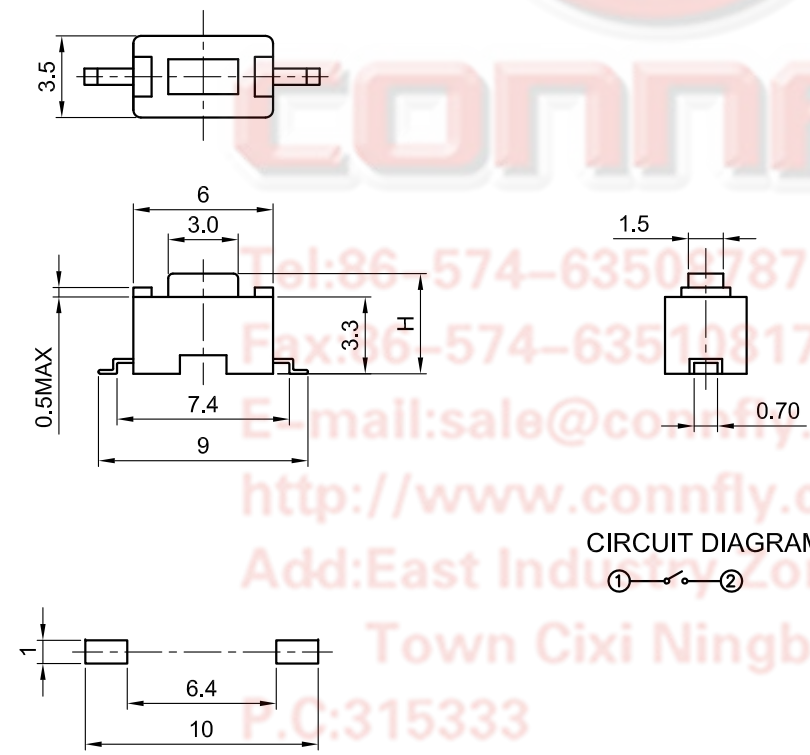
1 2 3 4 5 6 7 8

Dept	
Qty	
DC	1
ED	1
IE	1
ISO	1
PD	1
R&D	1
SD	1
QA	1
QC	1
QE	1

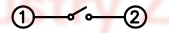
NOTES:

1. SPECIFICATIONS

- Switch Function: Single Pole Single Throw
- Contact Rating: 50mA at 12Vdc
- Insulation Resistance: 100MΩ min.
- Contact Resistance: 100mΩ max.
- Operating Life: 100,00 cycles
- Stop Strength: Place The Switch Such That Vertical, A Static Load Of 3Kgf Shall Be Applied In The Direction
- Operation Temperature Range: -25°C to +70°C



CIRCUIT DIAGRAM



Recommend PCB layout
Tolerance±0.05

REV.	DESCRIPTION	DRAWN	CHECKED	APPROVED
A	NEW RELEASE	LL 23/06/05		LJC 23/06/05'
B	DRAWING UPDATE	JLZ 08/24/16'	HZW 08/24/16'	LJC 08/24/16'
E	DRAWING UPDATE	JLZ 06/21/19'		

- Wave Soldering: Recommended Solder Temperature At 500°f(260°C)max. 5 Seconds, Subject To PCB 1.6mm Thickness.
- Hand Soldering: Use Soldering Iron Of 30 Watts, Controlled At 608°f(320°C) Approximately 2 Seconds.

2. PRODUCT NUMBER CODE:

DS1042-03 - X X X X X X X - X

- Contact Plating
N/A Code: Silver plating
8: Gold plating
- Operating Life
5: 50000 cycles
10: 100000 cycles
20: 200000 cycles
- Operating Force
130: 130gf 160: 160gf
170: 170gf 250: 250gf
- Packing Type
A: Polybag
B: Tube
R: Tape & Reel
- Actuator Color
K: Black N: Brown
- Housing Color
K: Black N: Brown
- Profile Height(DIM. H)
1: 4.3mm 2: 5.0mm 3: 7.0mm
4: 7.3mm 5: 9.5mm 6: 13.0mm
7: 7.5mm 8: 8.0mm 9: 8.5mm
10: 12.0mm 11: 12.5mm 12: 17.0mm
13: 7.8mm 14: 9.0mm 15: 10.0mm
16: 11.0mm 17: 15.0mm 18: 5.3mm
- Size
2: 3.5mm*6mm*9mm

GENERAL TOLERANCE		ANGLE TOLERANCE		PROJECTION		TITLE	TACT SWITCH SMT TYPE 3.5mmX6mm			
X.	±0.60	X.	±5°	UNITS	mm					
.X	±0.38	.X	±3°	SHEET SIZE	A4	SERIES	DS1042-03 SERIES			
.XX	±0.25	.XX	±2°			晨翔电子有限公司 CONNFLY CONNFLY ELECTRONIC CO. LTD				
DRAWING TYPE		CUSTOMER								
SCALE		1:1	SHEET	2 OF 3						
DRAWING NO.		C-DS1042-03-2XXXXXX-X-E								

1 2 3 4 5 6 7 8

The information provided herein is from CONNFLY Electronic Co., Ltd. and is confidential. Any disclosure to a party other than the recipient is prohibited. The intellectual properties and its rights contained herein, including but not limited to, trademarks, patents, copyrights, trade secrets, and technical know-how, are owned exclusively by CONNFLY or its affiliates. Unauthorized use or modification is strictly prohibited. CONNFLY may enforce its intellectual property rights at its own discretion; failures or delays to exercise such rights does not constitute a waiver of such rights.

1 2 3 4 5 6 7 8

REV.	DESCRIPTION	DRAWN	CHECKED	APPROVED
A	NEW RELEASE	LL 23/06/05		LJC 23/06/05'
B	DRAWING UPDATE	JLZ 08/24/16'	HZW 08/24/16'	LJC 08/24/16'
E	DRAWING UPDATE	JLZ 06/21/19'		

NOTES:

1. SPECIFICATIONS

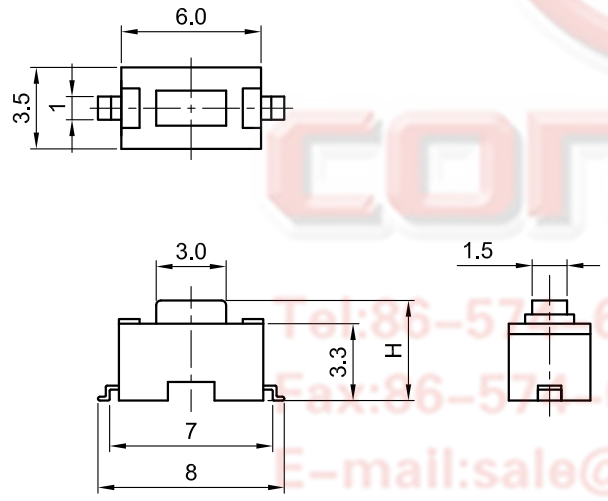
- Switch Function: Single Pole Single Throw
- Contact Rating: 50mA at 12Vdc
- Insulation Resistance: 100MΩ min.
- Contact Resistance: 100mΩ max.
- Operating Life: 100,00 cycles
- Stop Strength: Place The Switch Such That Vertical, A Static Load Of 3Kgf Shall Be Applied In The Direction
- Operation Temperature Range: -25°C to +70°C

- Wave Soldering: Recommended Solder Temperature At 500°F(260°C)max. 5 Seconds, Subject To PCB 1.6mm Thickness.
- Hand Soldering: Use Soldering Iron Of 30 Watts, Controlled At 608°F(320°C) Approximately 2 Seconds.

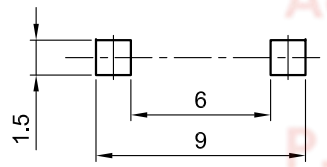
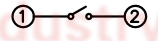
2. PRODUCT NUMBER CODE:

DS1042-03 - X X X X X X X - X

- Contact Plating
N/A Code: Silver plating
8: Gold plating
- Operating Life
5: 50000 cycles
10: 100000 cycles
20: 100000 cycles
- Operating Force
130: 130gf 160: 160gf
170: 170gf 250: 250gf
- Packing Type
A: Polybag
B: Tube
R: Tape & Reel
- Actuator Color
K: Black N: Brown
- Housing Color
K: Black N: Brown
- Profile Height(DIM. H)
1: 4.3mm 2: 5.0mm 3: 7.0mm
4: 7.3mm 5: 9.5mm 6: 13.0mm
7: 7.5mm 8: 8.0mm 9: 8.5mm
10: 12.0mm 11: 12.5mm 12: 17.0mm
13: 7.8mm 14: 9.0mm 15: 10.0mm
16: 11.0mm 17: 15.0mm 18: 5.3mm
- Size
3: 3.5mm*6mm*8mm



CIRCUIT DIAGRAM



Recommend PCB layout
Tolerance ±0.05

GENERAL TOLERANCE		ANGLE TOLERANCE	
X.	±0.60	X.	±5°
.X	±0.38	.X	±3°
.XX	±0.25	.XX	±2°
DRAWING TYPE	CUSTOMER		
SCALE	1:1	SHEET	3 OF 3
DRAWING NO.	C-DS1042-03-3XXXXXX-X-E		

PROJECTION	TITLE
	TACT SWITCH SMT TYPE 3.5mmX6mm
UNITS	mm
SHEET SIZE	A4
SERIES	DS1042-03 SERIES

晨翔电子有限公司
CONNFLY CONNFLY ELECTRONIC CO. LTD

1 2 3 4 5 6 7 8