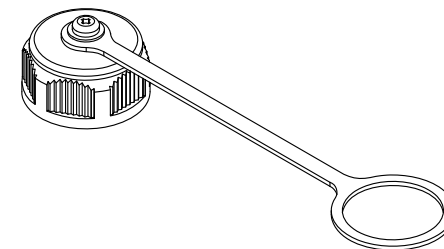
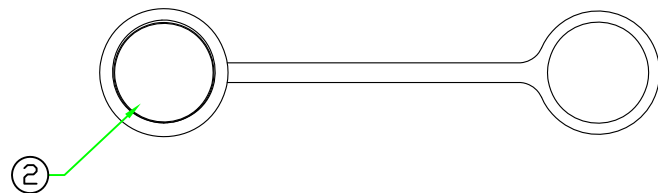
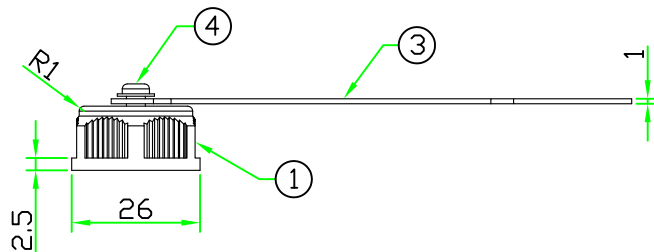
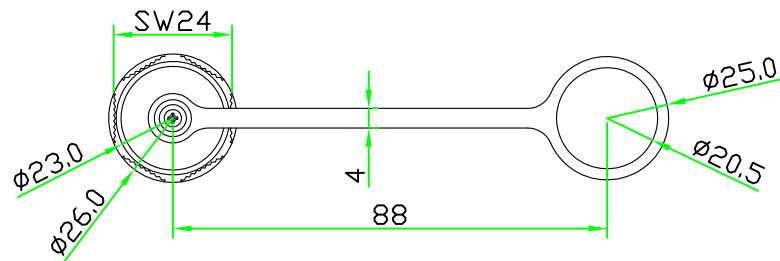
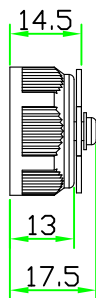
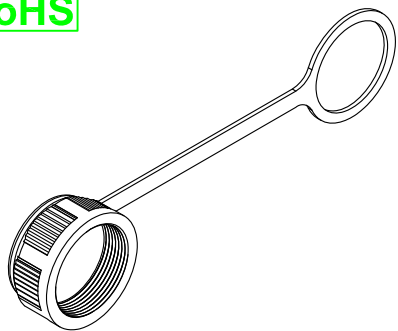


PROPRIETARY AND CONFIDENTIAL  
 THE INFORMATION CONTAINED IN THIS DRAWING IS THE SOLE PROPERTY OF HTP ASIA TECHNOLOGY CO., LTD. .  
 ANY REPRODUCTION IN PART OR AS A WHOLE WITHOUT THE WRITTEN PERMISSION OF HTP ASIA TECHNOLOGY CO., LTD. IS PROHIBITED.

RoHS



REV	DESCRIPTION	DATE
A	ISSUE	Mar/10/2009
A1	CHANGE P/N AND DWG.NO.	Feb/25/2014
A2	ADD NOTES	Mar/17/2014

**NOTE:**  
 Maximum panel thickness:  
 (適用面板最大厚度)  
 C size series:2mm  
 RJ45/USB/HDMI series:4mm  
 C size front mount not available  
 (不適用C size後鎖式板端接頭)

**HOLIN® HTP ASIA TECHNOLOGY CO., LTD.**  
 禾凌科技股份有限公司

No.	PART NAME	DESCRIPTION	COLOR	Q'TY	REMARKS	REV.	SHEET	DWG.NO:	DR.
4	SCREW	STAINLESS STEEL.	BLACK	1	CCP-CAP-S3x6B	⊕	UNIT: mm	TITLE : WATERPROOF CAP SCREW TYPE WITH PLASTIC CHAIN FOR RJ45 ,C SIZE ,USB PANEL CONNECTOR	DR. Patty
3	CHAIN	PLASTIC RUBBER	BLACK	1	CAP CHAIN-B (59-135)	SCALE	1:1.5		CH. ERIC
2	GASKET	PLASTIC RUBBER	BLACK	1		UNLESS OTHERWISE SPECIFIED TOLERANCES:		P/N: CCx-WCAP-MB	
1	SCREW CAP	NYLON+GF.	BLACK	1	CCP-MCAP (70-135-N4)	x ±0.25 xx ±0.1 xxx ±0.05 ANGLE ±1°x			
						A2	1/1	CCx-WCAP-MB	AP.