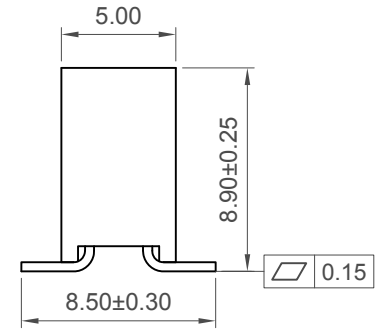
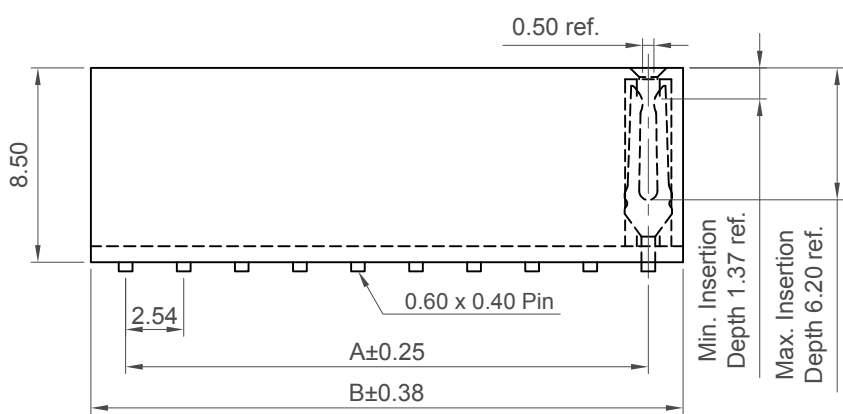
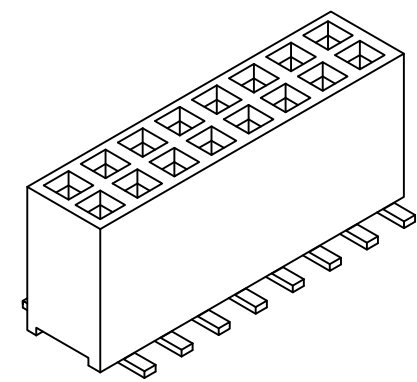
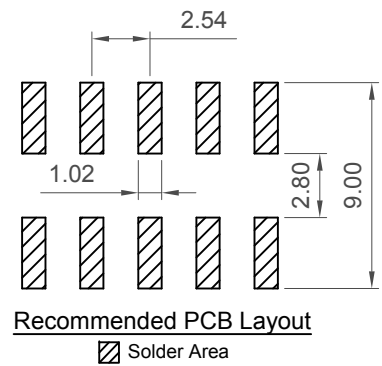
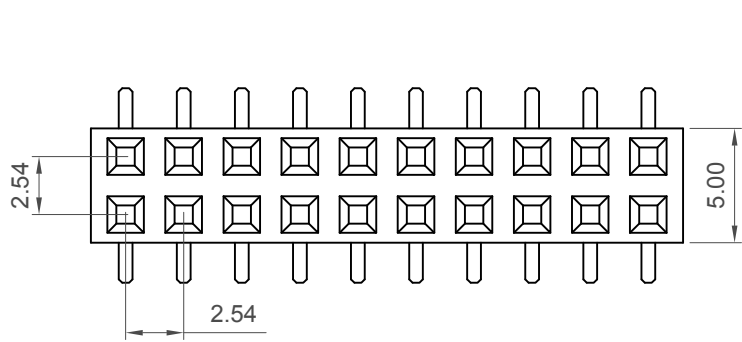


H  
G  
F  
E  
D  
C  
B  
A



**Specifications**

**Material**  
 Contact: Copper Alloy  
 Insulator Material:  
 Standard: Polyamide, Nylon 6T, UL 94V-0  
 Options: Polymer, LCP, UL 94V-0

**Plating**  
 See Ordering Grid

**Electrical**  
 Current Rating: 3 Amp per pin  
 Insulator Resistance: 1000 MΩ min.  
 Contact Resistance: 20 mΩ max.  
 Dielectric Withstanding: AC 600 V

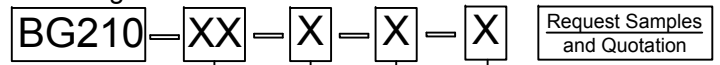
**Environmental & Mechanical**  
 Operating Temperature: -40° to +105°C

**Soldering Process:**  
 Nylon 6T (Standard) -  
 IR Reflow: 260°C for 10 sec.  
 Wave: 230°C for 5-10 sec.  
 Manual Solder: 350°C for 3-5 sec  
 LCP (Option) -  
 IR Reflow: 260°C for 10 sec.  
 Wave: 250°C for 5-10 sec.  
 Manual Solder: 350°C for 3-5 sec

**Mates with (Subject to pin length)**  
 BG025 BG040 BG041 BG045  
 BG050 BG065 BG066 BG070  
 BG085

No. of Contacts	Dimension	
	A	B
4	2.54	5.08
6	5.08	7.62
8	7.62	10.16
10	10.16	12.70
12	12.70	15.24
14	15.24	17.78
16	17.78	20.32
18	20.32	22.86
20	22.86	25.40
22	25.40	27.94
24	27.94	30.48
26	30.48	33.02
28	33.02	35.56
30	35.56	38.10
32	38.10	40.64
34	40.64	43.18
36	43.18	45.72
38	45.72	48.26
40	48.26	50.80
42	50.80	53.34
44	53.34	55.88
46	55.88	58.42
48	58.42	60.96
50	60.96	63.50
52	63.50	66.04
54	66.04	68.58
56	68.58	71.12
58	71.12	73.66
60	73.66	76.20
62	76.20	78.74
64	78.74	81.28
66	81.28	83.82
68	83.82	86.36
70	86.36	88.90
72	88.90	91.44
74	91.44	93.98
76	93.98	96.52
78	96.52	99.06
80	99.06	101.60

**Ordering Grid**



**No. of Contacts**  
 04 to 80

**Packing Options**

**Contact Plating**

**A = Gold Flash All Over (Standard)**  
**B = Selective Gold Flash Contact Area /Tin On Tail**  
**C = Tin All Over**  
**G = 10μ" Gold Contact Area/Tin On Tail**  
**I = 30μ" Gold Contact Area/Tin On Tail**

**C = Tape and Reel with Film (Standard)**

**B = Tape and Reel with Cap**  
**D = Tube**  
**E = Tube with Cap**  
**F = Tube with Film**

**Insulator Material**

**N = Nylon 6T (Standard)**  
**L = LCP**

Part Number BG210		Product Description 2.54mm Pitch Socket, Dual Row, Surface Mount, Vertical	
Drawing Date 30th October 2006			
By CC		Tolerances (Except as Noted)	Units: Metric (mm)
Detail BG210 C PCN		Length X ± 0.30 X.X ± 0.20 X.XX ± 0.15 X.XXX ± 0.10	Angle X° ± 5° X.X° ± 2° X.XX° ± 1° X.XXX° ± 0.5°
Revision C2		3rd Angle Projection	
Date 28/11/17			

This drawing is confidential and copyright of Global Connector Technology, Ltd (GCT). This drawing must not be copied or disclosed without written consent. E & OE



Not to Scale	Drawn By LYH	Sheet No. 1/1
--------------	-----------------	------------------