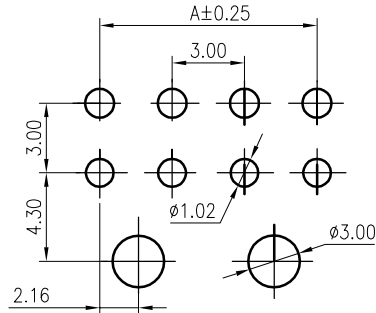
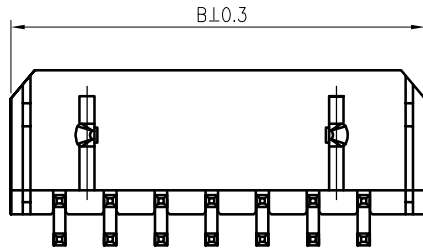
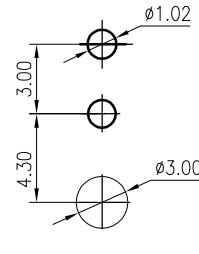


RoHS

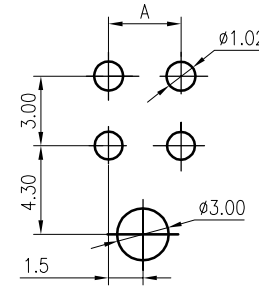
REV	Date	Description



2*4P~2*12P P.C.B Layout



2*1P P.C.B Layout



2*2P~2*3P P.C.B Layout

SPECIFICATIONS

1. Current rating: 5A AC, DC
2. Voltage rating: 250V AC,DC
3. Temperature range: -40°C ~ +105°C
4. Insulation resistance: 1000MΩ Min.
5. Withstanding voltage: 1500V AC/ minute.
6. Contact resistance: 10mΩ Max.

Material:

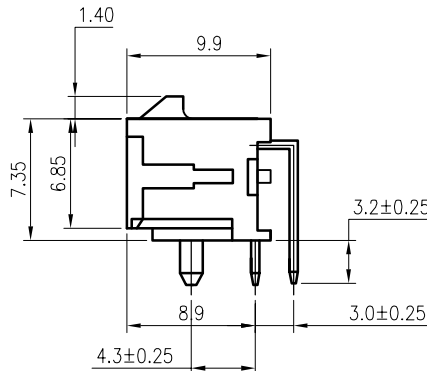
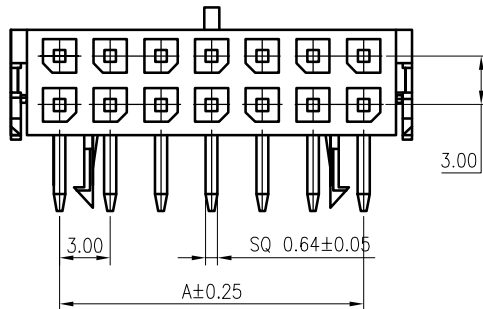
Insulator: PA46 UL 94V-0

Contact: Brass

Plating: Tin plated or gold flash over nickel

Circuits: 2*1~2*12

Mate with SH3002 series dual row housing



HOW TO ORDER

SH3002-W-D-XX- R T
1 2 3 4 5 6

- | | |
|--|--|
| 1. Series No. :
SH3002 | 5. Wafer Function:
S: Straight |
| 2. Product:
H: Housing
W: WAFER
T: Terminal | R: Right Angle
A: SMT Straight
B: SMT Right Angle
C: SMT Straight
D: SMT Right Angle |
| 3. Row Type:
S: Single Row
D: Dual Row | With Soldering Retention Clip
With Soldering Retention Clip
With Soldering Fitting Nail
With Soldering Fitting Nail |
| 4. Contact No. :
02-12P (Single Row)
02-24P (Dual Row) | D: SMT Right Angle
T: Tin |

PIN NO.	DIMENSIONS	
	A	B
2*1P	--	6.65
2*2P	3.00	9.65
2*3P	6.00	12.65
2*4P	9.00	15.65
2*5P	12.00	18.65
2*6P	15.00	21.65
2*7P	18.00	24.65
2*8P	21.00	27.65
2*9P	24.00	30.65
2*10P	27.00	33.65
2*11P	30.00	36.65
2*12P	33.00	39.65

JIA YI ELECTRONIC CO., LTD

UNIT

TITIE

CUSTOMER P.Number

J.Y NUMBER

REV.

mm

SH3002-W-D-XX-RT

1

DATE:2023/02/21

DRAWING.

APPROVED

SCALE

CUSTOMER Name

DRAWN NO.

Page No

You kai Yin

Nick

NOT

1 of 1

1

2

3

4

5

6

7

8