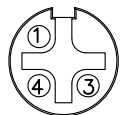
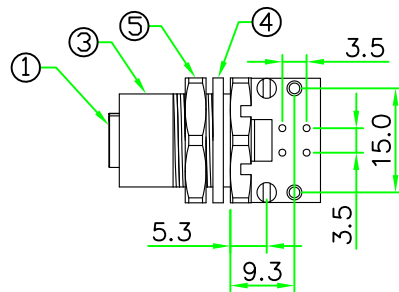
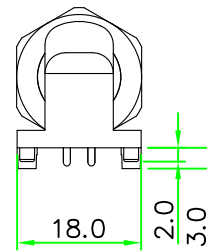
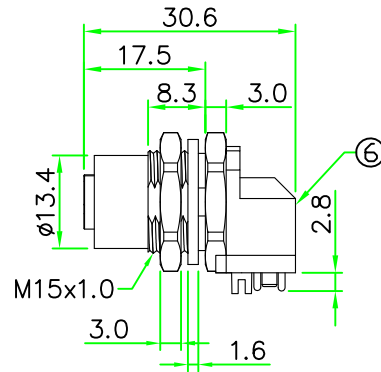
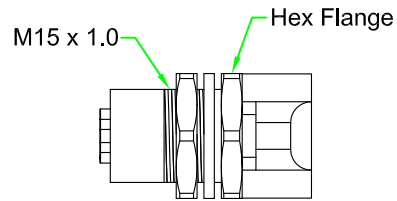
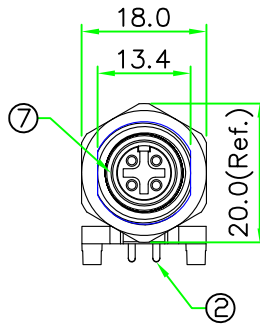
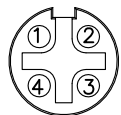


Recommended Panel Cut-out

**RoHS**  
**IP66~68**



A12D-M203HPRR



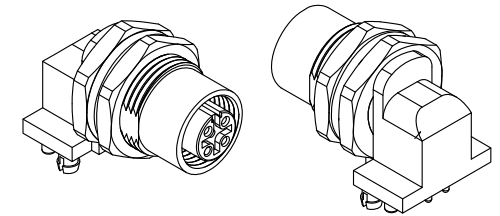
A12D-M204HPRR



A12D-M205HPRR

PIN ASSIGNMENT FRONT VIEW (前視圖)

REV.	DESCRIPTION	DATE
A	ISSUE	Nov/13/2015



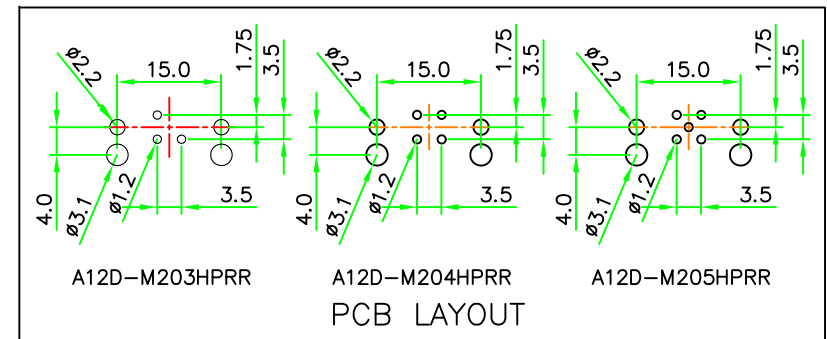
NOTES:

1. ELECTRICAL CHARACTERISTICS:

- CURRENT RATING: 5A
- TEMPERATURE RANGE: -25°C TO +85°C
- DIELECTRIC WITHSTANDING VOLTAGE: 500V AC FOR ONE MINUTE

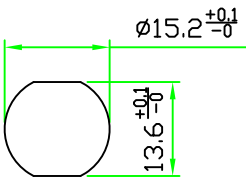
2. HOW TO ORDER: A12D-M2XXHPRR

- 03 - 3 PIN
- 04 - 4 PIN
- 05 - 5 PIN

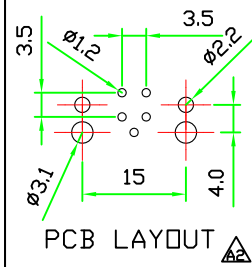
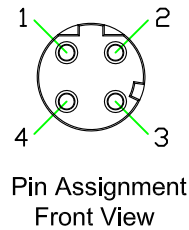
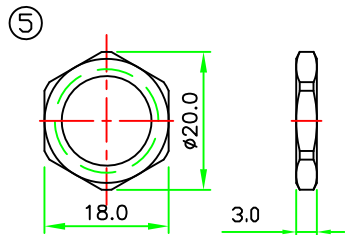
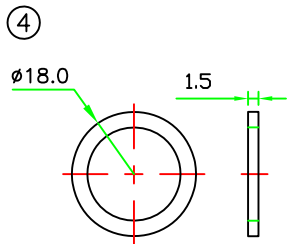


7	O-RING	VITON.	BLACK	1	
6	HOLDER	NYLON+GF.	BLACK	1	
5	HEX NUT	BRASS, Nickel plated.		1	
4	GASKET	RUBBER.	BLACK	1	
3	HOUSING	BRASS, Nickel plated.		1	
2	CONTACT	BRASS, 6 u" Gold Plated. Female Contact.		N	
1	CONNECTOR	M12 A-Coding Female Connector Insert. NYLON+GF.	BLACK	1	
No.	PART NAME	DESCRIPTION	COLOR	Q'TY	REMARKS

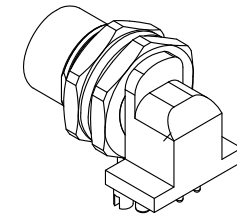
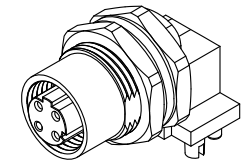
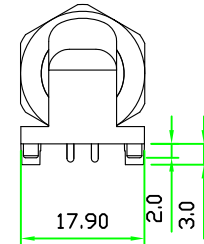
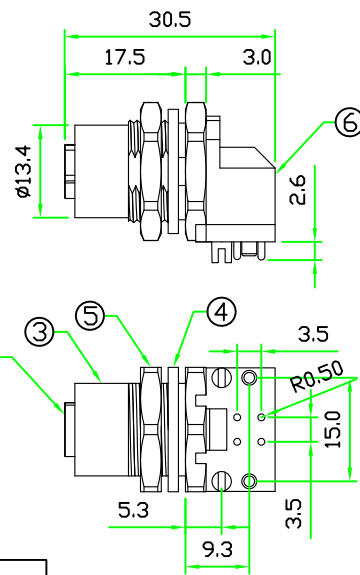
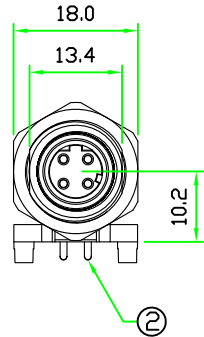
<b>HOLIN® HTP ASIA TECHNOLOGY CO., LTD.</b> 禾凌科技股份有限公司					
		UNIT: mm	TITLE : M12 A-Coding Female Panel Connector Rear Mount Hex Flange R/A PCB Pin		
SCALE		1:1	P/N: A12D-M2xxHPRR		
UNLESS OTHERWISE SPECIFIED TOLERANCES: X ±0.5 XX ±0.25 XXX ±0.1 ANGLE ± 1°		DWG.NO: A12D-M2xxHPRR		DR. Patty	
A		1/1		CH. ERIC	
				AP.	



Recommended  
Panel Cut-Off



REV.	DESCRIPTION	DATE
A	ISSUE	Mar/12/2011
A1	Revised PCB hole dia.	Jan/30/2011
A2	Revised PCB layout.	Aug/28/2012



6	HOLDER	NYLON+GF.	BLACK	1	127-135
5	HEX NUT	BRASS. NICKEL PLATED.		1	M12-P-NUT-R(A)
4	GASKET	EPDM.	BLACK	1	M12-G
3	HOUSING	BRASS, NICKEL PLATED,		1	M12F-RPH -KTA(A3)
2	CONTACT	Brass , 6 u" Gold plated .Female Contact.		4	M12F-1.0PPR12 M12F-1.0PPR34
1	CONNECTOR	M12 D-Coding 4P Female connector insert.	BLACK	1	20-135-N5
No.	PART NAME	DESCRIPTION	COLOR	Q'TY	REMARKS

<b>HOLIN® HTP ASIA TECHNOLOGY CO., LTD.</b> 禾凌科技股份有限公司					
UNIT: mm SCALE 1:1		TITLE : M12 D-Coding FEMALE 4P R/A PCB PIN REAR MOUNT HEX FLANGE PANEL CONNECTOR			
UNLESS OTHERWISE SPECIFIED TOLERANCES: X ±0.25 XX ±0.1 XXX ±0.05 ANGLE ±1°X		P/N: D12D-M204HPRR		DR. <i>MJEKAE</i> CH. <i>NJEK</i>	
REV. A2	SHEET 1/1	DWG.NO: D12D-M204HPRR		AP.	