

The information provided herein is from CONNFLY Electronic Co., Ltd. and is confidential. Any disclosure to a party other than the recipient is prohibited. The intellectual properties and its rights contained herein, including but not limited to, trademarks, patents, copyrights, trade secrets, and technical know-how, are owned exclusively by CONNFLY or its affiliates. Unauthorized use or modification is strictly prohibited. CONNFLY may enforce its intellectual property rights at its own discretion; failures or delays to exercise such rights does not constitute a waiver of such rights.

REV.	DESCRIPTION	DRAWN	CHECKED	APPROVED
A	NEW RELEASE	JLZ 07/26/19'		

**NOTES:**

**1. SPECIFICATIONS**

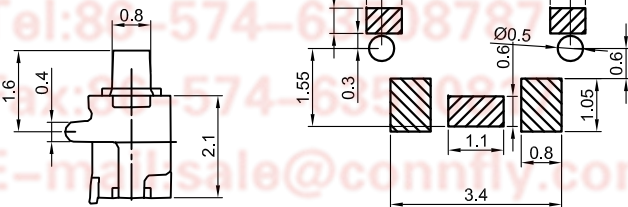
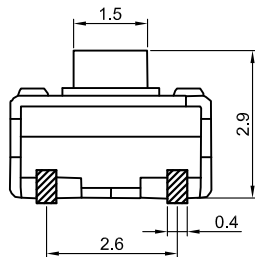
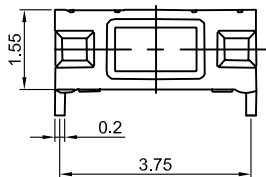
- . Switch Function: Single Pole Single Throw
- . Contact Rating: 50mA at 12Vdc
- . Insulation Resistance:100MΩ min.
- . Contact Resistance:50mΩ max.
- . Operating Life:50,000 cycles
- . Travel:0.13±0.07mm
- . Operation Temperature Range: -30°C to +85°C

- . Wave Soldering: Recommended Solder Temperature At 500°F(260°C)max. 5 Seconds,Subject To PCB 1.6mm Thickness.

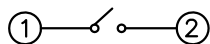
**2. PRODUCT NUMBER CODE:**

DS1042-28 - X X X X X X X

- Operating Life  
05:50,000 cycles
- Operating force  
160: 160±50gf
- Packing type  
A: polybag  
R: tape & reel
- Actuator color  
W: White
- Housing color  
B: Black
- Profile Height(DIM. H)  
029:2.9mm
- No. of contacts  
2: 2P



PCB layout  
Tolerance±0.05



CIRCUIT DIAGRAM

GENERAL TOLERANCE		ANGLE TOLERANCE		PROJECTION		TITLE	TACT SWITCH SMT TYPE 1.55mmX4.0mm				
X.	±0.60	X.	±5°	UNITS	mm	SERIES	DS1042-28 SERIES				
.X	±0.38	.X	±3°	SHEET SIZE	A4						
.XX	±0.25	.XX	±2°								
DRAWING TYPE		CUSTOMER			晨翔电子有限公司 <b>CONNFLY CONNFLY ELECTRONIC CO. LTD</b>						
SCALE		1:1	SHEET							1 OF 1	
DRAWING NO.		C-DS1042-28-XXXXX-A									