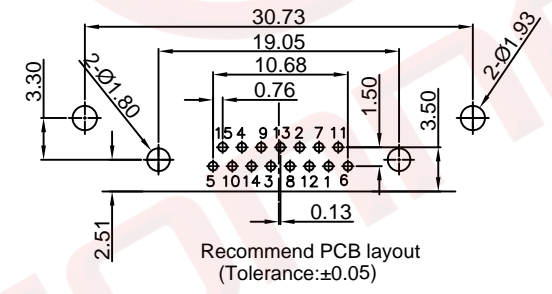
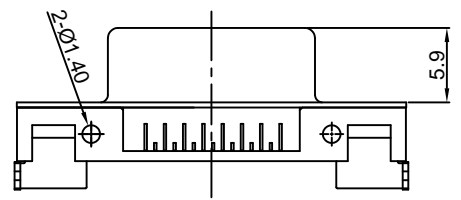
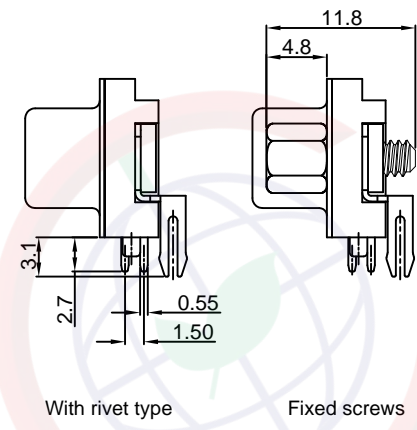
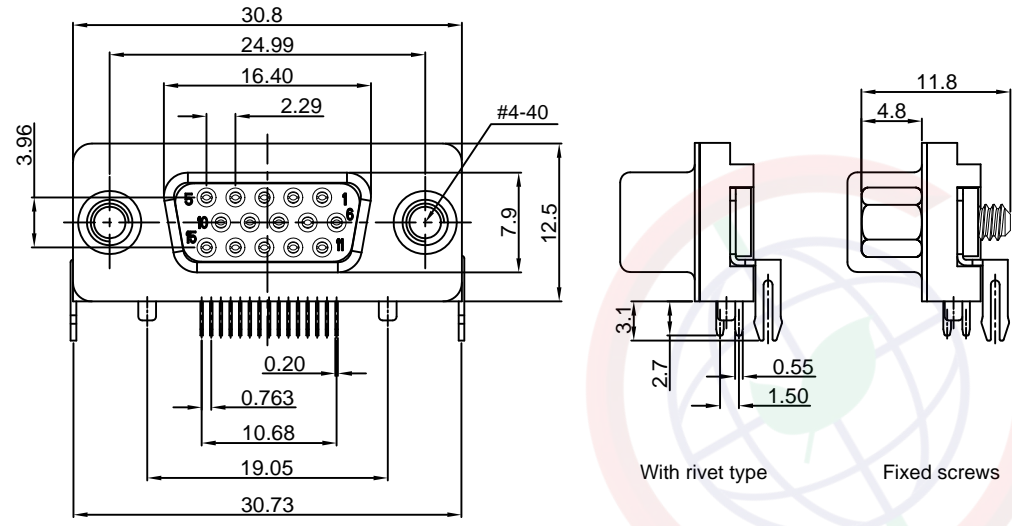


Dept	
Qty	
DC	1
ED	1
IE	1
ISO	1
PD	1
R&D	1
SD	1
QA	1
QC	1
QE	1

REV.	DESCRIPTION	DRAWN	CHECKED	APPROVED
A	NEW RELEASE	YCH 12/15/09'		LJC 12/15/09'
B	DRAWING UPDATE	JLZ 07/25/18'		

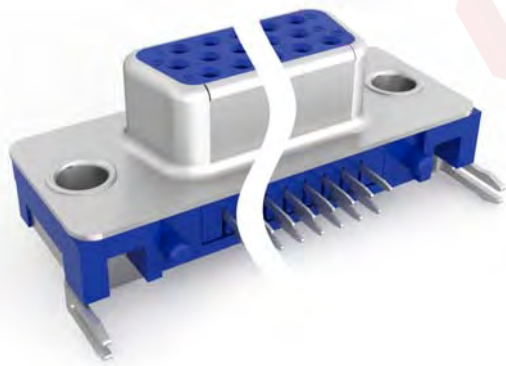
The information provided herein is from CONNELY Electronic Co., Ltd. and is confidential. Any disclosure to a party other than the recipient is prohibited. The intellectual properties and its rights contained herein, including but not limited to, trademarks, patents, copyrights, trade secrets, and technical know-how, are owned exclusively by CONNELY or its affiliates. Unauthorized use or reproduction of any part of this document is strictly prohibited. CONNELY may enforce its intellectual property rights at its own discretion, failures or delays in exercising such rights does not constitute a waiver of such rights.



NOTES:

- Electrical characteristics:
  - Contact resistance: 20mΩ Max. Initial.
  - Dielectric withstanding voltage: 500V AC(rms) for 1 minute.
  - Insulation resistance: 1000MΩ Min.
- Environment characteristics:
  - Temperature range: -40°C~+105°C.
- Materials:
  - Insulator:PBT+Glass fiber
  - Shell:Steel
  - Contact:Copper alloy
- Product number code:  
DS1038-03 - X X X X X X

- X Screw type
- B:With rivet type
- C:Rivet type with fixed screws
- D:Rivet type with screws
- in bulk package
- Contact plating
- 8: Full gold flash
- Si: Selective gold flash
- Shell plating
- N: Nickel
- T: Tin
- Color of housing
- B: Black L: Blue W: White
- Connector type
- F: Female
- No. of contact
- 15



(Series Image-Reference Only)

GENERAL TOLERANCE		ANGLE TOLERANCE	
X.	±0.60	X.	±5°
.X	±0.38	.X	±3°
.XX	±0.25	.XX	±2°
DRAWING TYPE		CUSTOMER	
SCALE		1:1 SHEET 1 OF 1	
DRAWING NO.		C-DS1038-03-XXXXXXX-B	

PROJECTION		TITLE	D-SUB H.D R/A Slim Type	
UNITS	mm	SERIES	DS1038-03 SERIES	
SHEET SIZE	A4			

晨翔电子有限公司  
CONNFLY ELECTRONIC CO. LTD