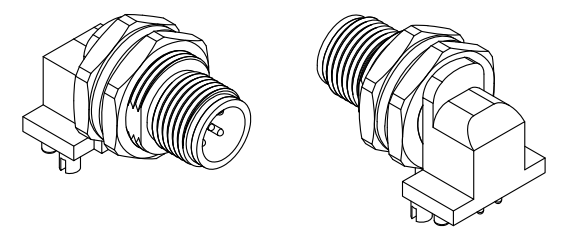
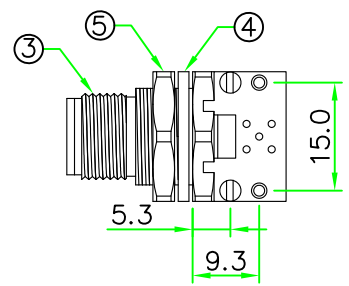
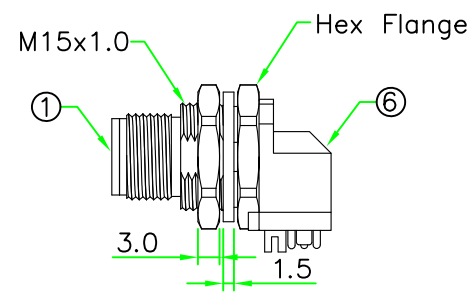
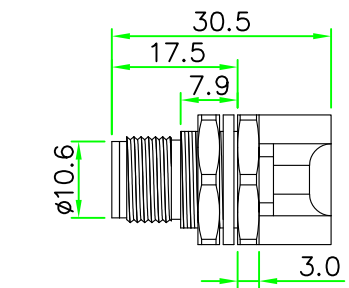
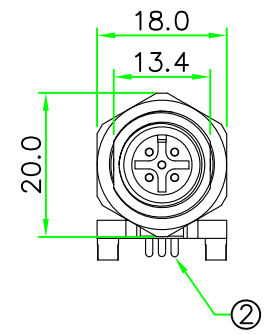
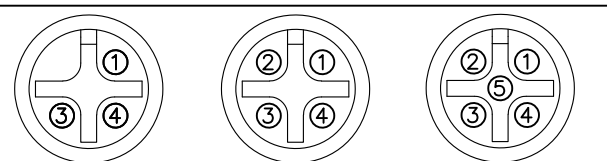
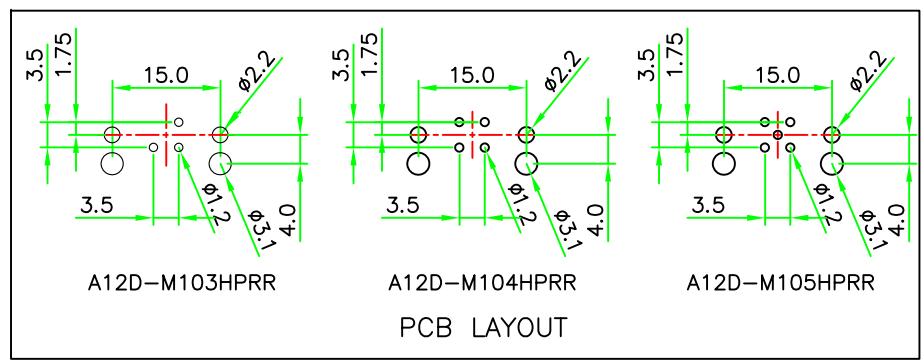
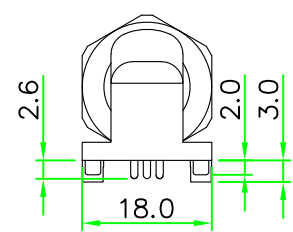


RoHS
IP66~68



- NOTES:
- ELECTRICAL CHARACTERISTICS:
CURRENT RATING: 4A
TEMPERATURE RANGE: -25°C TO +85°C
DIELECTRIC WITHSTANDING VOLTAGE:
500V AC FOR ONE MINUTE
 - HOW TO ORDER: A12D-M1xxHPRR
03 - 3 PINS
04 - 4 PINS
05 - 5 PINS



A12D-M103HPRR A12D-M104HPRR A12D-M105HPRR
PIN ASSIGNMENT FRONT VIEW(前視圖)

6	HOLDER	Nylon+GF.	BLACK	1	
5	HEX NUT	Brass, Nickel Plated.		1	
4	GASKET	Rubber.	BLACK	1	
3	HOUSING	Brass, Nickel Plated.		1	
2	CONTACT	Brass, 6 u" Gold Plated. Male Contact.		N	
1	CONNECTOR	M12 A-Coding Male Connector Insert. Nylon+GF.	BLACK	1	
No.	PART NAME	DESCRIPTION	COLOR	Q'TY	REMARKS

HOLIN® HTP ASIA TECHNOLOGY CO., LTD.
禾凌科技股份有限公司

UNIT: mm TITLE : M12 A-Coding Male Panel Connector Rear Mount Hex Flange R/A PCB Pin

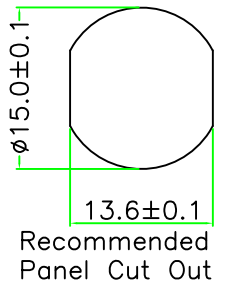
SCALE 1:1

UNLESS OTHERWISE SPECIFIED TOLERANCES:
x ±0.5 xx ±0.25
xxx ±0.1 ANGLE ± 1'

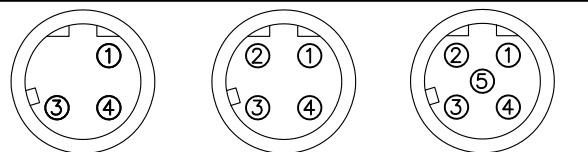
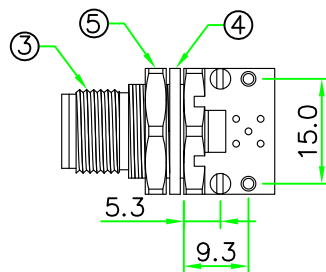
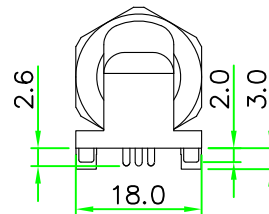
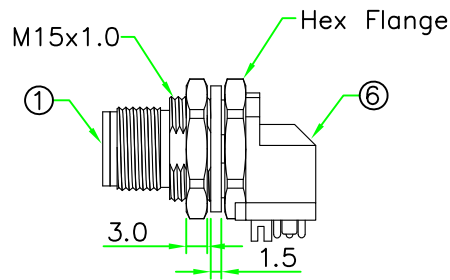
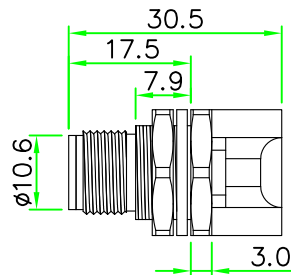
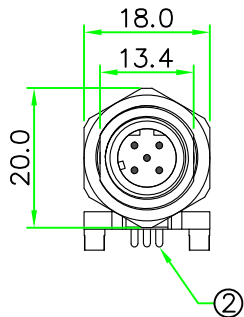
P/N: A12D-M1xxHPRR DR. SIBYL
CH. ERIC

DWG.NO: A12D-M1xxHPRR AP.

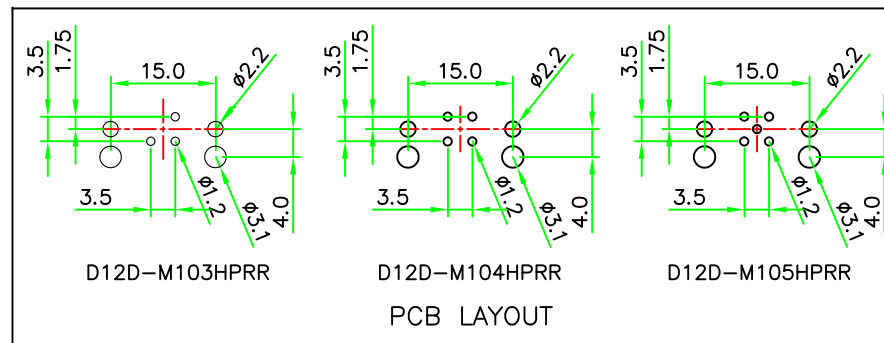
A 1/1



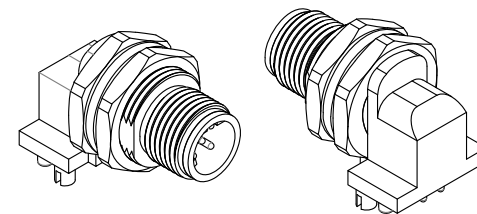
RoHS
IP66~68



D12D-M103HPRR D12D-M104HPRR D12D-M105HPRR
PIN ASSIGNMENT FRONT VIEW(前視圖)



REV.	DESCRIPTION	DATE
A	ISSUE	Feb/23/2019



- NOTES:
- ELECTRICAL CHARACTERISTICS:
CURRENT RATING: 4A
TEMPERATURE RANGE: -25°C TO +85°C
DIELECTRIC WITHSTANDING VOLTAGE:
500V AC FOR ONE MINUTE
 - HOW TO ORDER: D12D-M1xxHPRR
 03 - 3 PINS
 04 - 4 PINS
 05 - 5 PINS

6	HOLDER	Nylon+GF.	BLACK	1	
5	HEX NUT	BRASS, Nickel Plated.		1	
4	GASKET	EPDM.	BLACK	1	
3	HOUSING	BRASS, Nickel Plated.		1	
2	CONTACT	BRASS, 6 u" Gold Plated. Male Contact.		N	
1	CONNECTOR	M12 D-Coding Male Connector Insert. Nylon+GF.	BLACK	1	
No.	PART NAME	DESCRIPTION	COLOR	Q'TY	REMARKS

HOLIN® HTP ASIA TECHNOLOGY CO., LTD.
禾凌科技股份有限公司

UNIT: mm TITLE : M12 D-Coding Male Panel Connector Rear Mount Hex Flange R/A PCB Pin

SCALE 1:1

UNLESS OTHERWISE SPECIFIED TOLERANCES:
x ±0.5 xx ±0.25
xxx ±0.1 ANGLE ± 1'

P/N: D12D-M1xxHPRR DR. James
CH. ERIC

DWG.NO: D12D-M1xxHPRR AP.

A 1/1