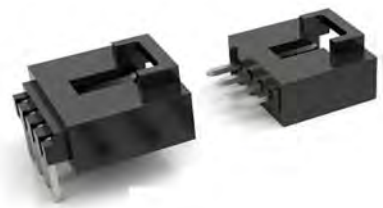
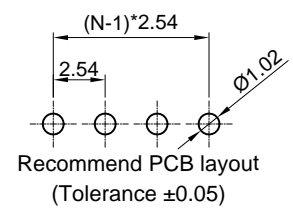
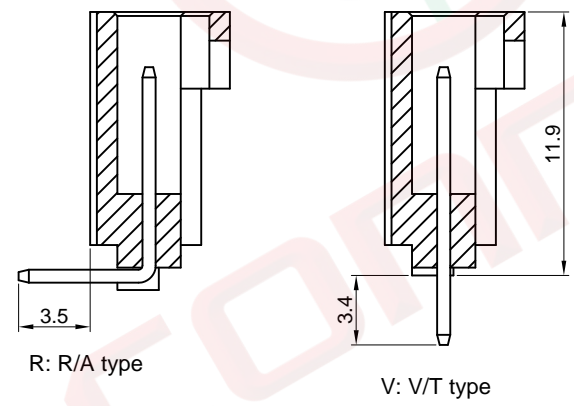
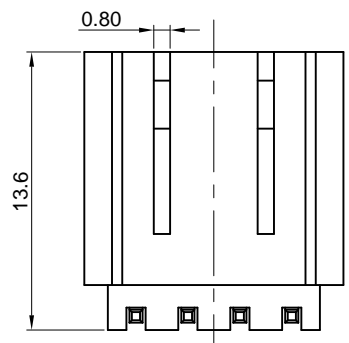
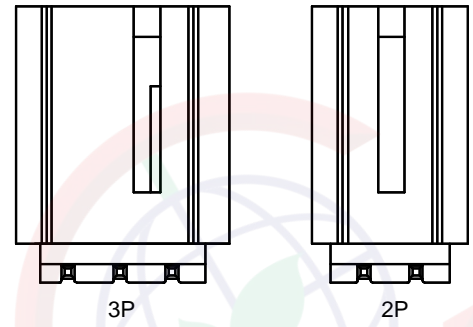
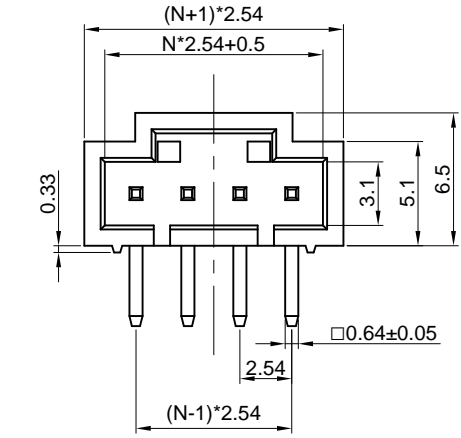


Dept	
Qty	
DC	1
ED	1
IE	1
ISO	1
PD	1
R&D	1
SD	1
QA	1
QC	1
QF	1

The information provided herein is from CONNELY Electronic Co., Ltd. and is confidential. Any disclosure to a party other than the recipient is prohibited. The intellectual properties and its rights contained herein, including but not limited to, trademarks, patents, copyrights, trade secrets, and technical know-how, are owned exclusively by CONNELY or its affiliates. Unauthorized use or reproduction of any part of this document is strictly prohibited. CONNELY may enforce its intellectual property rights at its own discretion, failures or delays to exercise such rights does not constitute a waiver of such rights.

N=No.of contact



(Series Image-Reference Only)

REV.	DESCRIPTION	DRAWN	CHECKED	APPROVED
A	NEW RELEASE	JLZ 03/15/16'	HZW 03/15/16'	LJC 03/15/16'
B	DRAWING UPDATE	JLZ 12/24/20'		

- Notes:
- Specifications:
- Contact Resistance: 20mΩ Max.
  - Insulation Resistance: 1000MΩ Min.
  - Dielectric Withstanding Voltage: 600V AC(rms) For 1 Minute.
  - Current Rating:3A.
  - Voltage Rating:150V AC rms.
  - Temperature: -40°C~+105°C.
- Materials:
- Contact Material: Copper Alloy.
  - Contact Plating: Tin Plating Over Nickel.
  - Insulator Materials: PBT,Black,UL94-V0.
- Product Number Code:
- DS1070-06 - X X X X X
- Housing Color  
B: Black
  - Contact Plating  
6: Tin  
8: Gold flash
  - Mounting type  
R: R/A type  
V: V/T type
  - Connector type  
M: Male
  - No.of contact  
2 to 18

GENERAL TOLERANCE		ANGLE TOLERANCE	
X.	±0.60	X.	±5°
.X	±0.38	.X	±3°
.XX	±0.25	.XX	±2°

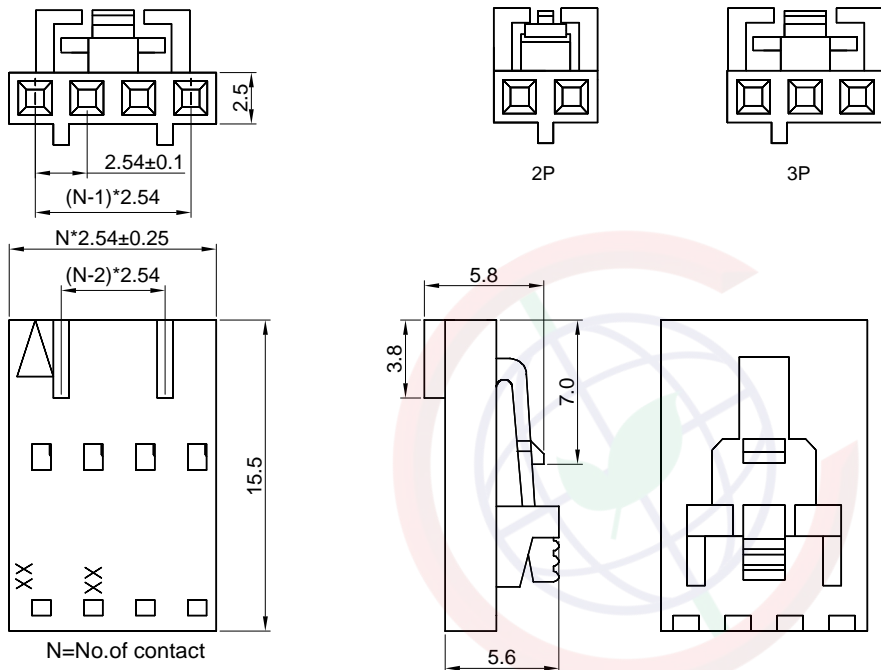
DRAWING TYPE	CUSTOMER		
SCALE	1:1	SHEET	1 OF 2
DRAWING NO.	C-DS1070-06-XXXXXX-B		

PROJECTION		TITLE	2.54mm Wafer R/A & V/T Type	
UNITS	mm	SERIES	DS1070-06 SERIES	
SHEET SIZE	A4			

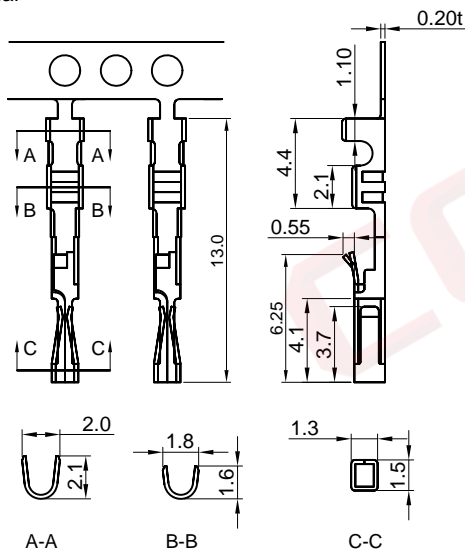
晨翔电子有限公司  
CONNFLY CONNELY ELECTRONIC CO. LTD

The information provided herein is from CONNELY Electronic Co., Ltd. and is confidential. Any disclosure to a party other than the recipient is prohibited. The intellectual properties and its rights contained herein, including but not limited to, trademarks, patents, copyrights, trade secrets, and technical know-how, are owned exclusively by CONNELY or its affiliates. Unauthorized use or reproduction of any part of this document is strictly prohibited. CONNELY may enforce its intellectual property rights at its own discretion, failures or delays to exercise such rights does not constitute a waiver of such rights.

### Housing



### Terminal



(Series Image-Reference Only)

REV.	DESCRIPTION	DRAWN	CHECKED	APPROVED
A	NEW RELEASE	JLZ 03/15/16'	HZW 03/15/16'	LJC 03/15/16'
B	DRAWING UPDATE	JLZ 12/24/20'		

#### Notes:

##### Specifications:

1. Contact Resistance: 20mΩ Max.
2. Insulation Resistance: 1000MΩ Min.
3. Dielectric Withstanding Voltage: 600V AC(rms) For 1 Minute.
4. Current Rating:3A.
5. Voltage Rating:150V AC rms.
6. Temperature: -25°C~+85°C.

##### Materials:

1. Contact Material: Copper Alloy.
2. Contact Plating: Tin Plating Over Nickel.
3. Insulator Materials: Nylon,Black,UL94-V0.

##### Product Number Code:

##### Housing:

I - DS1070-06 - S C B 0 X

Poles Of Housing  
02~20

Housing Color  
B: Black

##### Terminal:

T - DS1070-06 - S C 6 0 0

Contact Plating  
6: Tin

GENERAL TOLERANCE		ANGLE TOLERANCE		PROJECTION	TITLE
X.	±0.60	X.	±5°	mm	2.54mm Housing & Terminal
.X	±0.38	.X	±3°	A4	SERIES DS1070-06 SERIES
.XX	±0.25	.XX	±2°		
DRAWING TYPE		CUSTOMER		<b>晨翔电子有限公司</b> <b>CONNFLY CONNELY ELECTRONIC CO. LTD</b>	
SCALE		1:1			
DRAWING NO.		C-DS1070-06-XXXXXX-B			