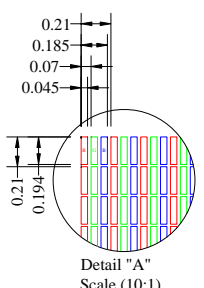
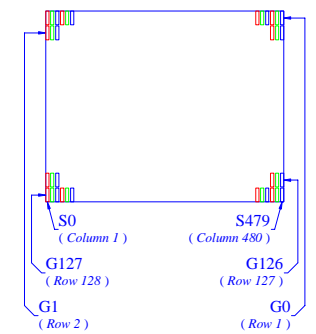
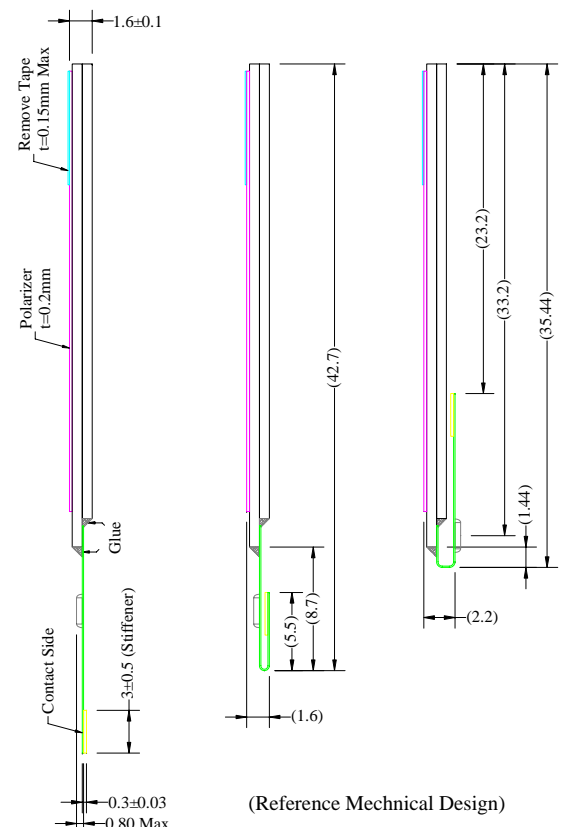
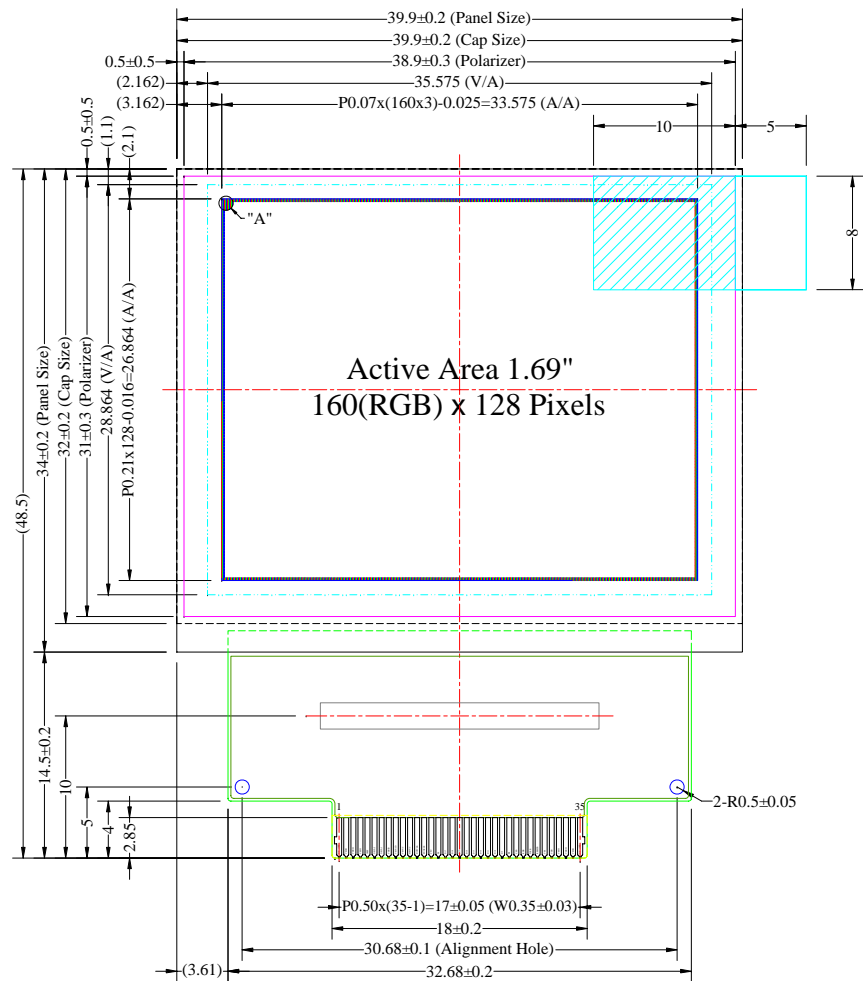


Item	Date	Remark
A	20091110	Original Drawing
B	20120427	Remove Single-side Tape



Pin	Symbol
1	N.C. (GND)
2	VSDH
3	VDDH
4	VSSH
5	IREF
6	OSCA2
7	OSCA1
8	VDDIO
9	VSYNCO
10	VSYNC
11	HSYNC
12	DOTCLK
13	ENABLE
14	CPU
15	PS
16	D17
17	D16
18	D15
19	D14
20	D13
21	D12
22	D11
23	D10
24	D9
25	RS
26	CSB
27	RDB
28	WRB
29	RESETB
30	VSS
31	VDD
32	VSSH
33	VDDH
34	VSDH
35	N.C. (GND)

**Notes:**

1. Driver IC: SEPS525
2. Die Size: 19660um x 1850um
3. COF Number: SEPS525F00 / UT-0825-F01
4. Interface: 8-/9-bit 68XX/80XX Parallel, 4-wire SPI, 6-bit RGB I/F
5. General Tolerance:  $\pm 0.30$
6. The total thickness (1.70 Max) is without polarizer protective film & remove tape. The actual assembled total thickness with above materials should be 1.95 Max

Customer Approval Signature	<b>WiseChip Semiconductor Inc.</b>							Drawing Number	Rev.
	UG-6028GDEBF02 Folding Type OEL Display Module Pixel Number: 160(RGB) x 128, 262144 Colors, COF Package							DFE6028CNCNF13	B
							Material		
							Soda Lime / Polyimide		
Unless Otherwise Specified		Title					Scale	Sheet	Size
Unit	mm		Drawn	E.E.	Panel / E.	P.M.			
General Roughness	$\text{⌀}$	By	Dora Yang	Sean Lai	Ivy Lo	Cherry Lin	1:1	1 of 1	A3
Tolerance		Date	20120427	20120427	20120427	20120427			
Dimension	$\pm 0.3$								
Angle	$\pm 1$								