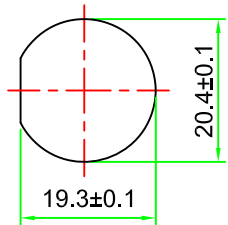


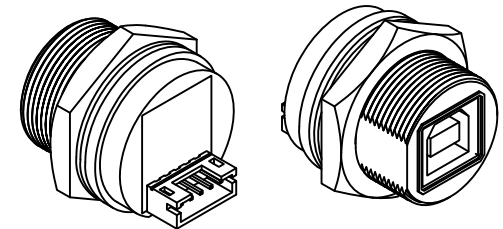
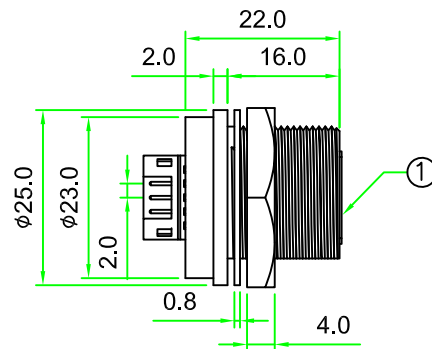
REV.	DESCRIPTION	DATE
A	ISSUE	Nov/15/2019



RECOMMENDED  
PANEL CUT OUT

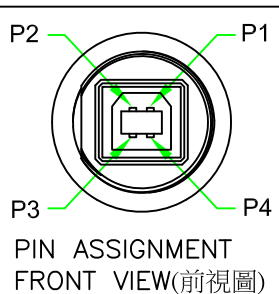
RoHS

IP66~68

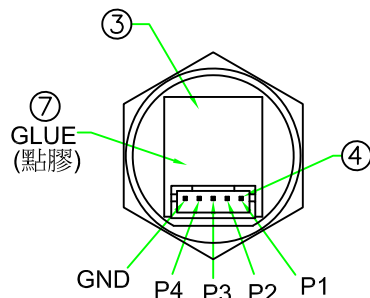


NOTES:

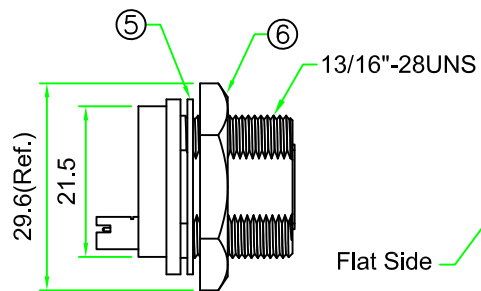
1. Current Rating: 1A
2. Connector Temperature Range: -25°C to 85°C
3. Contact Resistance: ≤30mΩ
4. Insulation Resistance: ≥100MΩ
5. Breakdown Voltage: ≥AC 500V/1 Minute
6. Panel Thickness Max. 4.0 mm



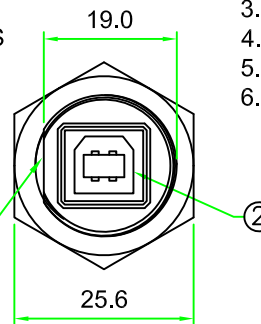
PIN ASSIGNMENT  
FRONT VIEW(前視圖)



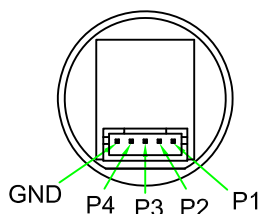
REAR VIEW  
(後視圖)



Flat Side



FRONT VIEW  
(前視圖)



PIN ASSIGNMENT  
REAR VIEW(後視圖)

7	GLUE	EPOXY.	BLACK		
6	HEX NUT	NYLON+GF.	BLACK	1	
5	GASKET	EPDM.	BLACK	1	
4	WAFER	PITCH 2.0mm, Straight Angle. 5P*1ROW.		1	
3	PCB	FR4 . Double Side, 1.0mm Thickness.		1	
2	CONNECTOR	USB B Type Female Connector.		1	
1	BODY	USB B Type Lock Type Female Connector Insert. NYLON+GF.	BLACK	1	
No.	PART NAME	DESCRIPTION	COLOR	Q'TY	REMARKS

**HOLIN®** HTP ASIA TECHNOLOGY CO., LTD.  
禾凌科技股份有限公司

	UNIT: mm	TITLE:	USB 2.0 B Type Female C Size Lock Type Circular Flange Panel 5 Pin Straight Angle Wafer
SCALE	1:1	P/N:	USB2BC-P3C03
UNLESS OTHERWISE SPECIFIED TOLERANCES: .X ±1.0 .XX ± 0.5 .XXX± 0.25 ANGLE± 1°		DR.	SIBYL
REV.	SHEET	CH.	JAMES
A	1/1	DWG.NO:	USB2BC-P3C03
		AP.	