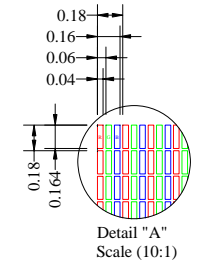
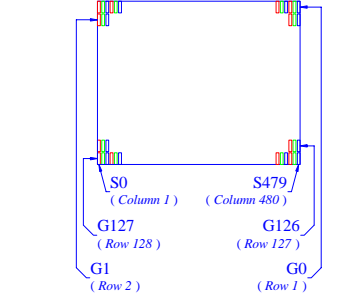
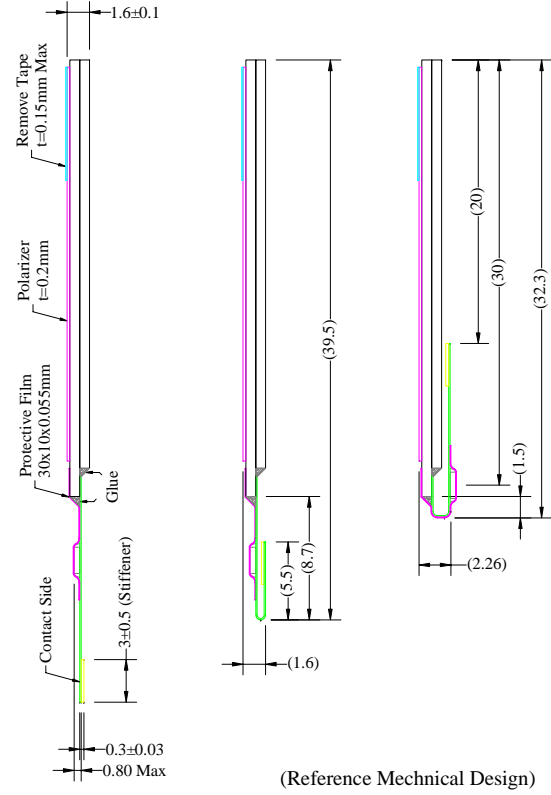
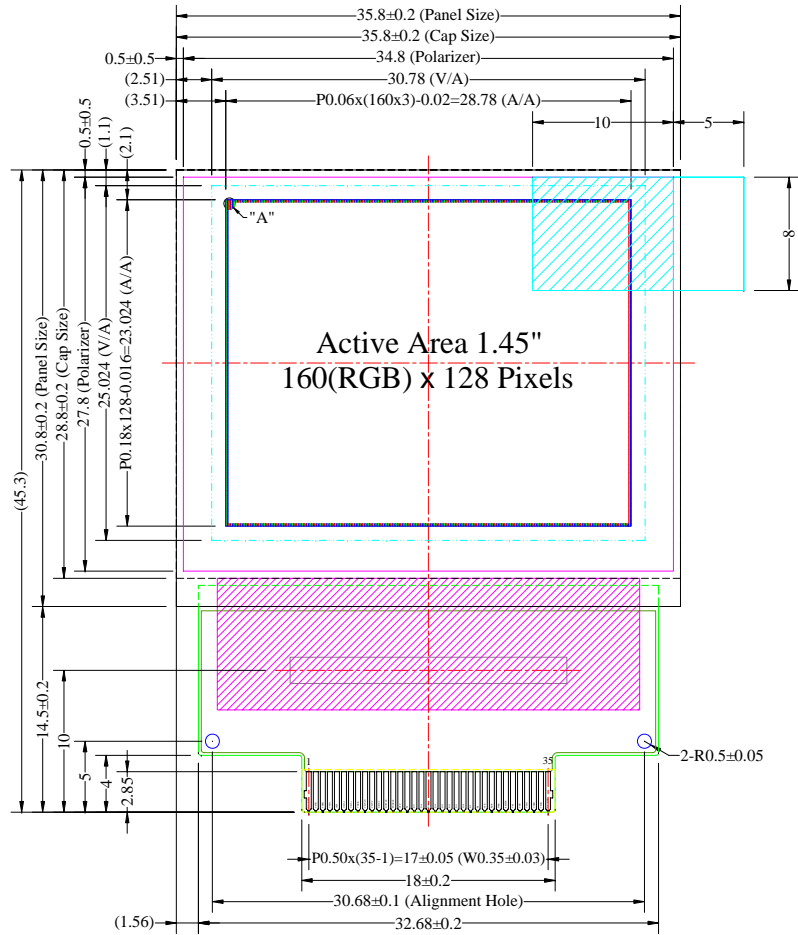


Item	Date	Remark
A	20060320	Original Drawing
B	20061129	Modify Interface Notes
C	20080609	Update Applicable COF Number & Pin Definition



Pin	Symbol
1	N.C. (GND)
2	VSDH
3	VDDH
4	VSSH
5	IREF
6	OSCA2
7	OSCA1
8	VDDIO
9	VSYNCO
10	VSYNC
11	HSYNC
12	DOTCLK
13	ENABLE
14	CPU
15	PS
16	D17
17	D16
18	D15
19	D14
20	D13
21	D12
22	D11
23	D10
24	D9
25	RS
26	CSB
27	RDB
28	WRB
29	RESETB
30	VSS
31	VDD
32	VSSH
33	VDDH
34	VSDH
35	N.C. (GND)

Notes:

1. Driver IC: SEPS525
2. Die Size: 19660um x 1850um
3. COF Number: SEPS525F00 / UT-0825-F01
4. Interface:
8-/9-bit 80XX Parallel, 4-wire SPI, 6-bit RGB I/F
5. General Tolerance: ±0.30
6. The total thickness (1.70 Max) is without polarizer protective film & remove tape.
The actual assembled total thickness with above materials should be 1.95 Max

Customer Approval Signature	Univision Technology Inc.						Drawing Number	Rev.		
								DFE6028CNCNF06	C	
	Title: UG-6028GDEAF01 Folding Type OEL Display Module Pixel Number: 160(RGB) x 128, 262144 Colors, COF Package						Material: Soda Lime / Polyimide			
	Unless Otherwise Specified		Drawn		E.E.		Panel / E.		P.M.	
	Unit	mm	By: Humphrey Lin		Sean Lai		Ivy Lo		Sean Lin	
	General Roughness		Date: 20080609		20080609		20080609		20080609	
	Tolerance		Scale: 1:1		Sheet: 1 of 1		Size: A3			
	Dimension	±0.3								
	Angle	±1								