

| | |
|------|---|
| Dept | |
| Qty | |
| DC | 1 |
| ED | 1 |
| IE | 1 |
| ISO | 1 |
| PD | 1 |
| R&D | 1 |
| SD | 1 |
| QA | 1 |
| QC | 1 |
| QE | 1 |

| REV. | DESCRIPTION | DRAWN | CHECKED | APPROVED |
|------|-------------|---------------|---------|----------|
| A | NEW RELEASE | JLZ 03/20/19' | | |
| | | | | |
| | | | | |

NOTES:

1. SPECIFICATIONS

- . Contact Rating: 50mA at 12Vdc
- . Insulation Resistance:100MΩ min.
- . Contact Resistance:50mΩ max.
- . Dielectric Withstanding Voltage: 250V AC(rms) for 1 minute.
- . Operating Life:80,000 cycles
- . Travel:0.25±0.1mm
- . Operation Temperature Range: -25°C to +70°C

- . Wave Soldering: Recommended Solder Temperature At 500°f(260°C)max. 5 Seconds
- . Hand Soldering: Use Soldering Iron Of 30 Watts,Controlled At 608°f(320°C)Approximately 2 Seconds.

2. PRODUCT NUMBER CODE:

DS1041-22 - X X X X X X X

Operating Life
08: 80,000 cycles
10: 100,000 cycles

Operating force
160: 160±50gf
250: 250±50gf

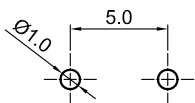
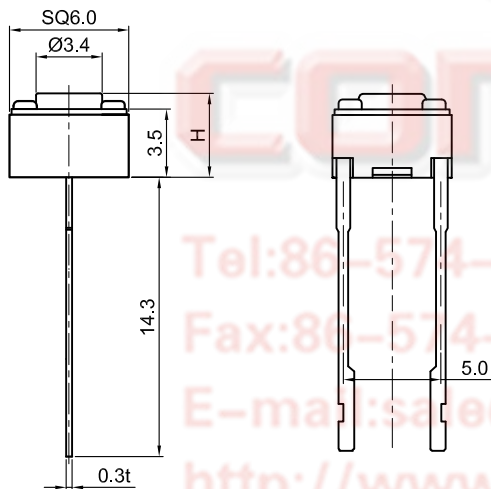
Packing type
A: polybag

Actuator color
K: Black

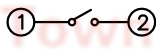
Housing color
K: Black

Profile Height(Dim H)
043:4.3mm
050:5.0mm
095:9.5mm

No. of contacts
2: 2 pos



Recommend PCB layout
Tolerance±0.05



Circuit

Tel:86-574-63508787
Fax:86-574-63510817
E-mail:sale@connfly.com
http://www.connfly.com
Add:East industry Zone KuangYan
Town Cixi Ningbo China
P.C:315333

| GENERAL TOLERANCE | | ANGLE TOLERANCE | |
|-------------------|-------|-----------------|-----|
| X. | ±0.60 | X. | ±5° |
| .X | ±0.38 | .X | ±3° |
| .XX | ±0.25 | .XX | ±2° |

| | | | |
|------------|----|------------|--------------------------------|
| PROJECTION | | TITLE | 6.0*6.0mm Tact Switch Dip Type |
| UNITS | mm | SHEET SIZE | A4 |
| SHEET SIZE | A4 | SERIES | DS1041-22 SERIES |

| | | | |
|--------------|-----------------------|-------|--------|
| DRAWING TYPE | CUSTOMER | | |
| SCALE | 1:1 | SHEET | 1 OF 1 |
| DRAWING NO. | C-DS1041-22-XXXXXXX-A | | |

晨翔电子有限公司
CONNFLY CONNFLY ELECTRONIC CO. LTD

The information provided herein is from CONNFLY Electronic Co., Ltd. and is confidential. Any disclosure to a party other than the recipient is prohibited. The intellectual properties and its rights contained herein, including but not limited to, trademarks, patents, copyrights, trade secrets, and technical know-how, are owned exclusively by CONNFLY or its affiliates. Unauthorized use or modification is strictly prohibited. CONNFLY may enforce its intellectual property rights at its own discretion; failures or delays to exercise such rights does not constitute a waiver of such rights.