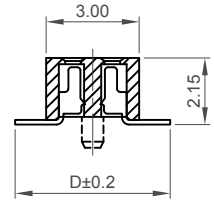
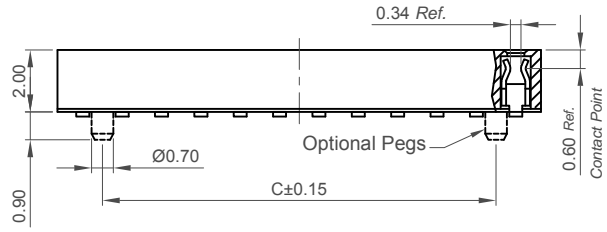
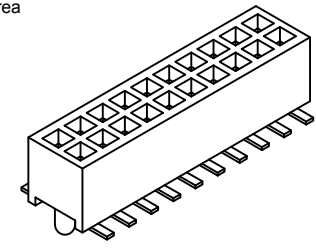


For Top Entry

For Bottom Entry

Recommended PCB Layouts

▨ Solder Area



Number of Contacts	Dimensions		
	A	B	C
4	1.27	2.78	/
6	2.54	4.05	1.27
8	3.81	5.32	2.54
10	5.08	6.59	3.81
12	6.35	7.86	5.08
14	7.62	9.13	6.35
16	8.89	10.40	7.62
18	10.16	11.67	8.89
20	11.43	12.94	10.16
22	12.70	14.21	11.43
24	13.97	15.48	12.70
26	15.24	16.75	13.97
28	16.51	18.02	15.24
30	17.78	19.29	16.51
32	19.05	20.56	17.78
34	20.32	21.83	19.05
36	21.59	23.10	20.32
38	22.86	24.37	21.59
40	24.13	25.64	22.86
42	25.40	26.91	24.13
44	26.67	28.18	25.40
46	27.94	29.45	26.67
48	29.21	30.72	27.94
50	30.48	31.99	29.21
52	31.75	33.26	30.48
54	33.02	34.53	31.75
56	34.29	35.80	33.02
58	35.56	37.07	34.29
60	36.83	38.34	35.56
62	38.10	39.61	36.83
64	39.37	40.88	38.10
66	40.64	42.15	39.37
68	41.91	43.42	40.64
70	43.18	44.69	41.91
72	44.45	45.96	43.18
74	45.72	47.23	44.45
76	46.99	48.50	45.72
78	48.26	49.77	46.99
80	49.53	51.04	48.26

Specifications

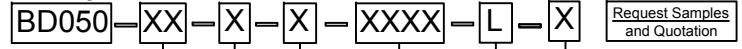
Material
 Insulator Material: LCP, UL 94V-0
 Contact Terminal: Phosphor Bronze

Plating
 See Ordering Grid

Electrical
 Current Rating: 1A per pin
 Contact Resistance: 20 mΩ max.
 Insulating Resistance: 1000 MΩ min.
 Dielectric Withstand Voltage: 500V AC

Mechanical & Environmental
 Operating Temperature: -40°C to +105°C
 Soldering Process:
 IR Reflow: 260°C for 10 sec.
 Manual Solder: 350°C for 3-5 sec

Ordering Grid



No. of Contacts
 04 to 80

Contact Plating
A = Gold Flash All Over (Standard)
 C = Tin All Over

Locating Peg
 0 = Without
 1 = With

Packing Options
B = Tape & Reel with Cap (Standard)
 C = Tape & Reel with Film
 D = Tube
 E = Tube with Cap
 F = Tube with Film
 Insulator Material
 L = LCP

Dimension D (1/100mm) (Footprint Width)
0500 = 5.00mm (Standard)
 0450 = 4.50mm

Mates with (Subject to pin length)
 BD025 BD030 BD035
 BD038 BD040 BD095

For bottom entry applications, stringent soldering control & pin alignment are required as lead to pad misalignment could cause incorrect mating.

Part Number BD050		Product Description 1.27mm Pitch Socket Dual Row, Surface Mount, Low Profile, Dual Entry	
Drawing Date 28th December 2007			
By	CC	Tolerances (Except as Noted)	Units: Metric (mm)
Detail	BD050 J PCN	Length X. ± 0.30 X.X ± 0.20 X.XX ± 0.15 X.XXX ± 0.10	Angle X° ± 5° X.X° ± 2° X.XX° ± 1° X.XXX° ± 0.5°
Revision	J3		3rd Angle Projection
Date	06/03/20		



This drawing is confidential and copyright of Global Connector Technology, Ltd (GCT). This drawing must not be copied or disclosed without written consent. E & OE



Not to Scale	Drawn By PKN	Sheet No. 1/1
--------------	-----------------	------------------